

598

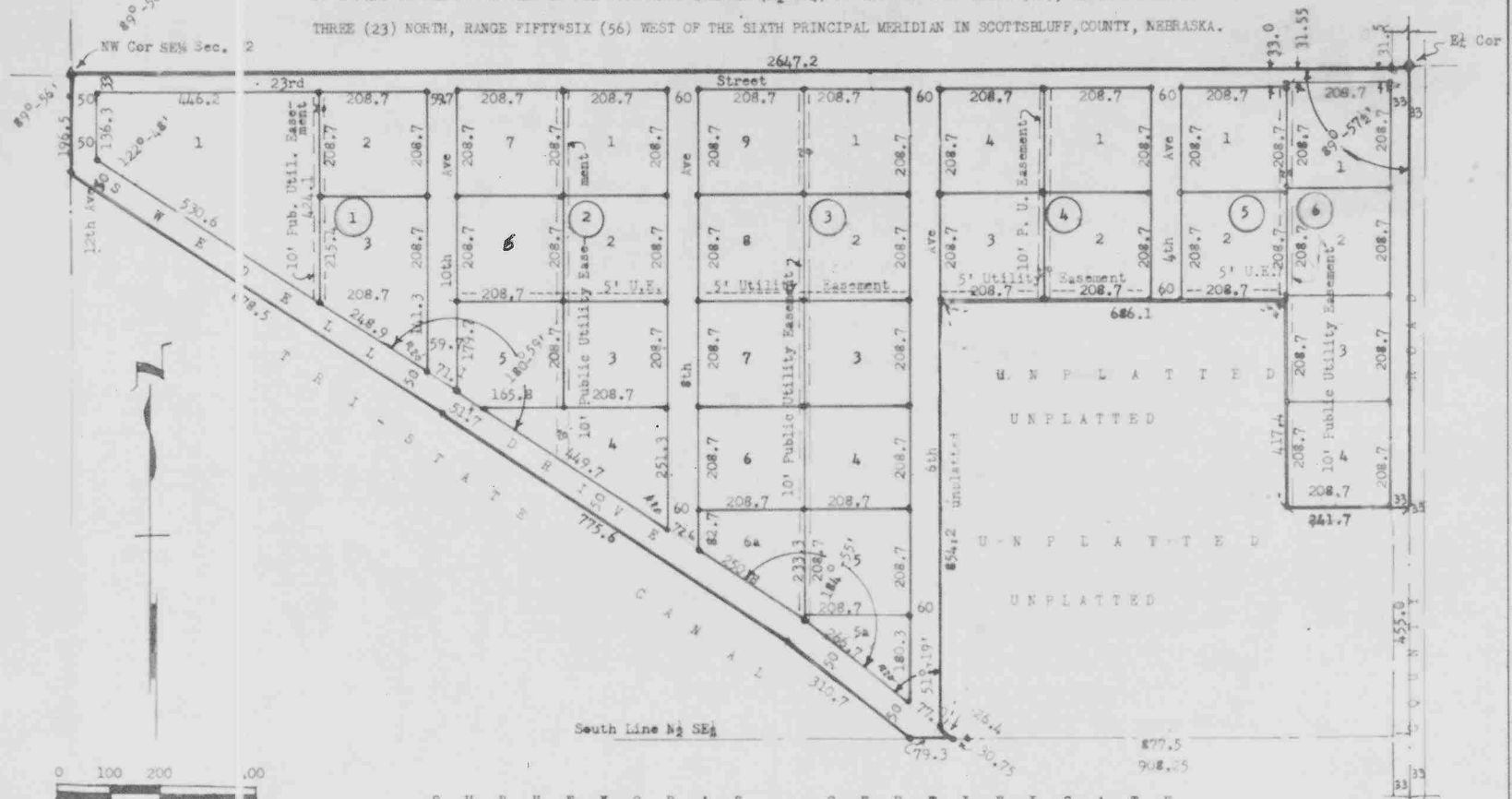
Note: Subd & Replat Lot 1, Blk 4 Book 161, Pg 579

2.

1973

SWEDELL SUBDIVISION

OF A PART OF THE NORTH-HALF OF THE SOUTHEAST QUARTER (N $\frac{1}{2}$ SE $\frac{1}{4}$) OF SECTION TWENTY-TWO (22), TOWNSHIP TWENTY-THREE (23) NORTH, RANGE FIFTY-SIX (56) WEST OF THE SIXTH PRINCIPAL MERIDIAN IN SCOTTSBLUFF COUNTY, NEBRASKA.



SURVEYOR'S CERTIFICATE

I, Kenneth George Roberts, a competent surveyor of Scotts Bluff County, Nebraska, do hereby certify that on the 30th day of May 1970, I completed a survey of that part of the North-half of the Southeast Quarter (N $\frac{1}{2}$ SE $\frac{1}{4}$) of Section Twenty-two (22), Township Twenty-three (23) North, Range Fifty-six (56) West of the Sixth Principal Meridian in Scotts Bluff County, Nebraska lying North of the Tri-State Canal, also known as the Farmer's Irrigation Canal; EXCEPT the following described irregular tract of land: With reference to a point on the Northeast Corner of such SE $\frac{1}{4}$; thence South on the East line of such SE $\frac{1}{4}$, a distance of 866.3 feet to the point of BEGINNING; thence West and parallel with the North line of such SE $\frac{1}{4}$, a distance of 241.4 feet; thence North and parallel with the East line of such SE $\frac{1}{4}$, a distance of 417.4 feet; thence West and parallel with the North line of such SE $\frac{1}{4}$, a distance of 686.1 feet; thence South and parallel with the East line of such SE $\frac{1}{4}$, a distance of 854.2 feet; thence angle left 51 degrees and 19 minutes, a distance of 26.4 feet in a Southeasterly direction to intersect the South line of the aforementioned N $\frac{1}{2}$ SE $\frac{1}{4}$; thence East on such South line a distance of 908.25 feet to the East line of such SE $\frac{1}{4}$; thence North on such East line, a distance of 455.0 feet to the point of BEGINNING. Such subdivision containing 40.4 acres more or less.

That the accompanying plat is a correct delineation of such survey drawn to a scale of 200 feet to one inch with all dimensions shown thereon in feet and decimals. That such plat is named "SWEDELL SUBDIVISION". That each tract and block bears its own number. That 5/8" X 36" Iron rods are driven well into the ground at each tract and block corner. That the boundary of the subdivision is shown on such plat in a continuous heavy solid line.

WITNESS MY HAND AND SEAL this 10th day of June 1970.



Kenneth George Roberts
 Kenneth George Roberts, Scottsbluff, Nebraska
 Nebraska Registered Land Surveyor L.S. 33

We, the undersigned, owners of realstate situated on that part of the N 1/2 SE 1/4 of Section 22 T23N R56W of the 6th P.M. lying North of the Tri-State Canal in Scotts Bluff County, Nebraska, as more particularly described on the accompanying plat and Surveyor's Certificate, have caused such realstate to be surveyed and platted as "SWEDELL SUBDIVISION" in Scotts Bluff County, Nebraska. The foregoing subdivision of realstate and the streets, avenues and public utility easements as appear on the accompanying plat is made with the free consent and in accordance with the desires of the undersigned owners. We hereby dedicate the streets, avenues and public utility easements designated upon and referred to in the accompanying plat to the use and benefit of the public;

Dated this 13 day of July 1970.

Clarence W. Swedell
Clarence W, Swedell

Earl D. Rowlee
Earl D. Rowlee

Joyce JoAnn Rowlee
Joyce JoAnn Rowlee

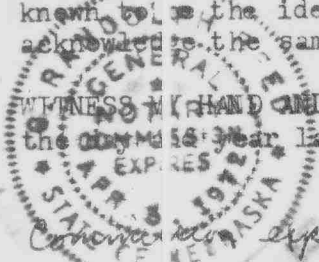
A C K N O W L E D G E M E N T

STATE OF NEBRASKA)
) ss.
SCOTTS BLUFF COUNTY)

On this 13 day of July 1970, before me a Notary Public, in and for said County personally came Clarence W. Swedell, a single person; and Earl D. Rowlee and Joyce JoAnn Rowlee, hisband and wife, to me personally known to be the identical persons, whose names are affixed to the above dedication and acknowledge the same to be their voluntary acts and deeds.

WITNESS MY HAND AND SEAL
the day last above written.

G. Randolph Reef
NOTARY PUBLIC

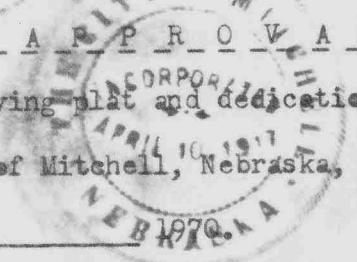


A P P R O V A L & A C C E P T A N C E

The accompanying plat and dedication approved and accepted by the Mayor & City Council of the City of Mitchell, Nebraska, by resolution duly passed this 13 day of

July

KE Mitchell
MAYOR



1973

NUMERICAL
GENERAL
TAX REG.
PICTURED

STATE OF NEBRASKA }
SCOTTS BLUFF COUNTY }

Entered on Numerical Index and filed for

record the 14 day of July

1970, at 2:21 o'clock P.M., and

recorded in Book 132 of

Records on Page 598

REGISTER OF DEEDS

By Deputy

May Jo Latta