

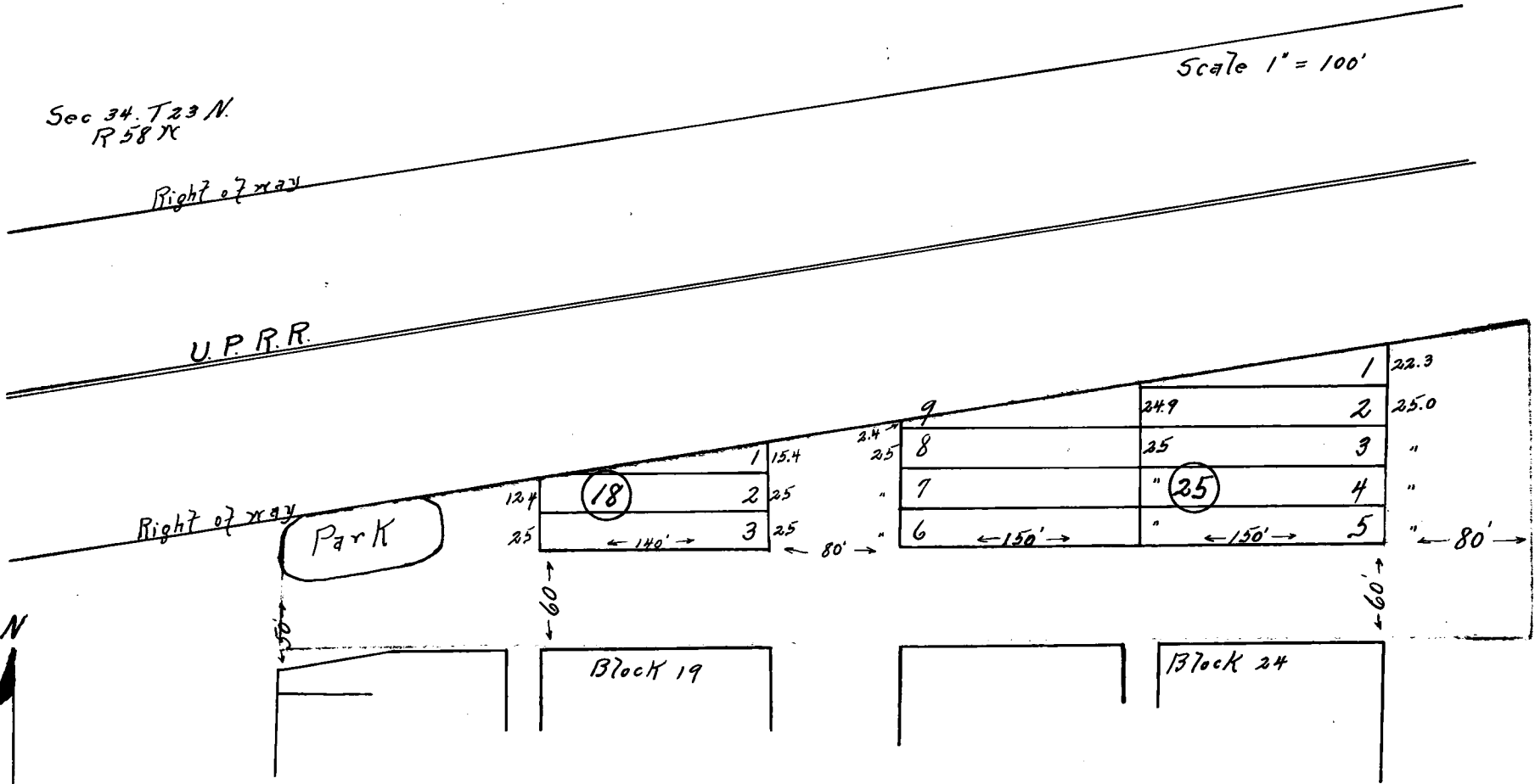
*See vacation of pt
of street Misc 11-265*

DEED RECORD, No. 13

Security Land Company
to
The Public

STATE OF NEBRASKA, Scotts Bluff County, ss.
Entered on Numerical Index and filed for record
the 23 day of January 1922, at 4 o'clock P.M.
and recorded in Book 13 of Deeds on Page 310.
R. G. Neeley, Register of Deeds.

SECOND ADDITION
to the
TOWN of LYMAN
NEBRASKA
Adding Blocks 18 and 25



CERTIFICATE OF SURVEYOR.

State of Nebraska)
County of Scotts Bluff) ss.

I, the undersigned, do hereby certify that on the 14th day of January 1922, I surveyed the second addition to the town of Lyman in Scotts Bluff County, Nebraska; according to the plat hereof; and the same was divided into blocks, lots and streets as hereon shown; that the dimensions of all blocks, lots and streets are as on said plat shown.

That the north west and the south west corners of Government section 34, T 23 N, R 58 W of the Sixth P. M. are plainly marked, each with a concrete post, set firmly in the ground, the tops being even with the surface of the ground.

A right line connecting the above named corners, which is namely, the west line of Sec., 34, and the dividing line between sections 34 and 33, is taken as the base line for this survey and plat, all blocks being at right angles thereto.

All lots and blocks surveyed by me are marked with pine stakes driven in the ground at the corners thereof.

From the S.W. corner Sec. 34 north 1260' thence east 1990' to S. W. corner block 25.

In witness whereof I have hereunto set my hand this 19th, day of January in the year 1922.

Louis S. Hubbs
Surveyor.