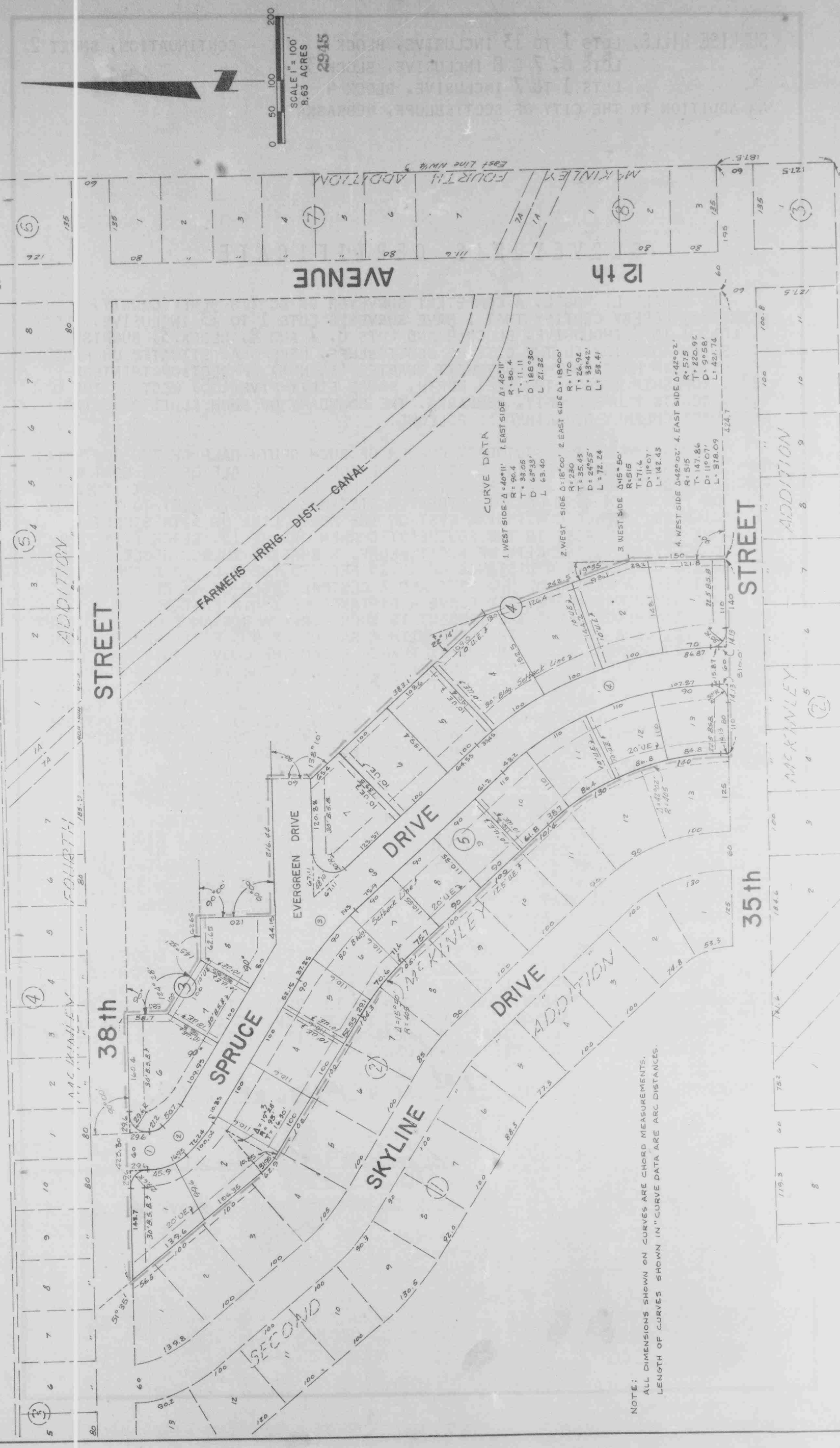


**SUNIRISIA HILLS**  
 LOTS 1 TO 13 INC. BLOCK 5, LOTS 6 TO 7 INC. BLOCK 4, AN ADDITION TO THE CITY OF SCOTTSBLUFF, NEBRASKA  
 A PART OF THE NW 1/4 SECTION 13, T22N, R55W, OF THE 6TH P.M.



**CURVE DATA**

1. WEST SIDE  $\Delta = 40^{\circ}11'$  EAST SIDE  $\Delta = 40^{\circ}11'$   
 $R = 90.4$   
 $T = 11.11$   
 $D = 188.30'$   
 $L = 21.32$

2. WEST SIDE  $\Delta = 18^{\circ}00'$  2. EAST SIDE  $\Delta = 18^{\circ}00'$   
 $R = 170$   
 $T = 26.92$   
 $D = 33^{\circ}42'$   
 $L = 53.41$

3. WEST SIDE  $\Delta = 15^{\circ}50'$   
 $R = 515$   
 $T = 71.4$   
 $D = 11^{\circ}07'$   
 $L = 142.45$

4. WEST SIDE  $\Delta = 42^{\circ}02'$  4. EAST SIDE  $\Delta = 42^{\circ}02'$   
 $R = 515$   
 $T = 147.86$   
 $D = 9^{\circ}58'$   
 $L = 378.09$

NOTE:  
 ALL DIMENSIONS SHOWN ON CURVES ARE CHORD MEASUREMENTS.  
 LENGTH OF CURVES SHOWN IN " CURVE DATA ARE ARC DISTANCES.

Center Section 13 T22N R55W

South Line NW 1/4

Block 132 map 535

24

SUNRISE HILLS, LOTS 1 TO 13 INCLUSIVE, BLOCK 5  
LOTS 6, 7 & 8 INCLUSIVE, BLOCK 3  
LOTS 1 TO 7 INCLUSIVE, BLOCK 4  
AN ADDITION TO THE CITY OF SCOTTSBLUFF, NEBRASKA

CONTINUATION, SHEET 2

2945

### SURVEYOR'S CERTIFICATE

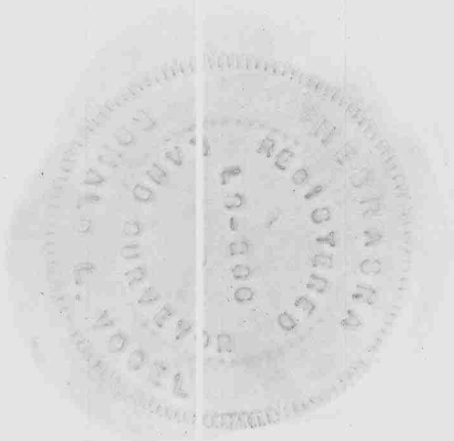
I, RONALD L. VOGEL, A COMPETENT SURVEYOR OF SCOTTS BLUFF COUNTY, NEBRASKA, HEREBY CERTIFY THAT I HAVE SURVEYED LOTS 1 TO 13 INCLUSIVE, BLOCK 5, LOTS 1 TO 7 INCLUSIVE, BLOCK 4 AND LOTS 6, 7 AND 8, BLOCK 3, SUNRISE HILLS, AN ADDITION TO THE CITY OF SCOTTSBLUFF, NEBRASKA, SITUATED ON PART OF THE SOUTH HALF OF THE NORTHWEST QUARTER (S $\frac{1}{2}$  NW $\frac{1}{4}$ ) OF SECTION THIRTEEN (13), TOWNSHIP TWENTY-TWO (22) NORTH, RANGE FIFTY-FIVE (55) WEST OF THE 6TH P.M., SCOTTS BLUFF COUNTY, NEBRASKA, THE BOUNDARY OF SUCH ADDITION BEING MORE PARTICULARLY DESCRIBED AS FOLLOWS:

COMMENCING AT THE SOUTHEAST CORNER OF SUCH SOUTH HALF OF THE NORTHWEST QUARTER: THENCE NORTH ON THE EAST LINE OF SUCH SOUTH HALF OF THE NORTHWEST QUARTER A DISTANCE OF 187.5 FEET TO THE NORTH LINE OF 35TH STREET; THENCE WEST ON THE NORTH LINE OF 35TH STREET A DISTANCE OF 619.7 FEET TO THE POINT OF BEGINNING; THENCE CONTINUING WEST ON THE NORTH LINE OF 35TH STREET A DISTANCE OF 310.0 FEET TO THE SOUTHEAST CORNER OF LOT 13, BLOCK 2, MCKINLEY SECOND ADDITION TO THE CITY OF SCOTTSBLUFF, NEBRASKA; THENCE ANGLE RIGHT 90 DEGREES 00 MINUTES A DISTANCE OF 14.13 FEET TO THE P.C. OF A CURVE TO THE LEFT WITH A RADIUS OF 405 FEET AND A CENTRAL ANGLE OF 42 DEGREES AND 02 MINUTES; THENCE ALONG SAID CURVE A DISTANCE OF 296.7 FEET TO THE P.T. OF SUCH CURVE; THENCE ALONG THE TANGENT TO SUCH CURVE A DISTANCE OF 317.5 FEET TO THE P.C. OF A CURVE TO THE LEFT WITH A RADIUS OF 405 FEET AND A CENTRAL ANGLE OF 15 DEGREES AND 50 MINUTES; THENCE ALONG THE CURVE A DISTANCE OF 111.3 FEET TO THE P.T. OF SUCH CURVE; THENCE ALONG THE TANGENT TO SUCH CURVE A DISTANCE OF 263.4 FEET TO THE P.C. OF A CURVE TO THE RIGHT WITH A RADIUS OF 95 FEET AND A CENTRAL ANGLE OF 19 DEGREES AND 28 MINUTES; THENCE ALONG SUCH CURVE A DISTANCE OF 31.95 FEET TO THE P.T. OF SUCH CURVE; THENCE ALONG THE TANGENT TO SUCH CURVE A DISTANCE OF 245.95 FEET TO THE SOUTH LINE OF 38TH STREET; THENCE EAST ON THE SOUTH LINE OF 38TH STREET A DISTANCE OF 423.3 FEET; THENCE ANGLE RIGHT 90 DEGREES 00 MINUTES A DISTANCE OF 58.7 FEET; THENCE ANGLE LEFT 55 DEGREES 32 MINUTES A DISTANCE OF 100.0 FEET; THENCE ANGLE LEFT 34 DEGREES 28 MINUTES A DISTANCE OF 62.65 FEET; THENCE ANGLE RIGHT 90 DEGREES 00 MINUTES A DISTANCE OF 120 FEET; THENCE ANGLE LEFT 90 DEGREES 00 MINUTES A DISTANCE OF 216.44 FEET; THENCE ANGLE RIGHT 90 DEGREES 00 MINUTES A DISTANCE OF 60.0 FEET; THENCE ANGLE LEFT 41 DEGREES 50 MINUTES A DISTANCE OF 383.1 FEET; THENCE ANGLE RIGHT 22 DEGREES 14 MINUTES A DISTANCE OF 242.5 FEET; THENCE ANGLE RIGHT 19 DEGREES 35 MINUTES A DISTANCE OF 150.0 FEET TO THE POINT OF BEGINNING AND CONTAINING AN AREA OF 8.63 ACRES MORE OR LESS OF DEEDED LAND.

THAT THE ACCOMPANYING PLAT IS A TRUE DELINEATION OF SUCH SURVEY DRAWN TO A SCALE OF 100 FEET TO THE INCH, THAT ALL BLOCK CORNERS ARE MARKED WITH 5/8" X 36" IRON RODS AND ALL OTHER CORNERS WITH 5/8" X 18" IRON RODS, THAT THE BOUNDARY OF THE SUBDIVISION IS SHOWN ON THE PLAT WITH A HEAVY DOTTED LINE, THAT EACH LOT AND BLOCK BEARS ITS OWN NUMBER, THAT ALL DIMENSIONS ARE IN FEET AND DECIMALS, THAT THE AREAS SHOWN IN DOTTED LINES ARE PLATTED SUBDIVISIONS AND ARE FOR ORIENTATION ONLY.

WITNESS MY HAND AND SEAL THIS 1<sup>st</sup> DAY OF August, 1968.

Ronald L. Vogel  
RONALD L. VOGEL  
NEBRASKA REGISTERED LAND SURVEYOR L.S. 266



SUNRISE HILLS, LOTS 1 TO 13 INCLUSIVE, BLOCK 5  
LOTS 6, 7 & 8 INCLUSIVE, BLOCK 3  
LOTS 1 TO 7 INCLUSIVE, BLOCK 4  
AN ADDITION TO THE CITY OF SCOTTSBLUFF, NEBRASKA

CONTINUATION, SHEET 3  
2945

DEDICATION AND ANNEXATION

WE, THE UNDERSIGNED, BEING THE OWNERS OF THAT PART OF THE SOUTH HALF OF THE NORTHWEST QUARTER (S $\frac{1}{2}$  NW $\frac{1}{4}$ ) OF SECTION THIRTEEN (13), TOWNSHIP TWENTY-TWO (22) NORTH, RANGE FIFTY-FIVE (55) WEST OF THE 6TH P.M., SCOTTS BLUFF COUNTY, NEBRASKA AS DESCRIBED IN THE ACCOMPANYING "SURVEYOR'S CERTIFICATE", HAVE CAUSED SUCH LAND TO BE SURVEYED AND PLATTED AS LOTS 1 TO 13 INCLUSIVE, BLOCK 5, LOTS 6, 7 & 8 INCLUSIVE, BLOCK 3, LOTS 1 TO 7 INCLUSIVE, BLOCK 4, SUNRISE HILLS, AN ADDITION TO THE CITY OF SCOTTSBLUFF, NEBRASKA AS SHOWN ON THE ACCOMPANYING PLAT AND SURVEYOR'S CERTIFICATE, THE FOREGOING SUBDIVISION OF SUNRISE HILLS AND THE STREETS, AVENUES, DRIVES, EASEMENTS AND BUILDING SETBACK DESIGNATIONS WITHIN AND ADJOINING THERETO, AS APPEARS ON THE PLAT, IS MADE WITH THE FREE CONSENT AND IN ACCORDANCE WITH THE DESIRES OF THE UNDERSIGNED OWNERS.

WE HEREBY DEDICATE THE STREETS, AVENUES, DRIVES AND EASEMENTS DESIGNATED AND REFERRED TO IN SUCH PLAT TO THE USE AND BENEFIT OF THE PUBLIC AND FURTHER ANNEX AND MAKE SUCH REAL ESTATE A PART OF THE CITY OF SCOTTSBLUFF, NEBRASKA.

DATED THIS 1<sup>st</sup> DAY OF August, 1968.

Robert M. Weber  
ROBERT M. WEBER

Rich S. Peckham  
RICH S. PECKHAM

Ethelyn Gail Weber  
ETHELYN GAIL WEBER

Edith C. Peckham  
EDITH C. PECKHAM

VALLEY DEVELOPERS, INC., A CORPORATION

PECKHAM FARMS, INC., A CORPORATION

BY: Herbert F. Ziegler  
HERBERT F. ZIEGLER, PRESIDENT

BY: Rich S. Peckham  
RICH S. PECKHAM, PRESIDENT



(SEAL)





SUNRISE HILLS, LOTS 1 TO 13 INCLUSIVE, BLOCK 5  
LOTS 6, 7 & 8 INCLUSIVE, BLOCK 3  
LOTS 1 TO 7 INCLUSIVE, BLOCK 4  
AN ADDITION TO THE CITY OF SCOTTSBLUFF, NEBRASKA

CONTINUATION, SHEET 4  
2945

ACKNOWLEDGEMENT

STATE OF Minnesota)  
Wadena COUNTY) SS

ON TH S 24th DAY OF August, 1968, BEFORE ME, A NOTARY PUBLIC,  
IN AND FOR SAID COUNTY, PERSONALLY CAME RICH S. PECKHAM AND EDITH C. PECKHAM, HUSBAND AND WIFE AND RICH S. PECKHAM, PRESIDENT OF PECKHAM FARMS, INC., A CORPORATION, TO ME KNOWN TO BE THE IDENTICAL PERSONS AND PRESIDENT WHOSE NAMES ARE AFFIXED TO THE ACCOMPANYING "DEDICATION AND ANNEXATION" AND ACKNOWLEDGE THE SAME TO BE THEIR VOLUNTARY ACT AND DEED AND THE VOLUNTARY ACT AND DEED OF SAID CORPORATION,  
WITNESS MY HAND AND NOTARIAL SEAL THIS 24th DAY OF August, 1968.

AMBEROSE WINFELS, Wadena  
Notary Public, Wadena County, Minn.  
My Commission Expires Nov. 11, 1973

[Signature]  
NOTARY PUBLIC

MY COMMISSION EXPIRES: Nov. 11, 1973

ACKNOWLEDGEMENT

STATE OF NEBRASKA )  
SCOTTS BLUFF COUNTY ) SS

ON THIS 1st DAY OF August, 1968, BEFORE ME, A NOTARY PUBLIC  
IN AND FOR SAID COUNTY, PERSONALLY CAME ROBERT M. WEBER AND ETHELYN GAIL WEBER, HUSBAND AND WIFE, TO ME KNOWN TO BE THE IDENTICAL PERSONS WHOSE NAMES ARE AFFIXED TO THE ACCOMPANYING "DEDICATION AND ANNEXATION" AND ACKNOWLEDGE THE SAME TO BE THEIR VOLUNTARY ACT AND DEED.

WITNESS MY HAND AND NOTARIAL SEAL THIS 1st DAY OF August, 1968.

[Signature]  
NOTARY PUBLIC

MY COMMISSION EXPIRES: September 6, 1972

ACKNOWLEDGEMENT

STATE OF NEBRASKA )  
SCOTTS BLUFF COUNTY ) SS

ON THIS 9th DAY OF September, 1968, BEFORE ME, A NOTARY PUBLIC  
IN AND FOR SAID COUNTY, PERSONALLY CAME HERBERT F. ZIEGLER, PRESIDENT OF VALLEY DEVELOPERS, INC., A CORPORATION, TO ME KNOWN TO BE THE PRESIDENT AND IDENTICAL PERSON WHOSE NAME IS AFFIXED TO THE ACCOMPANYING "DEDICATION AND ANNEXATION" AND ACKNOWLEDGE THE SAME TO BE HIS VOLUNTARY ACT AND DEED AND THE VOLUNTARY ACT AND DEED OF SAID CORPORATION,  
WITNESS MY HAND AND NOTARIAL SEAL THIS 9th DAY OF September, 1968.

[Signature]  
NOTARY PUBLIC

MY COMMISSION EXPIRES: 7/17/73

APPROVAL AND ACCEPTANCE

THE ACCOMPANYING PLAT AND "DEDICATION AND ANNEXATION" APPROVED AND ACCEPTED BY THE MAYOR AND CITY COUNCIL OF THE CITY OF SCOTTSBLUFF, NEBRASKA BY RESOLUTION DULY PASSED THIS 14th DAY OF October, 1968, WITHOUT PREJUDICE, HOWEVER, TO THE VALIDITY OF A PRIOR ANNEXATION OF SUCH LANDS,

[Signature]  
MAYOR

ATTEST: [Signature]  
W. L. FERGUSON, CITY CLERK

