

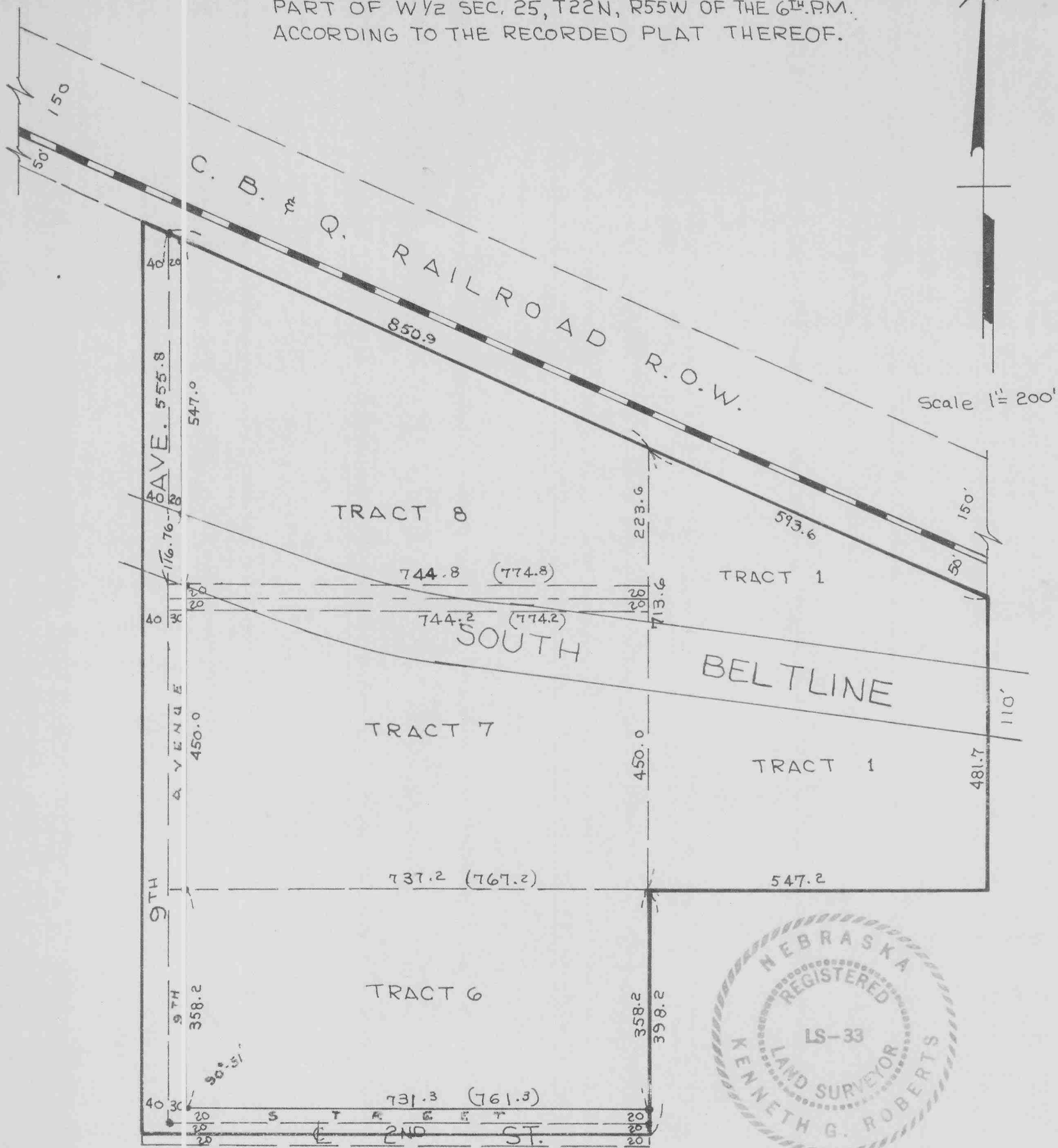
Note: See Heilbrunn Subdivision of Pt. T²²N R⁵⁵W - Book 137, Pa. 416

346

UNION LIVESTOCK ADDITION

2382

TO THE CITY OF SCOTTSBLUFF, NEBRASKA
A PART OF THE EXISTING SUBDIVISION OF
PART OF W 1/2 SEC. 25, T22N, R55W OF THE 6TH P.M.
ACCORDING TO THE RECORDED PLAT THEREOF.



SURVEYOR'S CERTIFICATE

I, KENNETH GEORGE ROBERTS, A COMPETENT SURVEYOR OF SCOTTSBLUFF COUNTY, NEBRASKA DO HEREBY CERTIFY THAT I HAVE SURVEYED TRACTS 1, 6, 7 & 8 SUBDIVISION OF PART OF THE WEST HALF OF SEC. 25 T22N R55W OF THE 6TH P.M. ACCORDING TO THE RECORDED PLAT THEREOF AND HAVE PLATTED SAME "UNION LIVESTOCK ADDITION" TO THE CITY OF SCOTTSBLUFF, NEBRASKA.

THAT THE ACCOMPANYING PLAT IS A CORRECT DELINATION OF SUCH SURVEY DRAWN TO A SCALE OF 200 FEET TO ONE INCH. WITH ALL DIMENSIONS SHOWN THEREON IN FEET AND DECIMALS.

THAT IRON RODS ARE DRIVEN WELL INTO THE GROUND AT EACH CORNER OF EACH TRACT AS SHOWN, THE HEAVY SOLID LINE DESIGNATES THE ADDITION BOUNDARY.

WITNESS MY HAND AND SEAL THIS 7TH DAY OF AUGUST 1968.

Kenneth George Roberts
KENNETH GEORGE ROBERTS
SCOTTSBLUFF, NEBRASKA
NEBRASKA REGISTERED LAND SURVEYOR
LS. 33

ACKNOWLEDGEMENT

STATE OF NEBRASKA, COUNTY OF LANCASTER:

BEFORE ME, A NOTARY PUBLIC QUALIFIED FOR SAID COUNTY, PERSONALLY CAME CHARLES H. THORNE, ASST. VICE PRESIDENT OF BANKERS LIFE INSURANCE COMPANY OF NEBRASKA, A CORPORATION, KNOW TO ME TO BE THE ASST. VICE PRESIDENT AND IDENTICAL PERSON WHO SIGNED THE FOREGOING INSTRUMENT, AND ACKNOWLEDGED THE EXECUTION THEREOF TO BE HIS VOLUNTARY ACT AND DEED AS SUCH OFFICER AND THE VOLUNTARY ACT AND DEED OF SAID CORPORATION AND THAT IT'S CORPORATE SEAL WAS THERE TO AFFIXED BY ITS AUTHORITY. WITNESS MY HAND AND NOTARIAL SEAL August 9, 1968.



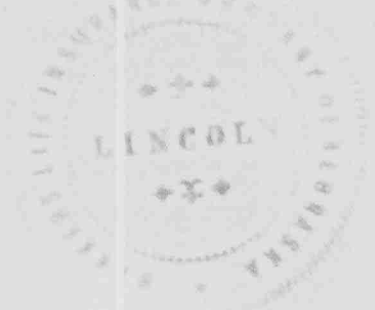
Ruby V. Sullivan
NOTARY PUBLIC
Ruby V. Sullivan, Notary Public
State of Nebraska
My commission expires Sept. 30, 1972

MY COMMISSION EXPIRES:

DEDICATION & ANNEXATION

THE UNDERSIGNED, BANKER'S LIFE INSURANCE COMPANY OF NEBRASKA, A NEBRASKA CORPORATION, BEING THE OWNER OF THE LANDS COMPRISED WITHIN THE ABOVE DESCRIBED UNION LIVESTOCK ADDITION, DO HEREBY ANNEX AND CAUSE SUCH LAND TO BE INCLUDED WITHIN AND MADE A PART OF THE CITY OF SCOTTSBLUFF, NEBRASKA, AND HEREBY DEDICATE THE STREETS AND AVENUES DESIGNATED ON SUCH PLAT BY A HEAVY SOLID LINE TO THE USE AND BENEFIT OF THE PUBLIC.

DATED THIS 9 DAY OF August, 1968.



BANKER'S LIFE INSURANCE COMPANY OF NEBRASKA

BY Charles H. Thorne
CHARLES H. THORNE
ASST. VICE PRESIDENT

ACCEPTANCE

THE ABOVE PLAT APPROVED BY THE MAYOR AND CITY COUNCIL OF THE CITY OF SCOTTSBLUFF, NEBRASKA BY RESOLUTION DULY PASSED ON THIS 12TH DAY OF AUGUST, 1968.

ATTEST: Dorothy F. Fischer
DEPUTY CITY CLERK

W. A. Thomas
MAYOR



NUMERICAL GENERAL TAX REG. PICTURED } ss.
2382 }
STATE OF NEBRASKA }
SCOTTS BLUFF COUNTY }
Entered on Numerical Index and filed for record the 2 day of August 1968, at 10:50 o'clock A. M., and recorded in Book 127 of Deed
Records on Page 346
Mary Jo Kellis Register of Deeds
By _____ Deputy