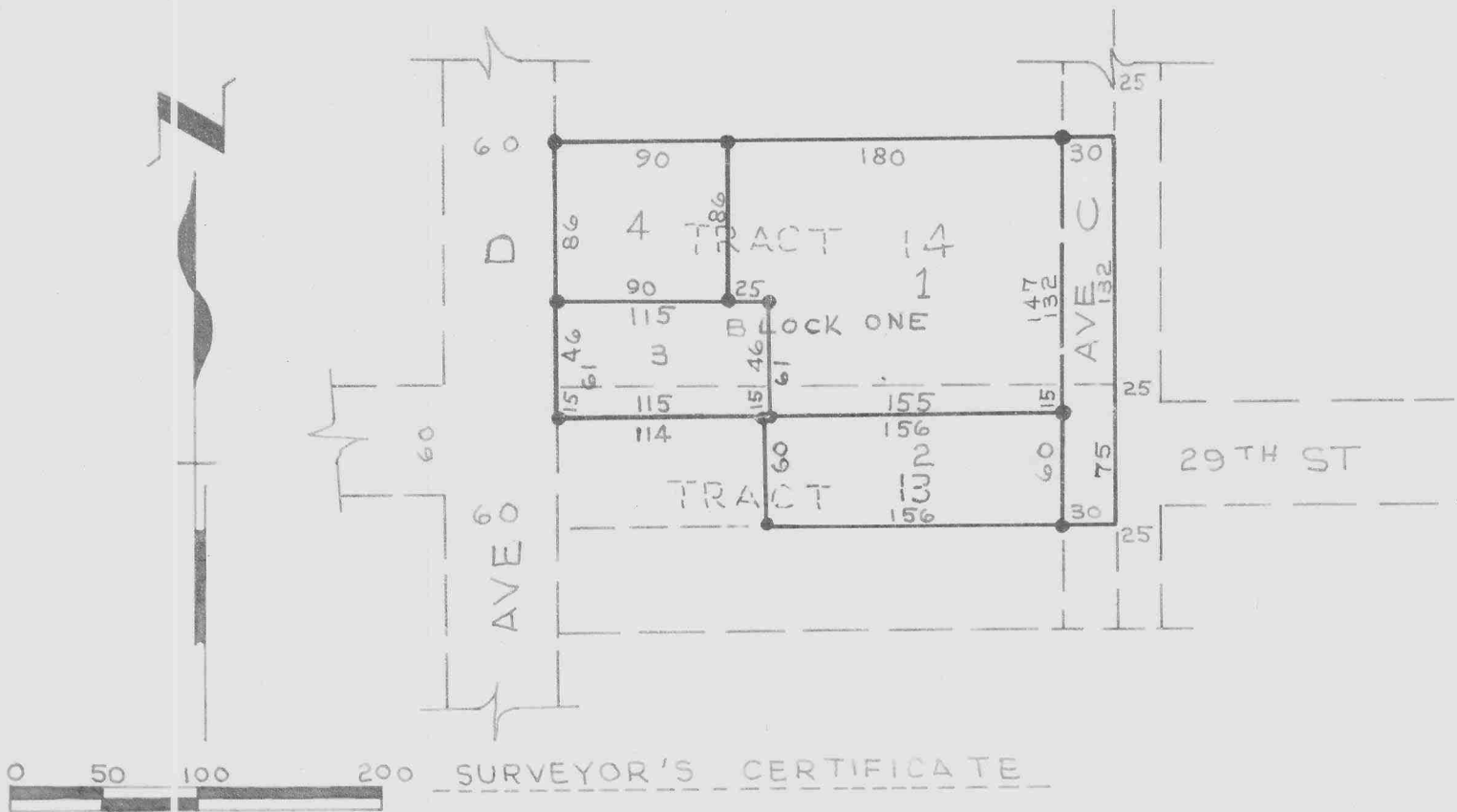


STARR'S SECOND SUBDIVISION
 OF TRACT 14 & N 75' OF TRACT 13, EXCEPT S 60' OF
 W 114' THEREOF GOOS TRACTS, AN ADDITION OF THE
 CITY OF SCOTTSBLUFF, NEBRASKA

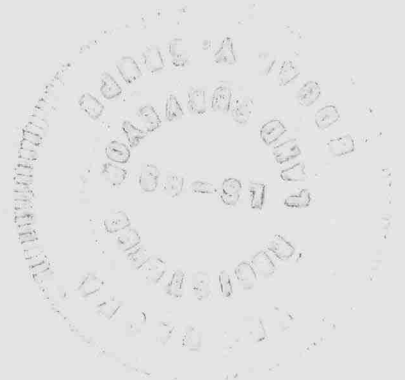


I, E.Y. GRUPE, A COMPETENT SURVEYOR OF SCOTTSBLUFF COUNTY, NEBRASKA, DO HEREBY CERTIFY THAT A SURVEY WAS COMPLETED UNDER MY DIRECTION OF "STARR'S SECOND SUBDIVISION", OF TRACT FOURTEEN (14) AND THE NORTH 75 FEET OF TRACT 13, EXCEPT THE SOUTH 60 FEET OF THE WEST 114 FEET THEREOF, GOOS TRACTS, AN ADDITION OF THE CITY OF SCOTTSBLUFF, NEBRASKA, AND SUCH LAND HAS BEEN SUBDIVIDED AS LOTS, 1, 2, 3 & 4, BLOCK ONE, OF "STARR'S SECOND SUBDIVISION", AND PART OF AVE. "C".

THAT THE ACCOMPANYING PLAT IS A CORRECT DELINEATION OF SUCH SURVEY DRAWN TO A SCALE OF 100 FEET TO ONE INCH WITH ALL DIMENSIONS SHOWN THEREON IN FEET AND DECIMALS. THAT 5/8" x 36" IRON RODS ARE DRIVEN WELL INTO THE GROUND AT ALL CORNERS OF SUCH BLOCK ONE, AS SHOWN. THAT ALL INTERIOR LOT CORNERS ARE MARKED WITH 5/8" x 18" IRON RODS. THAT THE BOUNDARY OF THE SUBDIVISION IS MARKED WITH A HEAVY SOLID LINE AND ALL BROKEN LINES INDICATE LANDS AND RIGHTS OF WAYS ADJOINING BUT NOT A PART OF THIS SUBDIVISION.

WITNESS MY HAND AND SEAL THIS 10 DAY OF JUNE 1968.

E.Y. Grupe
 E.Y. GRUPE, SCOTTSBLUFF, NEBRASKA
 NEBRASKA REGISTERED LAND SURVEYOR L.S. 69



DEDICATION

WE, THE UNDERSIGNED, BEING THE OWNERS OF TRACT FOURTEEN (14) AND THE NORTH 75 FEET OF TRACT 13, EXCEPT THE 560 FEET OF THE W114 FEET THEREOF, GOOS TRACTS, AN ADDITION IN THE CITY OF SCOTTSBLUFF, NEBRASKA, HAVE CAUSED SUCH LAND TO BE SURVEYED, SUBDIVIDED AND PLATTED AS "STARR'S SECOND SUBDIVISION" AS SHOWN ON THE ACCOMPANYING PLAT AND SURVEYOR'S CERTIFICATE.

THE FOREGOING SUBDIVISION OF REAL ESTATE AS APPEARS ON THE ACCOMPANYING PLAT IS MADE WITH THE FREE CONSENT AND IN ACCORDANCE WITH THE DESIRES OF THE UNDERSIGNED OWNERS.

WE HEREBY DEDICATE THE AVENUES, DESIGNATED UPON AND REFERRED TO IN SUCH PLAT TO THE USE AND BENEFIT OF THE PUBLIC.

DATED THIS 12TH DAY OF JUNE 1968.

Fay Starr
FAY STARR
Leva Starr
LEVA STARR

ACKNOWLEDGEMENT

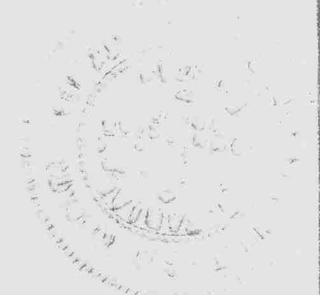
STATE OF NEBRASKA)
)
COUNTY OF SCOTTSBLUFF)

BEFORE ME, A NOTARY PUBLIC QUALIFIED FOR SUCH COUNTY, PERSONALLY CAME FAY STARR AND LEVA STARR, HUSBAND AND WIFE; KNOWN TO ME TO BE THE IDENTICAL PERSONS WHO SIGNED THE FOREGOING INSTRUMENT, AND ACKNOWLEDGED THE EXECUTION THEREOF TO BE THEIR VOLUNTARY ACT AND DEED.

WITNESS MY HAND AND NOTARIAL SEAL ON JUNE 12, 1968

Kenneth G. Roberts
NOTARY PUBLIC

MY COMMISSION EXPIRES: 27TH February 1969



APPROVAL AND ACCEPTANCE

THE ACCOMPANYING PLAT AND DEDICATION APPROVED AND ACCEPTED BY THE MAYOR AND CITY COUNCIL OF THE CITY OF SCOTTSBLUFF, NEBRASKA BY RESOLUTION DULY PASSED THIS 12TH DAY OF JUNE, 1968

L. A. Thomas
MAYOR

ATTEST:
W. L. Ferguson
CITY CLERK W. L. FERGUSON