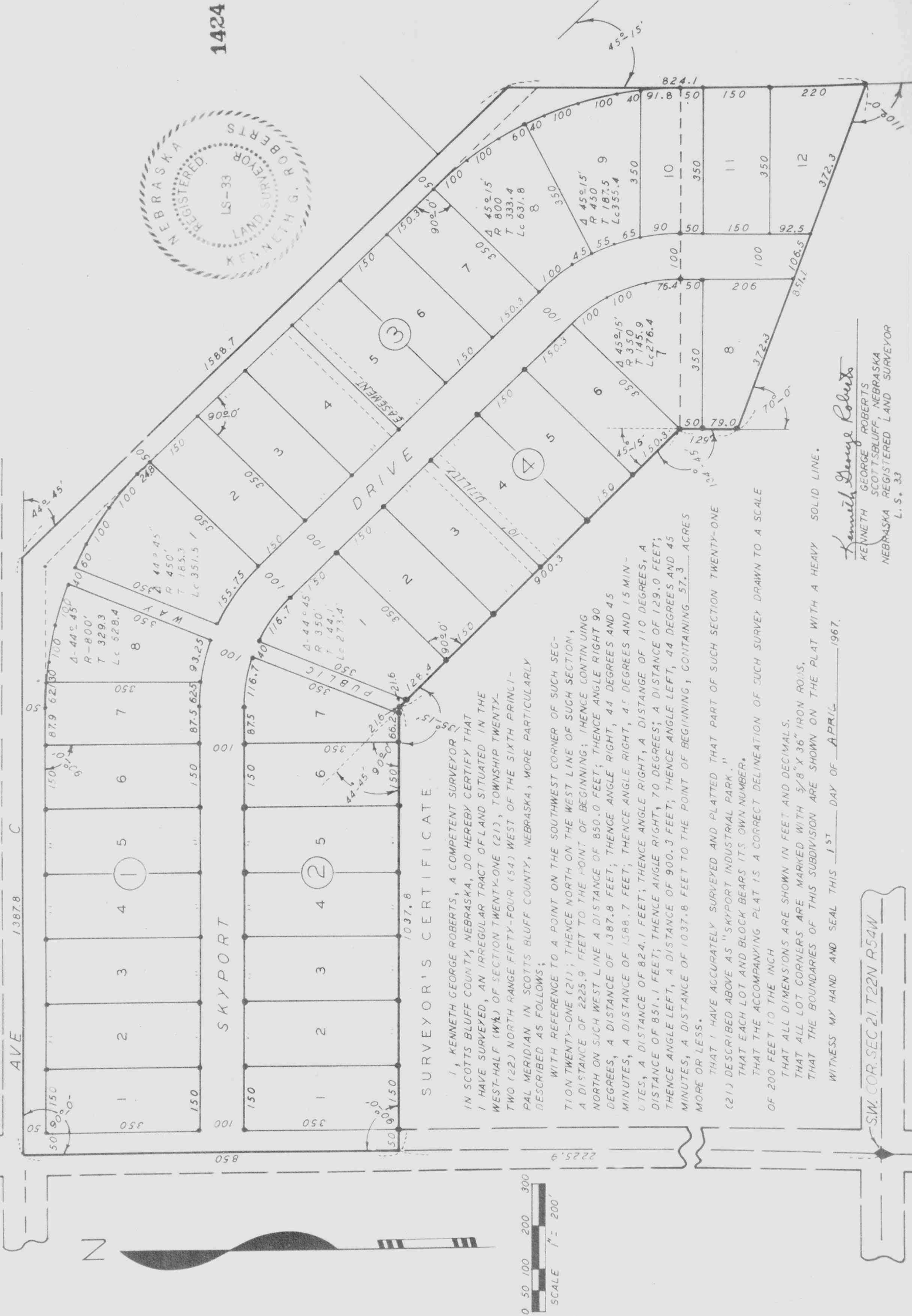


SKYPORT INDUSTRIAL PARK

A SUBDIVISION OF A PART OF SECTION 21, T22N R54W OF THE 6TH P.M. IN SCOTTSBLUFF COUNTY, NEBRASKA



SURVEYOR'S CERTIFICATE

I, KENNETH GEORGE ROBERTS, A COMPETENT SURVEYOR IN SCOTTS BLUFF COUNTY, NEBRASKA, DO HEREBY CERTIFY THAT I HAVE SURVEYED, AN IRREGULAR TRACT OF LAND SITUATED IN THE WEST-HALF (W $\frac{1}{2}$) OF SECTION TWENTY-ONE (21), TOWNSHIP TWENTY-TWO (22) NORTH RANGE FIFTY-FOUR (54) WEST OF THE SIXTH PRINCIPAL MERIDIAN IN SCOTTS BLUFF COUNTY, NEBRASKA, MORE PARTICULARLY DESCRIBED AS FOLLOWS;

WITH REFERENCE TO A POINT ON THE SOUTHWEST CORNER OF SUCH SECTION TWENTY-ONE (21); THENCE NORTH ON THE WEST LINE OF SUCH SECTION, A DISTANCE OF 2225.9 FEET TO THE POINT OF BEGINNING; THENCE CONTINUING NORTH ON SUCH WEST LINE A DISTANCE OF 850.0 FEET; THENCE ANGLE RIGHT 90 DEGREES, A DISTANCE OF 1387.8 FEET; THENCE ANGLE RIGHT, 44 DEGREES AND 45 MINUTES, A DISTANCE OF 1588.7 FEET; THENCE ANGLE RIGHT, 41 DEGREES AND 15 MINUTES, A DISTANCE OF 824.1 FEET; THENCE ANGLE RIGHT, A DISTANCE OF 110 DEGREES, A DISTANCE OF 851.1 FEET; THENCE ANGLE RIGHT, 70 DEGREES; A DISTANCE OF 129.0 FEET; THENCE ANGLE LEFT, A DISTANCE OF 900.3 FEET; THENCE ANGLE LEFT, 44 DEGREES AND 45 MINUTES, A DISTANCE OF 1037.8 FEET TO THE POINT OF BEGINNING, CONTAINING 57.3 ACRES MORE OR LESS.

THAT I HAVE ACCURATELY SURVEYED AND PLATTED THAT PART OF SUCH SECTION TWENTY-ONE (21) DESCRIBED ABOVE AS "SKYPORT INDUSTRIAL PARK."

THAT EACH LOT AND BLOCK BEARS ITS OWN NUMBER. THAT THE ACCOMPANYING PLAT IS A CORRECT DELINEATION OF SUCH SURVEY DRAWN TO A SCALE OF 200 FEET TO THE INCH

THAT ALL DIMENSIONS ARE SHOWN IN FEET AND DECIMALS. THAT ALL LOT CORNERS ARE MARKED WITH 5/8" X 36" IRON RODS. THAT THE BOUNDARIES OF THIS SUBDIVISION ARE SHOWN ON THE PLAT WITH A HEAVY SOLID LINE.

WITNESS MY HAND AND SEAL THIS 15TH DAY OF APRIL 1967.

Kenneth George Roberts
 KENNETH GEORGE ROBERTS
 SCOTTSBLUFF, NEBRASKA
 NEBRASKA REGISTERED LAND SURVEYOR
 L. S. 33

S.W. COR. SEC. 21, T22N R54W

"SKYPORT INDUSTRIAL PARK" CONTINUATION SHEET NO. 2

1424

THE UNDERSIGNED, BEING THE OWNER OF THAT PART OF THE WEST-HALF OF SECTION TWENTY-ONE (21) DESCRIBED IN THE FOREGOING SURVEYOR'S CERTIFICATE, HAS CAUSED SUCH LAND TO BE SURVEYED AND PLATTED AS "SKYPORT INDUSTRIAL PARK," A SUBDIVISION IN SCOTTS BLUFF COUNTY, NEBRASKA.

THE UNDERSIGNED HEREBY DEDICATES THE STREETS, EASEMENTS, AND WAYS DESIGNATED UPON AND REFERRED TO IN THE ACCOMPANYING PLAT TO THE USE AND BENEFIT OF THE PUBLIC.

DATED THIS 22nd DAY OF May, 1967.

CITY OF SCOTTSBLUFF, NEBRASKA
A MUNICIPAL CORPORATION

BY C. A. Thomas
MAYOR

ATTEST:

Lawrence J. Lischer
DEPUTY CITY CLERK

A C K N O W L E D G E M E N T

STATE OF NEBRASKA)
SCOTTS BLUFF COUNTY) SS

BEFORE ME, A NOTARY PUBLIC, QUALIFIED IN SAID COUNTY, PERSONALLY CAME C. A. THOMAS, MAYOR OF THE CITY OF SCOTTSBLUFF, NEBRASKA, A MUNICIPAL CORPORATION, KNOWN TO ME TO BE THE MAYOR AND IDENTICAL PERSON WHO SIGNED THE FOREGOING PLAT AND DEDICATION, AND ACKNOWLEDGED THE EXECUTION THEREOF TO BE HIS VOLUNTARY ACT AND DEED AS SUCH OFFICER AND THE VOLUNTARY ACT AND DEED OF THE CORPORATION, AND THAT THE CORPORATE SEAL OF THE CORPORATION WAS THERETO AFFIXED BY ITS AUTHORITY.

WITNESS MY HAND AND SEAL THIS 22ND DAY OF MAY, 1967.

Kenneth G. Roberts
NOTARY PUBLIC

MY COMMISSION EXPIRES: 27 February 1969

