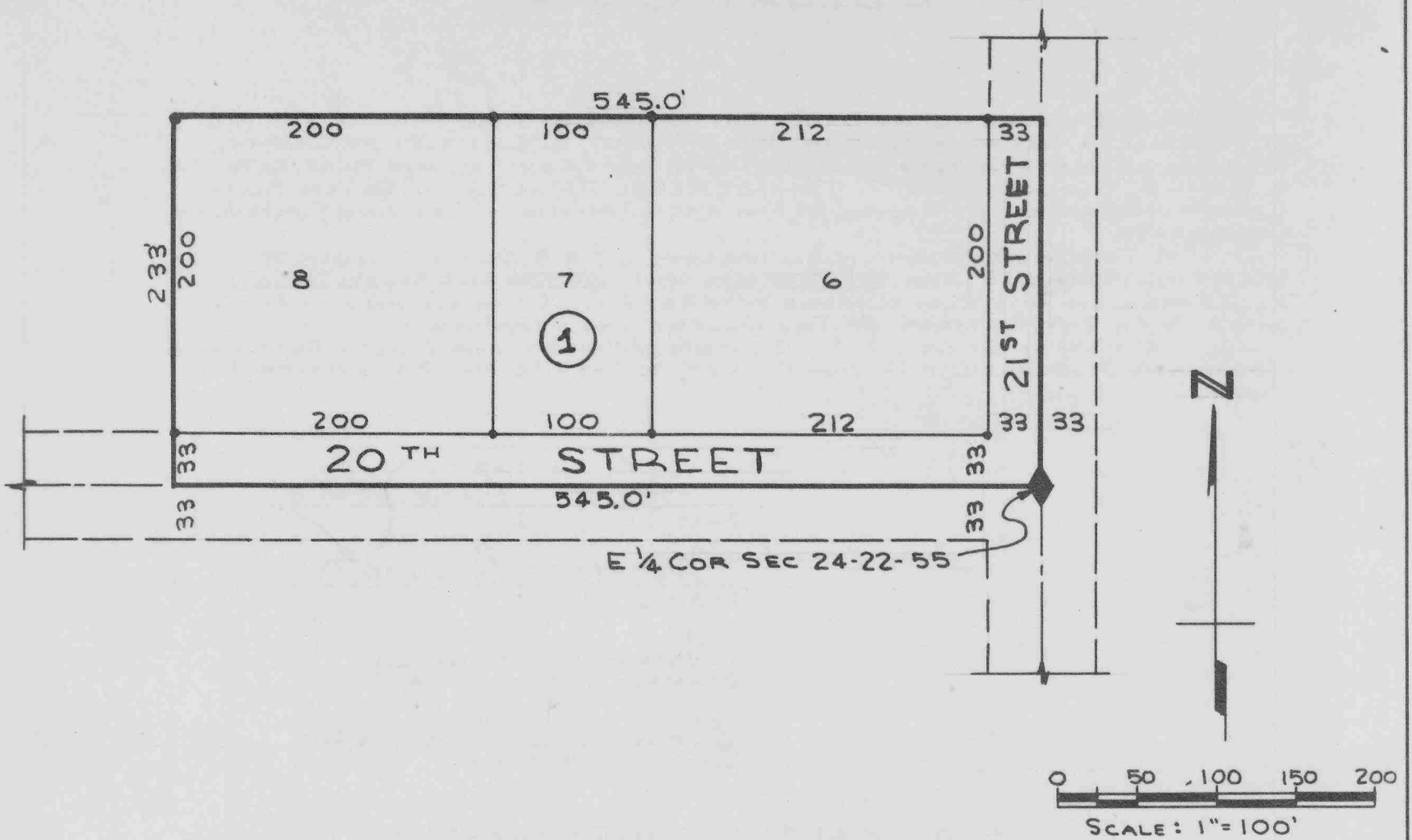


# QUINDT COMMERCIAL TRACTS

00130

LOTS 6, 7, & 8 BLOCK 1

SUB DIV OF A PART OF NE 1/4 SEC 24 T22N R55W 6TH PM



## ○ SURVEYOR'S CERTIFICATE ○

I, E. Y. GRUPE, A COMPETENT SURVEYOR OF SCOTTS BLUFF COUNTY, NEBRASKA, HEREBY CERTIFY THAT ON THE 6<sup>TH</sup> DAY OF OCTOBER, 1963 A SURVEY WAS COMPLETED UNDER MY DIRECTION OF QUINDT'S COMMERCIAL TRACTS SITUATED ON A PART OF THE NORTHEAST QUARTER (NE 1/4) OF SECTION TWENTY FOUR (24), TOWNSHIP TWENTY TWO (22) NORTH, RANGE FIFTY FIVE (55) WEST OF THE SIXTH PRINCIPAL MERIDIAN; MORE PARTICULARLY DESCRIBED AS FOLLOWS;

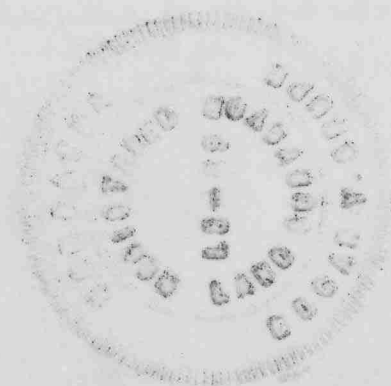
BEGINNING AT A POINT ON THE SOUTHEAST CORNER OF SAID NORTHEAST QUARTER (NE 1/4); THENCE WEST ON THE SOUTH LINE OF SAID NORTHEAST QUARTER (NE 1/4) FOR A DISTANCE OF 545.0 FEET; THENCE NORTH AND PARALLEL TO THE EAST LINE OF SAID NORTHEAST QUARTER (NE 1/4) FOR A DISTANCE OF 233.0 FEET; THENCE EAST AND PARALLEL TO THE SOUTH LINE OF SAID NORTHEAST QUARTER (NE 1/4) FOR A DISTANCE OF 545.0 FEET; THENCE SOUTH 233.0 FEET TO THE POINT OF BEGINNING.

THAT THE ACCOMPANYING PLAT IS A CORRECT DELINEATION OF SAID SURVEY DRAWN TO A SCALE OF 100 FEET TO AN INCH. THAT EACH LOT AND BLOCK BEARS ITS OWN NUMBER. THAT ALL DIMENSIONS ARE SHOWN IN FEET AND DECIMAL. THAT 5/8" x 36" IRON RODS ARE DRIVEN WELL INTO THE GROUND AT THE CORNERS OF THE LOTS. THAT THE BOUNDARY OF THE SUBDIVISION IS MARKED WITH A HEAVY SOLID LINE AND ALL BROKEN LINES INDICATE LANDS AND RIGHTS OF WAYS ADJOINING BUT NOT A PART OF THIS SUBDIVISION.

WITNESS MY HAND AND SEAL THIS 6<sup>TH</sup> DAY OF OCTOBER, 1963.

*E. Y. Grupe*

E. Y. GRUPE, SCOTTSBLUFF, NEBRASKA  
NEBRASKA REGISTERED LAND SURVEYOR  
LS 69





DEDICATION

WE, THE UNDERSIGNED BEING THE OWNERS OF THAT PART OF THE NE 1/4 OF SECTION 24 T22N R55W OF THE 6TH P.M. IN SCOTTS BLUFF COUNTY, NEBRASKA, HAVE CAUSED SUCH LAND TO BE SURVEYED AND PLATTED AS LOTS 6, 7 AND 8, BLOCK 1, QUINDT COMMERCIAL TRACTS IN SCOTTS BLUFF COUNTY, NEBRASKA, AS SHOWN BY THE ACCOMPANYING PLAT AND SURVEYOR'S CERTIFICATE.

THE FOREGOING SUBDIVISION OF LOTS 6, 7, & 8, BLOCK 1, QUINDT COMMERCIAL TRACTS AND THE STREETS AND AVENUES AND ALLEYS ADJOINING AS APPEAR ON THIS PLAT IS MADE WITH THE FREE CONSENT AND IN ACCORDANCE WITH THE DESIRES OF THE UNDERSIGNED OWNERS.

WE HEREBY DEDICATE THE STREETS, AVENUES, AND ALLEYS DESIGNATED UPON AND REFERRED TO IN SUCH PLAT, TO THE USE AND BENEFIT OF THE PUBLIC.

Fred Quintdt  
FRED QUINDT

Marie Quintdt  
MARIE QUINDT

Bernard T. Straetker  
BERNARD T. STRAETKER

Emma Straetker  
EMMA STRAETKER

ACKNOWLEDGEMENT

STATE OF NEBRASKA )  
SCOTTS BLUFF COUNTY ) SS:

ON THIS 5th DAY OF NOVEMBER 1963, BEFORE ME A NOTARY PUBLIC, IN AND FOR SAID COUNTY PERSONALLY APPEARED FRED QUINDT AND MARIE QUINDT, HUSBAND AND WIFE; AND BERNARD T. STRAETKER AND EMMA STRAETKER, HUSBAND AND WIFE, TO ME KNOWN TO BE THE IDENTICAL PERSONS WHOSE NAMES ARE AFFIXED TO THE FOREGOING PLAT AND DEDICATION, AND ACKNOWLEDGED THE SAME TO BE THEIR VOLUNTARY ACT AND DEED.

WITNESS MY HAND AND SEAL THE DAY AND YEAR LAST WRITTEN ABOVE

True R. Ferguson  
NOTARY PUBLIC

MY COMMISSION EXPIRES 11/12/67

APPROVAL AND ACCEPTANCE

THE ATTACHED PLAT, LOTS 6, 7, & 8, QUINDT COMMERCIAL TRACTS IN SCOTTS BLUFF COUNTY, NEBRASKA, APPROVED AND ACCEPTED BY THE MAYOR AND CITY COUNCIL OF THE CITY OF SCOTTS BLUFF, NEBRASKA BY RESOLUTION DULY PASSED ON THIS 11th DAY OF November 1963.

Clark B. Williams  
MAYOR

ATTEST L.P. Ferguson  
CITY CLERK

