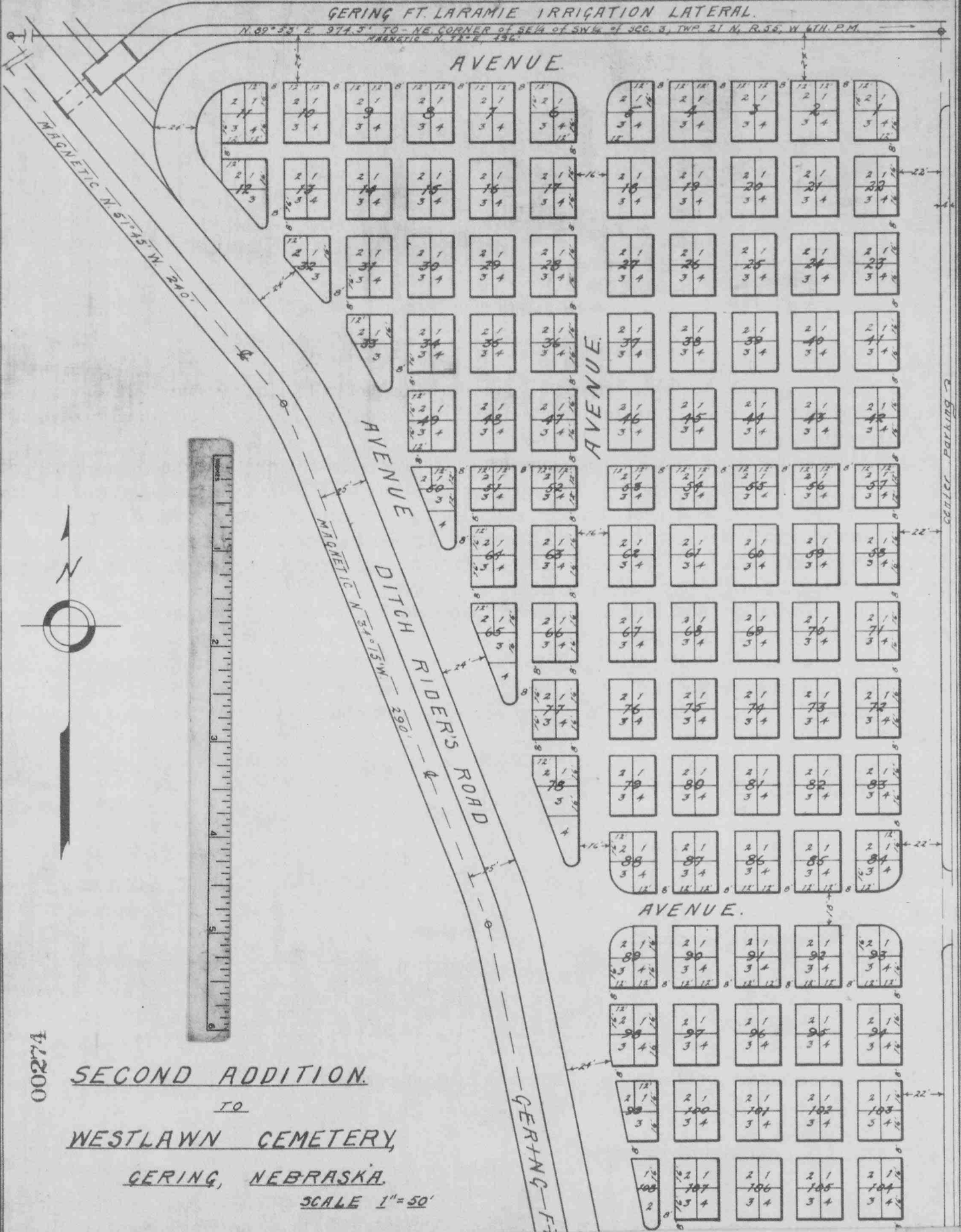


GERING FT. LARAMIE IRRIGATION LATERAL.

N. 89° 53' E. 374.5' TO NE CORNER OF SE 1/4 of SW 1/4 of SEC. 3, TWP. 21 N., R. 35 W. 4TH. P.M.
MAGNETIC N. 71° 5' E. 456'



00274

SECOND ADDITION

TO

WESTLAWN CEMETERY,

GERING, NEBRASKA

SCALE 1" = 50'

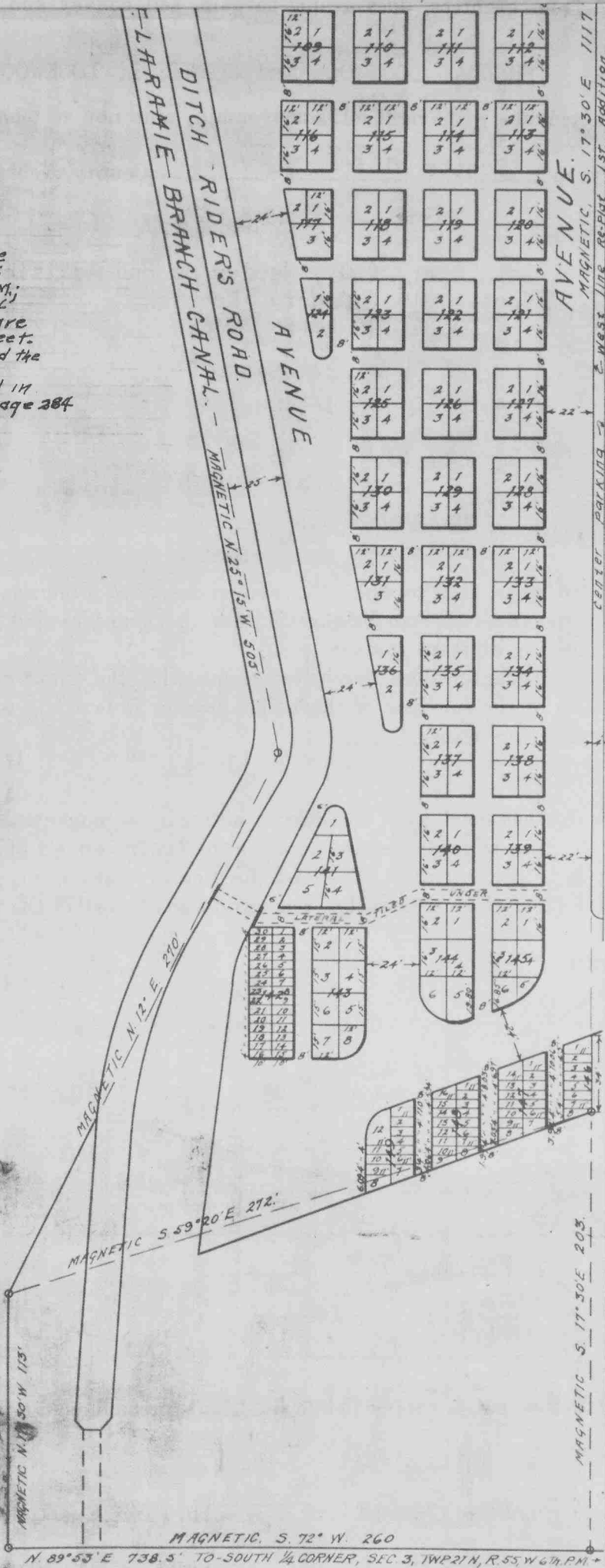
STATE of NEBRASKA } SS
SCOTTS BLUFF COUNTY }

Thereby certify that on March 10th 1940,
I surveyed the SECOND ADDITION to WESTLAWN
CEMETERY, GERING, NEBRASKA; Located in the
South East 1/4 of the South West 1/4 (SE 1/4 SW 1/4) of
Sec. 3, Tp 21 North Range 55 West of the 6th P.M.;
and that this plat is a true representation of
said survey, and that the Blocks and Lots are
drawn on said plat to a scale of 1 inch = 50 feet.
Each Block and Lot has its own Number, and the
Avenues are plainly Marked.

This Addition is located on land described in
a deed recorded in Deed Record No 39 at page 384

H. E. Lentz
Co. Surveyor

STATE OF NEBRASKA, } SS
SCOTTS BLUFF COUNTY }
Entered on Numerical Index and filed for record
the 15 day of February 1943 at 10:15
o'clock A.M. and recorded in Book 188 of
Deeds on Page 486
Mary Jo Hollis
REGISTER OF DEEDS
By _____ Deputy



00274