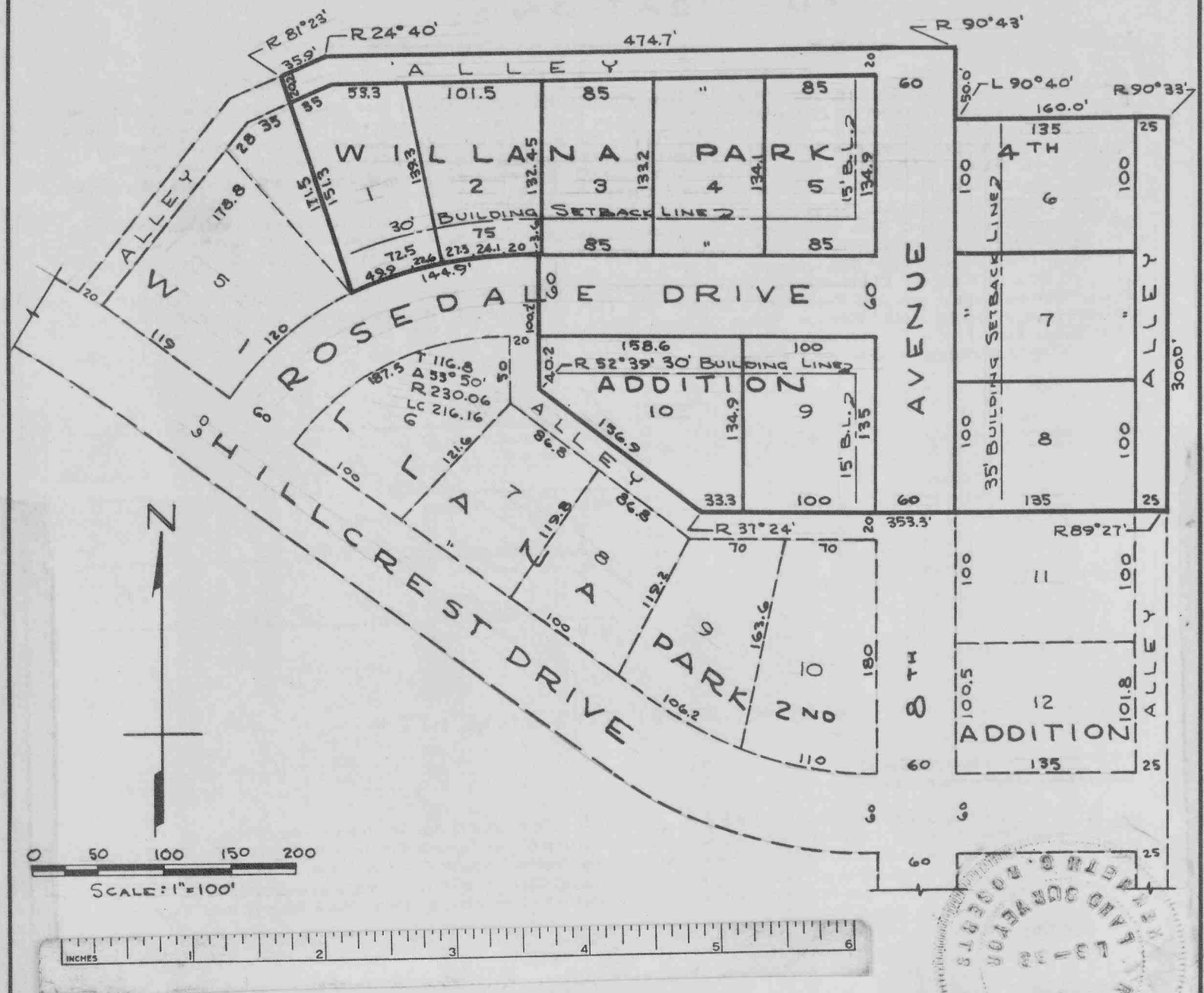


5587

WILLANA PARK 4TH ADDITION LOTS 1 TO 10 INCLUSIVE



SURVEYOR'S CERTIFICATE

I, KENNETH GEORGE ROBERTS, A COMPETENT SURVEYOR HEREBY CERTIFY THAT ON THE 15TH DAY OF APRIL, 1962, I COMPLETED A SURVEY OF LOTS ONE (1) THROUGH TEN (10) INCLUSIVE, WILLANA PARK 4TH ADDITION TO THE CITY OF SCOTTS BLUFF, SCOTTS BLUFF COUNTY, NEBRASKA, AND A PART OF ROSEDALE DRIVE, 8TH AVENUE, AND ALLEYS ABUTTING SAID LOTS, ALL SITUATED ON A PART OF THE WEST-HALF (W¹/₂) OF THE SOUTH WEST QUARTER (SW¹/₄) SECTION THIRTEEN (13), TOWNSHIP TWENTY TWO (22) NORTH, RANGE FIFTY FIVE (55) WEST OF THE 6TH P.M. IN SCOTTS BLUFF COUNTY, NEBRASKA, MORE PARTICULARLY DESCRIBED AS FOLLOWS:

BEGINNING AT A POINT ON THE EAST LINE OF LOT FIVE (5), WILLANA PARK SECOND ADDITION IN THE CITY OF SCOTTSBLUFF, NEBRASKA AND THE NORTHERN LINE OF ROSEDALE DRIVE AS PLATTED AND RECORDED AS PART OF SAID WILLANA PARK SECOND ADDITION; THENCE NORTHWESTERLY ALONG THE SAID EAST LINE OF SAID LOT FIVE (5) EXTENDED, FOR A DISTANCE OF 171.5 FEET; THENCE RIGHT A DEFLECTION ANGLE OF 81 DEGREES AND 23 MINUTES, FOR A DISTANCE OF 35.9 FEET; THENCE RIGHT A DEFLECTION ANGLE OF 24 DEGREES AND 40 MINUTES, FOR A DISTANCE OF 474.7 FEET TO THE EAST LINE OF 8TH AVENUE EXTENDED NORTH; THENCE RIGHT A DEFLECTION ANGLE OF 90 DEGREES AND 43 MINUTES FOR A DISTANCE OF 50 FEET; THENCE LEFT A DEFLECTION ANGLE OF 90 DEGREES AND 40 MINUTES, FOR A DISTANCE OF 160 FEET; THENCE RIGHT A DEFLECTION ANGLE OF 90 DEGREES AND 33 MINUTES FOR A DISTANCE OF 300 FEET TO THE NORTH LINE OF THE ALLEY ON THE EAST LINE OF WILLANA PARK 2ND ADDITION; THENCE RIGHT A DEFLECTION ANGLE OF 89 DEGREES AND 27 MINUTES, FOR A DISTANCE OF 353.3 FEET ALONG THE NORTH LINE OF WILLANA PARK 2ND ADDITION; THENCE RIGHT A DEFLECTION ANGLE OF 37 DEGREES AND 24 MINUTES FOR A DISTANCE OF 156.9 FEET; THENCE RIGHT A DEFLECTION ANGLE OF 52 DEGREES AND 39 MINUTES, FOR A DISTANCE OF 100.2 FEET TO THE NORTH LINE OF SAID ROSEDALE DRIVE; THENCE WESTERLY ALONG THE NORTH LINE OF SAID ROSEDALE DRIVE, A DISTANCE OF 144.9 FEET TO THE POINT OF BEGINNING.

THAT THE ACCOMPANYING PLAT IS A CORRECT DELINEATION OF SAID SURVEY DRAWN TO A SCALE OF 100 FEET TO AN INCH. THAT ALL DIMENSIONS ARE SHOWN IN FEET AND DECIMALS. THAT ALL BLOCK CORNERS ARE MARKED WITH 3/4" x 36" IRON RODS AND ALL OTHER CORNERS ARE MARKED WITH 5/8" x 18" IRON RODS, THAT THE BOUNDARY OF THE SUB-DIVISION IS MARKED WITH A HEAVY SOLID LINE.

WITNESS MY HAND AND SEAL
THIS 15TH DAY OF APRIL, 1962

Kenneth George Roberts
KENNETH GEORGE ROBERTS
SCOTTSBLUFF NEBRASKA
NEBRASKA REGISTERED LAND SURVEYOR L S 33

504

WILLANA PARK 4TH ADDITION LOTS 1 TO 10 INCLUSIVE.(CONTINUATION SHEET)

• DEDICATION •

WE, THE UNDERSIGNED, BEING THE OWNERS OF A PART OF THE WEST-HALF (W^{1/2}) OF THE SOUTHWEST QUARTER (SW^{1/4}) OF SECTION THIRTEEN (13) TOWNSHIP TWENTY TWO (22) NORTH, RANGE FIFTY-FIVE (55) WEST OF THE 6TH P.M. IN SCOTTS BLUFF COUNTY, NEBRASKA, HAVE CAUSED SAID LAND TO BE SURVEYED AND PLATTED AS LOTS ONE (1) TO TEN (10), INCLUSIVE, WILLANA PARK 4TH ADDITION TO THE CITY OF SCOTTSBLUFF, NEBRASKA, AS SHOWN, BY THE ACCOMPANYING PLAT AND SURVEYOR'S CERTIFICATE.

THE FOREGOING SUBDIVISION OF LOTS ONE (1) TO TEN (10), INCLUSIVE, WILLANA PARK 4TH ADDITION AND THE STREETS, AVENUES, AND ALLEYS ADJOINING AS APPEARS ON THIS PLAT IS MADE WITH THE FREE CONSENT AND IN ACCORDANCE WITH THE DESIRES OF THE UNDERSIGNED OWNERS.

WE HEREBY DEDICATE THE STREETS, AVENUES, AND ALLEYS DESIGNATED UPON AND REFERRED TO IN THE SAID PLAT TO THE USE AND BENEFIT OF THE PUBLIC AND FURTHER ANNEX AND MAKE SAID REAL ESTATE A PART OF THE CITY OF SCOTTSBLUFF, NEBRASKA.

DATED THIS 20TH DAY OF OCTOBER 1962.

C.D. Wildy
C. D. WILDY
Jewel M. Wildy
JEWEL M. WILDY
Craig Lana
CRAIG LANA
Betty G. Lana
BETTY G. LANA

• ACKNOWLEDGEMENT •

STATE OF NEBRASKA)
SCOTTSBLUFF, NEBRASKA)

ON THIS 20th DAY OF October, 1962, BEFORE ME, A NOTARY PUBLIC DULY COMMISSIONED AND QUALIFIED FOR AND RESIDING IN SAID COUNTY, PERSONALLY CAME C.D. WILDY AND JEWEL M. WILDY, HUSBAND AND WIFE; AND CRAIG LANA AND BETTY G. LANA, HUSBAND AND WIFE; BY ME KNOWN TO BE THE IDENTICAL PERSONS WHOSE NAMES ARE AFFIXED TO THE ABOVE DEDICATION AND ACKNOWLEDGE THE SAME TO BE THEIR VOLUNTARY ACTS AND DEEDS.

WITNESS MY HAND AND NOTARIAL SEAL THIS 20th DAY OF October, 1962.



L. E. White
NOTARY PUBLIC

• APPROVAL AND ACCEPTANCE •

THE ACCOMPANYING PLAT AND DEDICATION APPROVED AND ACCEPTED BY THE MAYOR AND CITY COUNCIL OF THE CITY OF SCOTTSBLUFF, NEBRASKA, BY RESOLUTION DULY PASSED THIS 22 DAY OF October, 1962.

William E. Nichol
MAYOR

ATTEST: A. L. Ferguson
CITY CLERK

NUMERICAL
GENERAL
TX REG.
INDEXED
95587
STATE OF NEBRASKA, } SS
SCOTTS BLUFF COUNTY }
Entered on Numerical Index and filed for record
the 16 day of NOVEMBER 1962 at 2:25
o'clock P.M. and recorded in Book 107 of
Deeds on Page 503
Alma L. Truax
REGISTER OF DEEDS
By _____ Deputy

95587

