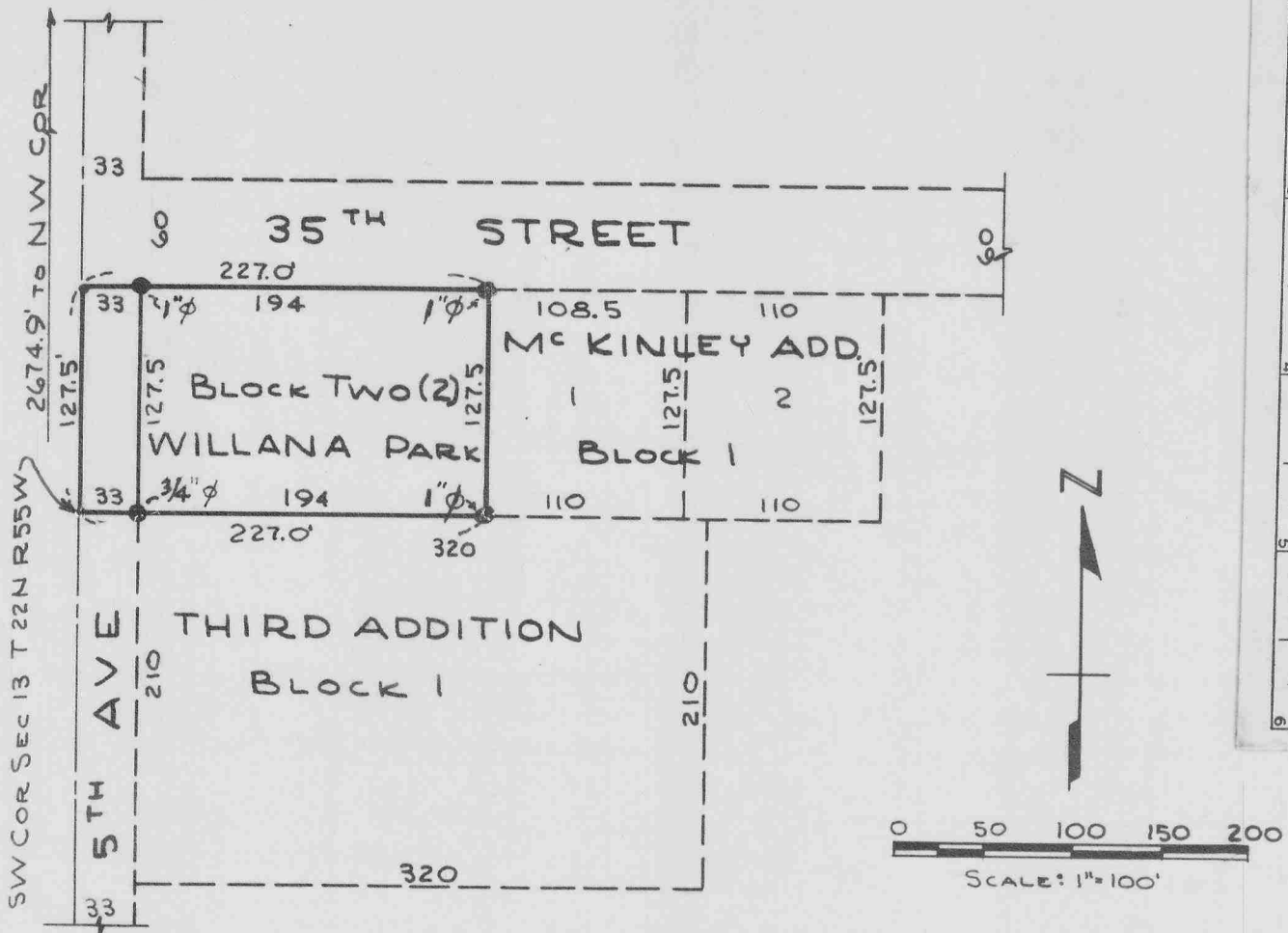


Note: See Lots 1+2 Subd Blk 2 (139-101)

488

94480

WILLANA PARK THIRD ADDITION BLOCK TWO (2)



SURVEYOR'S CERTIFICATE

STATE OF NEBRASKA) SS
SCOTT BLUFF COUNTY)

I, Kenneth George Roberts, A COMPETENT SURVEYOR OF SCOTT BLUFF COUNTY, NEBRASKA, HEREBY CERTIFY THAT I HAVE SURVEYED BLOCK TWO (2), WILLANA PARK THIRD ADDITION TO THE CITY OF SCOTT BLUFF, SCOTT BLUFF COUNTY, NEBRASKA, SITUATED ON A PART OF THE SOUTH-HALF OF THE NORTH-WEST QUARTER (S 1/2 NW 1/4) OF SECTION THIRTEEN (13), TOWNSHIP TWENTY TWO (22) NORTH, RANGE FIFTY FIVE (55) WEST OF THE 6TH P.M. IN SCOTT BLUFF COUNTY, NEBRASKA; MORE PARTICULARLY DESCRIBED AS FOLLOWS:

BEGINNING AT A POINT ON THE SOUTH-WEST CORNER OF THE NW 1/4 OF SAID SECTION 13; THENCE EAST ALONG THE SOUTH LINE OF SAID NW 1/4 FOR A DISTANCE OF 227 FEET; THENCE NORTH AND PARALLEL WITH THE WEST LINE OF SAID NW 1/4, FOR A DISTANCE OF 127.5 FEET; THENCE WEST AND PARALLEL WITH THE SOUTH LINE OF SAID NW 1/4, FOR A DISTANCE OF 227 FEET TO THE WEST LINE OF SAID NW 1/4; THENCE SOUTH ALONG THE WEST LINE OF SAID NW 1/4, FOR A DISTANCE OF 127.5 FEET TO THE POINT OF BEGINNING.

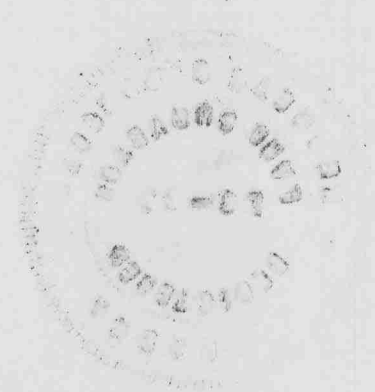
THAT THE ACCOMPANYING PLAT IS A CORRECT DELINEATION OF SAID SURVEY DRAWN TO A SCALE OF 100 FEET TO AN INCH.

THAT ALL DIMENSIONS ARE SHOWN IN FEET AND DECIMAL.

THAT IRON RODS ARE DRIVEN WELL INTO THE GROUND AT ALL CORNERS OF THE BLOCK.

WITNESS MY HAND AND SEAL THIS 8th DAY OF July 1962.

Kenneth George Roberts
Nebraska Registered Land Surveyor L.S. 33



o DEDICATION o

WE, THE UNDERSIGNED, BEING THE OWNERS OF THAT PART OF THE S 1/2 NW 1/4 SEC 13 TN R 55 W OF THE 6 TH PM, IN SCOTTS BLUFF COUNTY, NEBRASKA, HAVE CAUSED SAID REAL ESTATE TO BE SURVEYED AND PLATTED AS BLOCK TWO (2) OF WILLANA PARK THIRD ADDITION TO THE CITY OF SCOTTSBLUFF, NEBRASKA, AS SHOWN BY THE ACCOMPANYING PLAT AND SURVEYOR'S CERTIFICATE.

THE ABOVE AND FOREGOING SUBDIVISION OF BLOCK TWO, WILLANA PARK THIRD ADDITION AND THE STREETS, AVENUES AND ALLEYS ADJOINING, AS APPEARS ON THIS PLAT IS MADE WITH FREE CONSENT AND IN ACCORDANCE WITH THE DESIRE OF THE UNDERSIGNED OWNERS.

WE HEREBY DEDICATE THE STREETS, AVENUES, AND ALLEYS DESIGNATED UPON AND REFERRED TO IN THE SAID PLAT TO THE USE AND BENEFIT OF THE PUBLIC, AND FURTHER ANNEX AND MAKE SAID REAL ESTATE A PART OF THE CITY OF SCOTTSBLUFF, NEBRASKA.

DATED THIS 8 TH DAY OF JULY 1962.

Craig Lana
CRAIG LANA

Betty G. Lana
BETTY G. LANA

o ACKNOWLEDGEMENT o

STATE OF NEBRASKA)
SCOTTSBLUFF, NEBRASKA)

ON THIS 8 TH DAY OF July, 1962, BEFORE ME, A NOTARY PUBLIC DULY COMMISSIONED AND QUALIFIED FOR AND RESIDING IN SAID COUNTY, PERSONALLY CAME CRAIG LANA AND BETTY G LANA, HUSBAND AND WIFE; BY ME KNOWN TO BE THE IDENTICAL PERSONS WHOSE NAMES ARE AFFIXED TO THE ABOVE DEDICATION AND ACKNOWLEDGE THE SAME TO BE THEIR VOLUNTARY ACTS AND DEEDS.

WITNESS MY HAND AND NOTARIAL SEAL THIS 8 TH DAY OF July, 1962.

Kenneth H Roberts
NOTARY PUBLIC

MY COMMISSION EXPIRES: 27 February 1963



o APPROVAL AND ACCEPTANCE o

THE ACCOMPANYING PLAT AND DEDICATION APPROVED AND ACCEPTED BY THE MAYOR AND CITY COUNCIL OF THE CITY OF SCOTTSBLUFF, NEBRASKA, BY RESOLUTION DULY PASSED THIS 23 DAY OF JULY, 1962.

William E Nichol
MAYOR

ATTEST: Ed Schwaned
CITY CLERK

94480
STATE OF NEBRASKA } SS
SCOTTS BLUFF COUNTY }
Entered on Numerical Index and filed for record
the 25 day of July 1962 at 3:22
o'clock P.M. and recorded in Book 106 of
Deeds on Page 488
Alma L. Isaac
REGISTER OF DEEDS
By _____ Deputy



94480