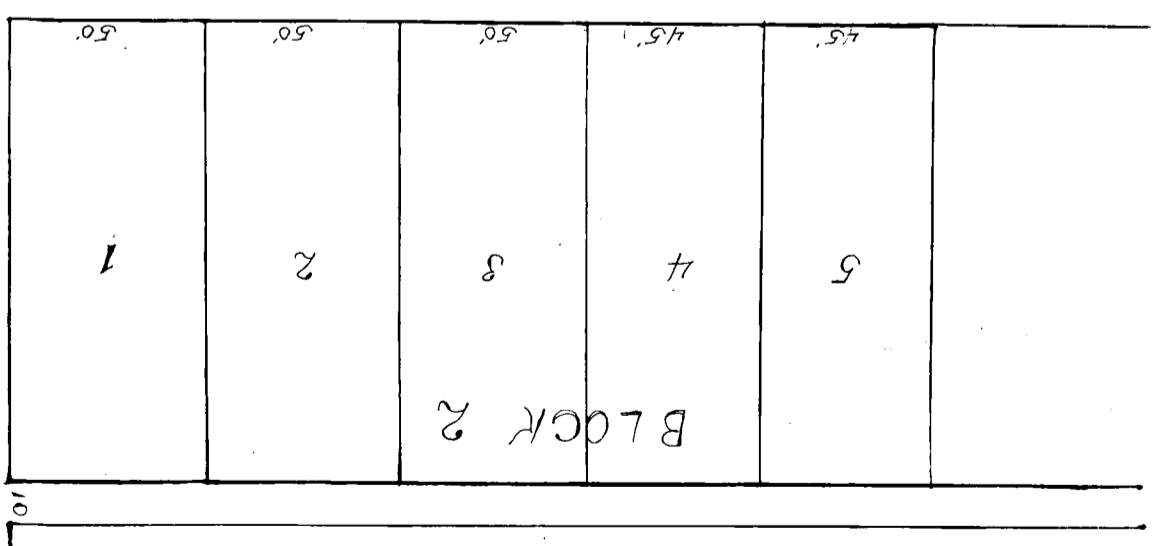
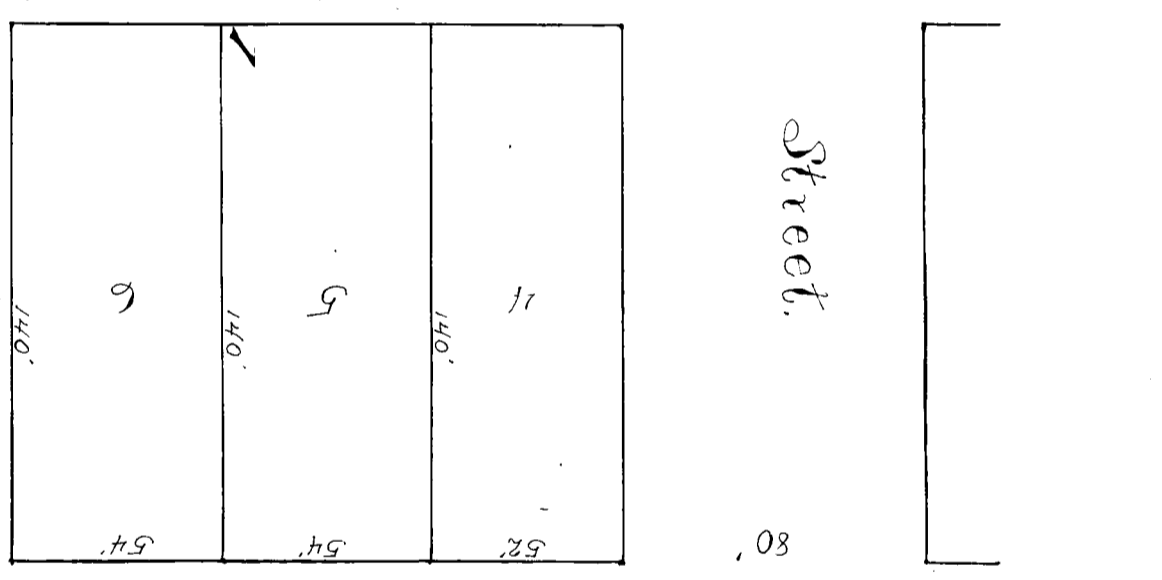


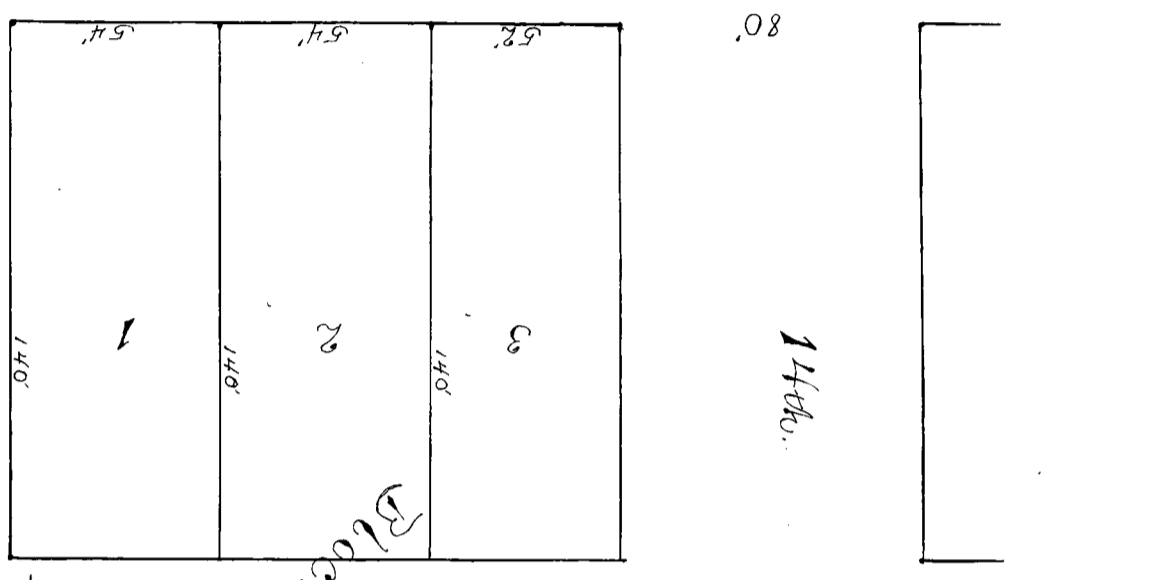
Plat and Dedication
of
Court Place



Street



Street



Street

Block 28
(First Addition to Gering)

Court House Block

I HEREBY CERTIFY that I surveyed and sub-divided the plat of land above described, being a part of the SW $\frac{1}{4}$ and the SE $\frac{1}{4}$ of Section 2 in Township 21 N. of Range 55 W. in Gering, Nebraska, into Blocks, Lots, Streets and Alleys. The corners of the Blocks are marked with Oak stakes one foot in length driven into the ground even with the top thereof and the outside corners of each lot is marked by a pine stake 1x1 $\frac{1}{2}$ inches by 12 inches in length driven in even with the ground; the length and width of each lot and width of each street and alley is noted on said plat in ink; said plat consists of two blocks numbered One and Two; Block Number One contains six lots numbered from 1 to 6 inclusive and Block Number Two contains Five Lots numbered from 1 to 5 inclusive.

IN WITNESS WHEREOF, I have hereunto set my hand this 15th day of April, A. D. 1915.

O. W. Gardner,
Surveyor.