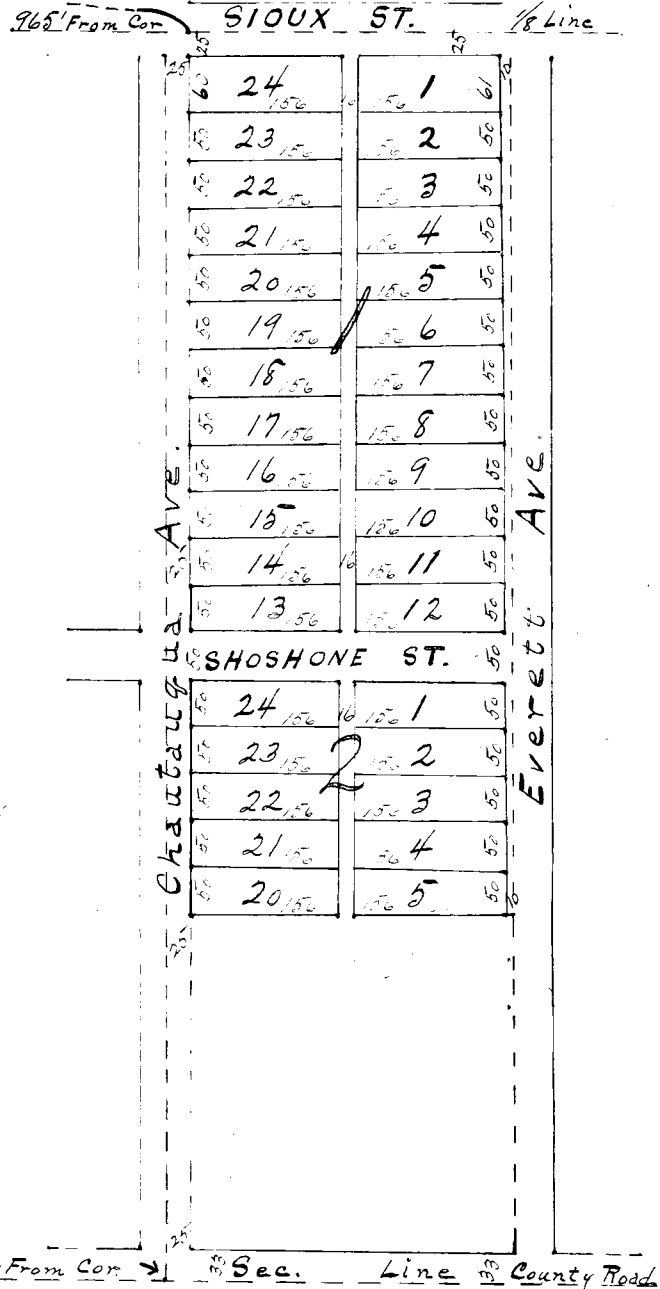


DEED RECORD P.

18782-KLOPP & BARRETT CO., Printing, Lithographing and County Supplies, Omaha Mo. H.

PLAT
of the
ASSOCIATION HEIGHTS
Scottsbluff Nebr.



State of Nebraska,)
) SS:
Scotts Bluff County.)

Entered on Numerical Index and Filed for record the 24th day of January, A.D.1911, at 2 o'clock P.M., and recorded in Book P of Deeds, on Page 285.

M. H. McHenry, County Clerk.

I hereby certify that on the 13th 14th & 15th days of December A.D.1910, I surveyed Association Heights Addition to the town of Scottsbluff, Nebraska, situated on a part of the S.W. 1/4 Sec. 24 T. 22 N. R.55 W. of 6th P.M.. Which is clearly shown by the foregoing plats, which is a correct delination of said survey drawn to a scale of 200 ft to 1 inch. The streets are laid out parallell to the South and West sides of Section. The Lots and Streets are marked with pine 2X2 stakes driven well into the ground. Each lot & block bears its own number and distances to corners given.

Witness my hand 16th day of December, 1910.

C. E. Scriven, Co. Surveyor.

This certifies that the North Platte Valley Chautauqua Association a corporation of the State of Nebraska, is the owner in fee of that part of the S.W. 1/4 of Sec.24,T.22 N.R.55 West of 6th P.M. upon which Association Heights addition to Scottsbluff is located, as shown by the foregoing plat and Surveyor's certificate.

That said owner has caused this said land to be surveyed and platted as said Association Heights addition to Scottsbluff as indicated above, that the avenues, streets and alleys shown on foregoing plat are hereby dedicated to Public use.

In testimony whereof the said North Platte Valley Chautauqua Association has caused this instrument to be signed by its president and countersigned by its Secretary, and the corporate seal of said company to be hereunto affixed this 20 day of January, 1911.

Executed in Duplicate
Countersigned:
G. L. Shumway, Secretary.
Witness signature of President.
E. M. Sawyer.

North Platte Valley Chautauqua Association,
(Signed) by H. T. Bowen, President and presiding officer
of Board of Directors.
NORTH PLATTE VALLEY
CHAUTAUQUA ASSOCIATION,
CORPORATE SEAL.