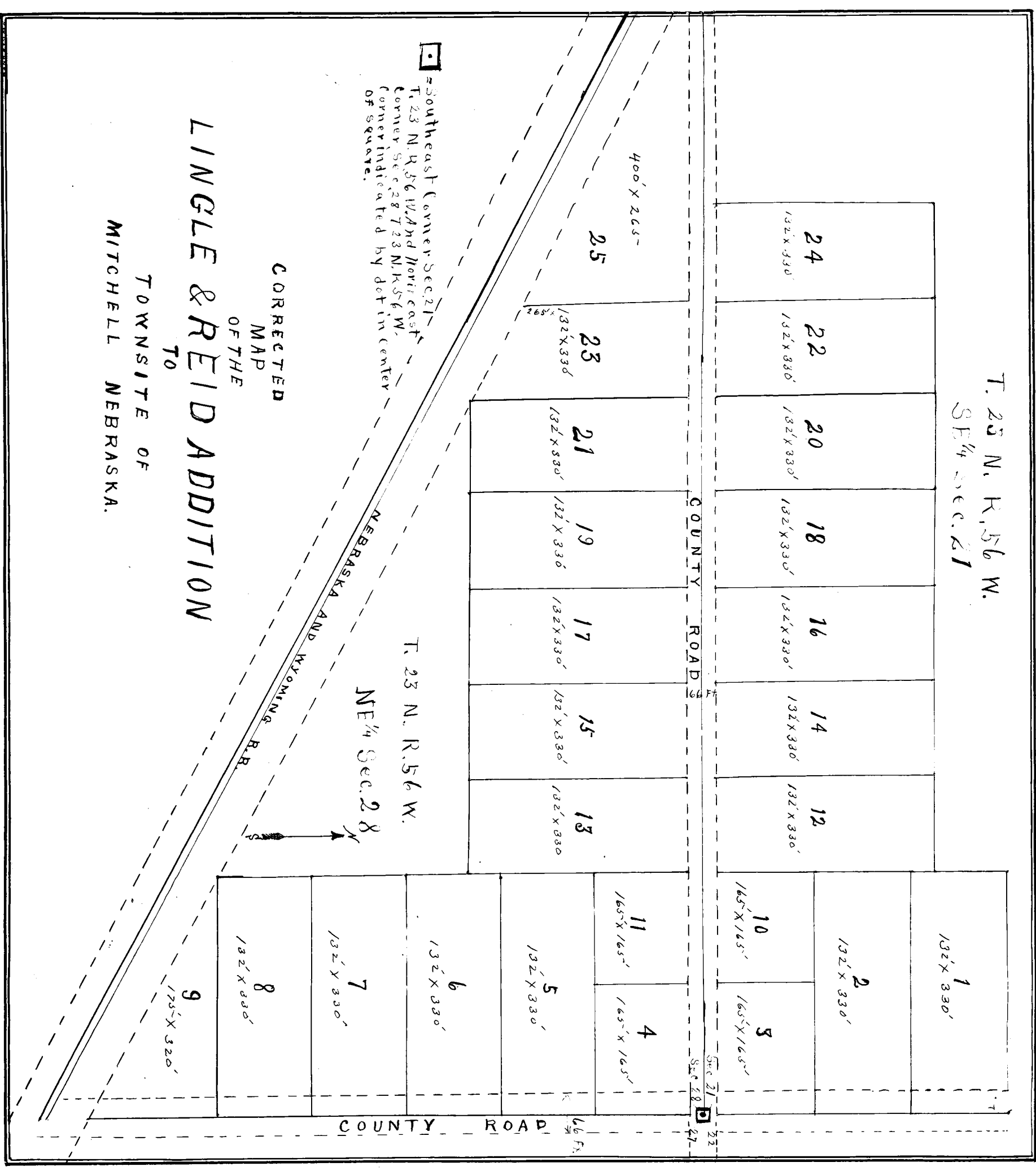


DEED RECORD.



State of Nebraska,)
) SS:
 Scotts Bluff County.) I, C. N. Wright, being first duly sworn, on oath depose and say that I am of the Attorneys of the Rawhide Ranch Co., proprietors of the Lingle & Reid Addition to the Town of Mitchell, Nebraska; that the above and foregoing map is a true and corrected plat of said addition; the original of which was filed for record on the 15th day of August, 1905, in the office of the County Clerk of Scotts Bluff County, and duly recorded in Book K of Deeds at page 456 thereof; that the corrections made in filing the above and foregoing map are made for the purpose of more definitely showing the corners and lines within and pertaining to the said addition, and all corrections made thereon are shown in red ink.
 Dated this 21st day of February, 1906.

(SEAL) Subscribed and sworn to before me this day and date last above written.
 My Commission Expires Febr. 11, 1907.

C. N. Wright.
 O. W. Gardner, Notary Public.

Corrected Map of the
 Lingle & Reid Addition
 to
 Townsite of Mitchell, Nebraska.

State of Nebraska County of Scotts Bluff, SS.
 Entered on Numerical Index and filed for record the 21st day
 of February 1906 at 5 o'clock P.M. and recorded in Book K
 of Deeds at page 600.

Gas McKimley
 County Clerk.