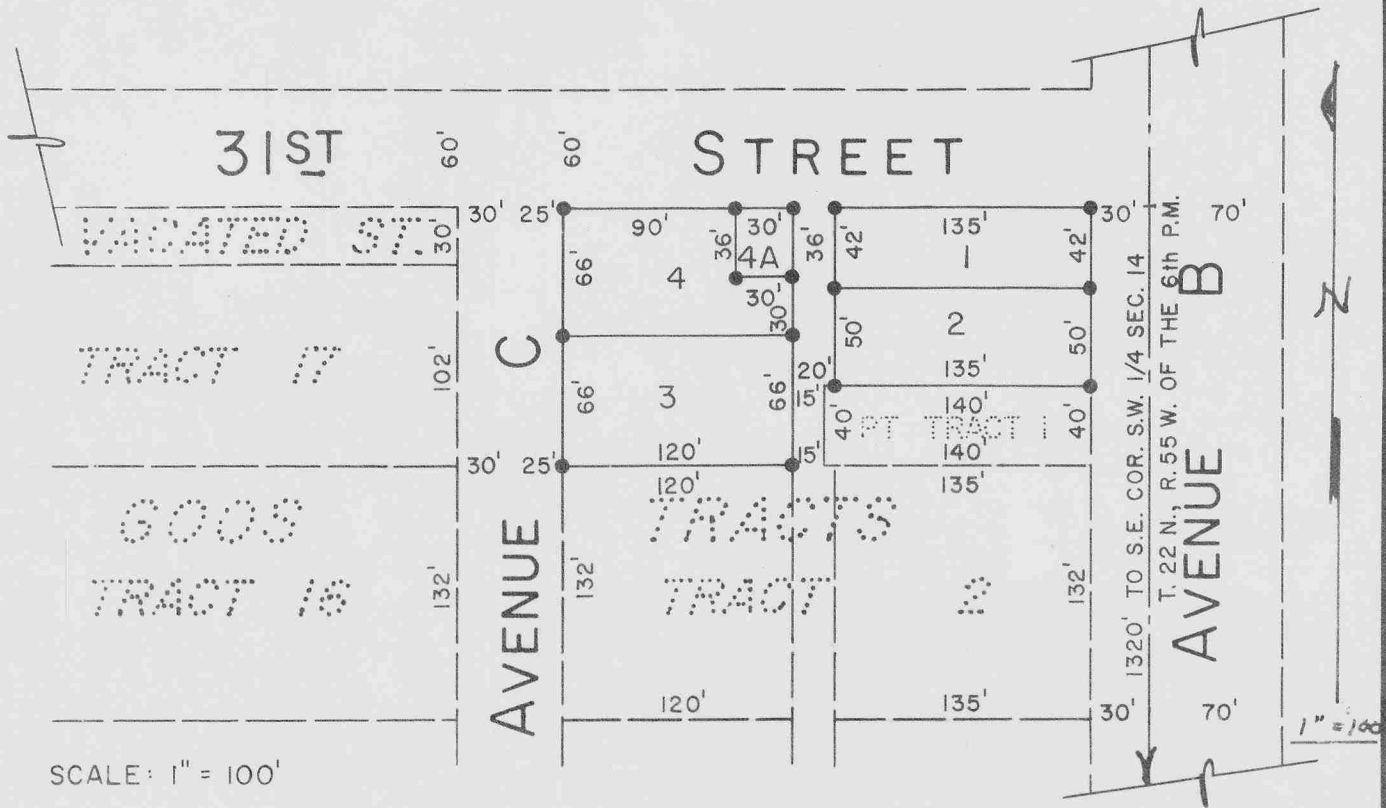


SUBDIVISION OF A PART OF TRACT ONE (1), GOOS TRACTS AND PART OF VACATED 31ST ST.



SURVEYOR'S CERTIFICATE

STATE OF NEBRASKA } ss
SCOTTS BLUFF COUNTY }

I, Kenneth George Roberts, a competent surveyor, of Scotts Bluff County, Nebraska, hereby certify that I have accurately surveyed the SUBDIVISION OF A PART OF TRACT ONE (1), GOOS TRACTS AND A PART OF VACATED 31st STREET, an addition to the City of Scottsbluff, Scotts Bluff County, Nebraska; situated in the Southwest Quarter (SW 1/4) of Section Fourteen (14), Township Twenty-two (22), North, Range Fifty-five (55), West of the 6th P.M.; more particularly described as follows: Beginning at a point on the Northeast Corner of tract Number One (1), of said Goos Tracts; thence South along the East line of said Tract One (1), a distance of 62 feet; thence West and parallel with the North line of said Tract One (1), a distance of 140 feet; thence South and parallel with the East line of said Tract One (1), a distance of 40 feet; thence West and parallel with the North line of said Tract One (1), a distance of 135 feet; thence North and parallel with the East line of said Tract One (1), extended North, a distance of 132 feet; thence East and parallel with the North line of said Tract One (1), a distance of 275 feet, to the East line of said Tract One (1), extended North; thence South along the East line of said Tract One (1), extended North, a distance of 30 feet, to the point of beginning. That the above plat is a correct delineation of said survey drawn to a scale of one inch equals one hundred feet. All dimensions are shown in feet and decimals. Iron reinforcing rods are driven firmly into the ground at the corners of each lot. Each lot bears its own identifying number.

WITNESS MY HAND AND SEAL this 28th
day of June, 1958

Kenneth George Roberts
NEBRASKA REGISTERED LAND SURVEYOR L.S. 33
Kenneth George Roberts, Scottsbluff, Nebraska



DEDICATION

We, the undersigned, being the owners of a part of Tract One (I), Goos Tracts, and a part of vacated 31st Street, all situated in the S.W. 1/4 of Section 14, T. 22 N., R. 55 W. of the 6th P.M., in the City of Scottsbluff, Scotts Bluff County, Nebraska; have caused said land to be surveyed and platted as "SUBDIVISION OF A PART OF TRACT ONE (I), GOOS TRACTS, AND A PART OF VACATED 31st STREET", an addition to the City of Scottsbluff, Nebraska, as shown by the adjoining plat and described in the Surveyor's Certificate. We hereby dedicate the streets, alleys, and avenues, designated upon and referred to in the said plat, to the use and benefit of the public and we further hereby annex and make said real estate, so shown on said plat, a part of the City of Scottsbluff, Nebraska, to be known as SUBDIVISION OF A PART OF TRACT ONE (I), GOOS TRACTS, AND A PART OF VACATED 31st STREET, an addition to the City of Scottsbluff, Nebraska.

Dated this 19th day of July 1958

Bernice L. Townsend
Bert R. Townsend

ACKNOWLEDGEMENT

STATE OF NEBRASKA }
SCOTTS BLUFF COUNTY } SS

On this 19th day of July 1958, before me, a Notary Public in and for said County, personally appeared Bert R. Townsend and Bernice L. Townsend, husband and wife, to me known to be the identical persons whose names are affixed to the foregoing plat and dedication, and acknowledged the execution of the same to be their voluntary act and deed.

WITNESS MY HAND AND NOTARIAL SEAL the day and year last above written.

J. P. Ferguson
NOTARY PUBLIC

My Commission Expires 13 Sept 1961

ACCEPTANCE

The accompanying plat and dedication approved and accepted by the Mayor and City Council of the City of Scottsbluff, Nebraska, by resolution duly passed this 28 day of July 1958.

W. G. Walter
MAYOR

Attest: Ch. Schwaner
CITY CLERK

STATE OF NEBRASKA, }
SCOTTS BLUFF COUNTY } SS
Entered on Numerical Index and filed for record
the 1 day of August 1958 at 11:00
o'clock A.M., and recorded in Book 92 of
Deeds on Page 564
Alma L. Murray
REGISTER OF DEEDS
By _____ Deputy