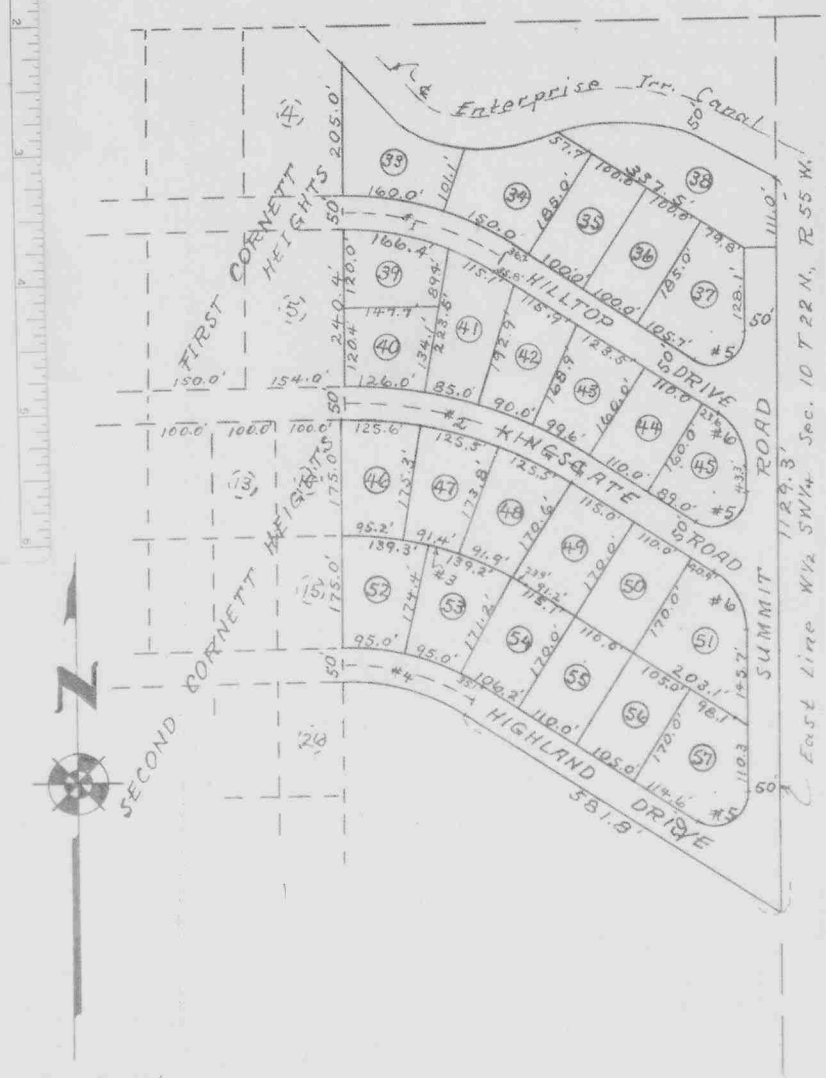


NUMERICAL GENERAL TAX REG. PICTURED

78612

STATE OF NEBRASKA, ss SCOTTS BLUFF COUNTY ss Entered on Numerical Index and filed for record the 15 day of July, 1958 at 7:00 o'clock P.M. and recorded in Book 72 of Deeds on Page 461 Alma R. Foss REGISTER OF DEEDS By Wella D. Burtlett Deputy

THIRD CORNETT HEIGHTS



Curve Data

#1 Δ 33° 10' R 448.7'	#2 Δ 33° 08' R 668.5'	#3 Δ 33° 08' R 523.0'
#4 Δ 33° 08' R 364.2'	#5 Δ 122° 12' R 50.0'	#6 Δ 57° 48' R 100.0'

THIS IS TO CERTIFY:- That I surveyed THIRD CORNETT HEIGHTS, on part of the W 1/2 SW 1/4 Section 10, Township 22 North Range 55 West of the 6th Principal Meridian, Scotts Bluff County, Nebraska, more particularly described as follows:-

Beginning at the Northeast corner of Tract 26 Second Cornett Heights;

Thence North along the East line of Second Cornett Heights, for a distance of 400.0 feet, to the Northeast corner of Tract 14 Second Cornett Heights;

Thence N. 89° 08' E. for a distance of 4.0 feet to the Southeast corner of First Cornett Heights;

Thence North along the East line of First Cornett Heights for a distance of 545.4 feet, to the east corner of Tract 4 at the Canal Bank;

Thence along the southerly right-of-way line of the Enterprise Irrigation District Canal, said line based on 50.0 feet measured at right angles and/or radially from the centerline of the said Canal as constructed and now existing, S. 40° 46' E. for a distance of 89.8 feet;

Thence on a curve to the left, along said canal right-of-way, central angle 60° 34', Radius 190.0 feet, for a distance of 200.8 feet;

Thence N. 78° 40' E. for a distance of 157.0 feet;

Thence continuing along said canal right-of-way line, on a curve to the right, central angle 41° 28', Radius 290.0 feet, for a distance of 209.7 feet;

Thence S. 59° 52' E. for a distance of 91.7 feet, to the point of intersection of Canal right-of-way line and the east line W 1/2 SW 1/4;

Thence S. 0° 03 3/4' W. along said east line W 1/2 SW 1/4, for a distance of 1129.3 feet;

Thence N. 57° 44' W. for a distance of 581.8 feet;

Thence on a curve to the left, central angle 33° 08', Radius 339.2 feet, for a distance of 196.1 feet;

Thence S. 89° 08' W. for a distance of 0.4 ft. to the point of beginning.

That this plat is a correct delineation of said survey, drawn to the scale of 200 feet to the inch.

Tract corners are marked with 3/8" Iron Rods in lengths of 34" and 48".

Each Tract bears its own numbers, and dimensions are shown in feet and decimals. WITNESS my hand this 14th day of July, 1958.

KNOW ALL MEN BY THESE PRESENTS:-

That the undersigned William E. Cornett and Gladys C. Cornett, husband and wife, are the owners of that part of the W 1/2 SW 1/4 Section 10, Township 22 North, Range 55 West of the 6th P.M. Scotts Bluff County, Nebraska, upon which THIRD CORNETT HEIGHTS is located, and that said owners have caused said land to be surveyed and platted as THIRD CORNETT HEIGHTS, as shown by the above plat and surveyor's certificate.

We hereby dedicate the roads, drives, lanes or streets as shown on the plat, to the use and benefit of the public.

IN WITNESS WHEREOF the said owners have executed these presents this 14th day of July, 1958.

William E. Cornett Gladys C. Cornett

STATE OF NEBRASKA } ss.
SCOTTS BLUFF COUNTY }

On this 14th day of July, 1958, before me, the undersigned, a Notary Public in and for said County, personally came William E. Cornett and Gladys C. Cornett, husband and wife, to me known to be the identical persons whose names are affixed to the foregoing plat and dedication, and acknowledged the same and the execution thereof to be their voluntary act and deed.

IN TESTIMONY WHEREOF, I have hereto set my hand and affixed my seal the day and year last above written.

Calvin H. Copius
NOTARY PUBLIC

My Commission Expires January 3rd 1959

