

08

See Lots A+B, Replat of Vacated Lots 2, 3+4
Replat of Baltes Add - 189-312

NOTE: See Lot 1, Bjorling Addition, a plat of Vacated Lot 1, Replat of Baltes Addition & part of SE 1/4 SE 1/4 15-22-55, Deed 207-383

308

REPLAT
OF
BALTES ADDITION

DEDICATION

We, the undersigned, being the owners of that part of the Southeast Quarter of the Southeast Quarter (S.E. 1/4 S.E. 1/4) of Section Fifteen (15), Township Twenty-two (22), North, Range Fifty-five (55) West of the 6th P.M., Scotts Bluff County, Nebraska, on which the land, described in the following Surveyor's Certificate, is located, do hereby certify that we have caused said land to be surveyed and platted as the REPLAT OF BALTES ADDITION to the City of Scottsbluff, Nebraska, as shown by the accompanying plat.

We hereby annex to, and make a part of, the City of Scottsbluff, Nebraska, those parts of the said land not previously made a part of said City; and we hereby dedicate, to the use and benefit of the public, such parts of Avenue I and 27th Street as have not previously been so dedicated.

Dated this 26th day of May, 1958

Lawrence Baltes OWNER
Lydia Baltes OWNER

ACKNOWLEDGEMENT

STATE OF NEBRASKA }
SCOTTS BLUFF COUNTY } ss

Before me, on this 26th day of May, 1958, appeared Laurence Baltes and Lydia Baltes, husband and wife, to me known to be the identical persons whose names are subscribed to the foregoing instrument, and they acknowledged the execution thereof to be their voluntary and willful deed.

My Commission Expires 13 Sept 1961

H. L. Ferguson NOTARY PUBLIC

SURVEYOR'S CERTIFICATE

TO CERTIFY: That the undersigned, O. M. Finley, surveyed the REPLAT OF BALTES ADDITION to the City of Scottsbluff, Nebraska, located on a part of the S.E. 1/4 S.E. 1/4 of Section 15, T. 22 N., R. 55 W. of the 6th P.M., Scotts Bluff County, Nebraska, the boundaries of which REPLAT are as follows: Beginning at a point which is North 33 feet and S. 89° 32' 1/2" W. 106 feet from the Southeast corner of said S.E. 1/4 S.E. 1/4;

- Thence, from said point of beginning, continuing along a line 33 feet North of, and parallel with, the South line of the said S.E. 1/4 S.E. 1/4, for 204 feet;
- Thence North, parallel with East line of said S.E. 1/4 S.E. 1/4 for 383 feet;
- Thence N. 89° 32' 1/2" E., parallel with the South line of said S.E. 1/4 S.E. 1/4 for 100.89 feet;
- Thence North, parallel with the East line of the said S.E. 1/4 S.E. 1/4 for 389 feet;
- Thence N. 89° 32' 1/2" E., parallel with the South line of said S.E. 1/4 S.E. 1/4 for 162 feet; to intersect the West Right-of-way line of State Highway No. 87;
- Thence S. 00° 05' E., along said Right-of-way line, for 705.39 feet;
- Thence S. 41° 43' W., along said Right-of-way line, for 89.9 feet to the point of beginning, comprising an area of 3.72 Acres.

That the plat is a correct delineation of said survey, drawn to a scale of 100 feet the inch. That iron rods 5/8" x 48" are driven nearly flush with the ground at the corners of each lot, and that each lot bears its own number.

WITNESS MY HAND and SURVEYOR'S SEAL this 26th day of May, 1958.

O. M. Finley COUNTY SURVEYOR

ACCEPTANCE

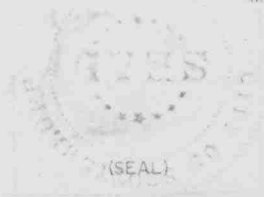
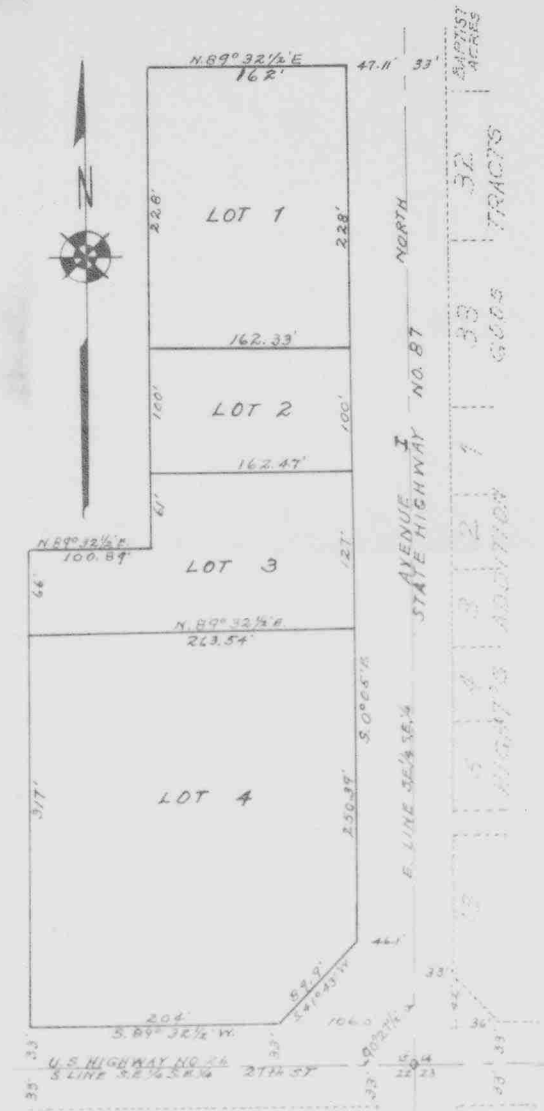
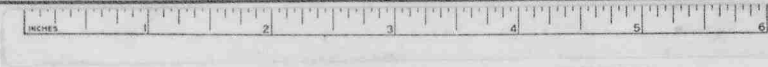
The above plat approved and accepted by the Mayor and City Council of Scottsbluff, Nebraska, by resolution, duly passed this 9th day of June 1958.

Attest: A. D. Schwanz CITY CLERK

W. G. Walter MAYOR

Approved by the Zoning Board of the City of Scottsbluff, Nebraska, June 9, 1958.

F. R. Cannon CHAIRMAN



STATE OF NEBRASKA }
SCOTTS BLUFF COUNTY } ss
Entered on Numerical Index and filed for record
the 16 day of June 1958 at 2:08
o'clock P.M. and recorded in Book 22 of
Series on Page 388
Alma J. ...
REGISTER OF DEEDS
By _____ Deputy