

ANNEXATION OF LOTS 1, 2, 3, & 4 BLOCK ONE NORTHEAST ADDITION

Scale: 1" = 100'

M. L. Garber

SURVEYOR'S CERTIFICATE

STATE OF NEBRASKA
SCOTTS BLUFF COUNTY } SS
Entered on General Index and filed for record
Book 24 of DECEMBER 1957 at 10:17
A.M. and recorded in Book 70 of
Block 20 Page 626
By John S. Small Deputy
Register of Deeds

I, Marvin L. Garber, a competent surveyor of Scotts Bluff County, Nebraska, hereby certify that on the 3rd day of August, 1953, I surveyed BLOCK ONE, NORTHEAST ADDITION to the City of Scottsbluff, Nebraska, a part of the SW 1/4 NW 1/4 Section 24, Township 22 North Range 55 West of the 6th Principal Meridian, Scotts Bluff County, Nebraska, and more particularly described as follows:

Beginning at a point which is N 0° 26' 1/2" W 363.0 feet and N 89° 33' 1/2" E 330.0 feet from the SW corner SW 1/4 NW 1/4 said section 24, which corner is marked by an "X" inscribed in the concrete paving;

Thence N 0° 26' 1/2" W on a line parallel with and 330 feet east of the west line said SW 1/4 NW 1/4 for a distance of 390.0 feet;

Thence N 89° 33' 1/2" E for a distance of 327.3 feet;

Thence S 0° 18' 1/2" E for a distance of 390.0 feet;

Thence S 89° 33' 1/2" W for a distance of 326.9 feet to the point of beginning;

That the accompanying plat is a correct delineation of said survey drawn to a scale of one inch equals one hundred feet, iron pins are driven firmly into the ground at each lot corner. Each lot bears its identifying number.

Marvin L. Garber

DEDICATION

We, the undersigned, being the owners of a part of the SW 1/4 NW 1/4 Section 24, T22N R55W of the 6th PM, Scotts Bluff County, Nebraska, on which the NORTHEAST ADDITION is located have caused said land to be surveyed and platted as NORTHEAST ADDITION to the City of Scottsbluff, Nebraska, as shown by the accompanying plat and surveyor's certificate. We hereby dedicate the streets, avenues, and alleys designated upon and referred to in the said plat to the use and benefit of the public; and hereby annex and make said real estate a part of the City of Scottsbluff, Scotts Bluff County, Nebraska.

William R. Frank

ACKNOWLEDGEMENT

STATE OF NEBRASKA } ss.
SCOTTS BLUFF COUNTY } ss.
On this 3rd day of August 1953 before me a notary public duly commissioned and qualified for and residing in said county, personally came Patricia Faber, formerly Patricia Frank, and William R. Frank, sister and brother, to me known to be the lawful persons whose names are affixed to the above dedication and acknowledge the execution thereof to be their voluntary act and deed.

IN TESTIMONY WHEREOF, I have hereunto set my hand and Notarial Seal the day and year last written.

My commission expires 13th day of September 1955.

Patricia Faber
Notary Public

ZONING

Examined and approved for R-1 Residential District this 10th day of December 1957.

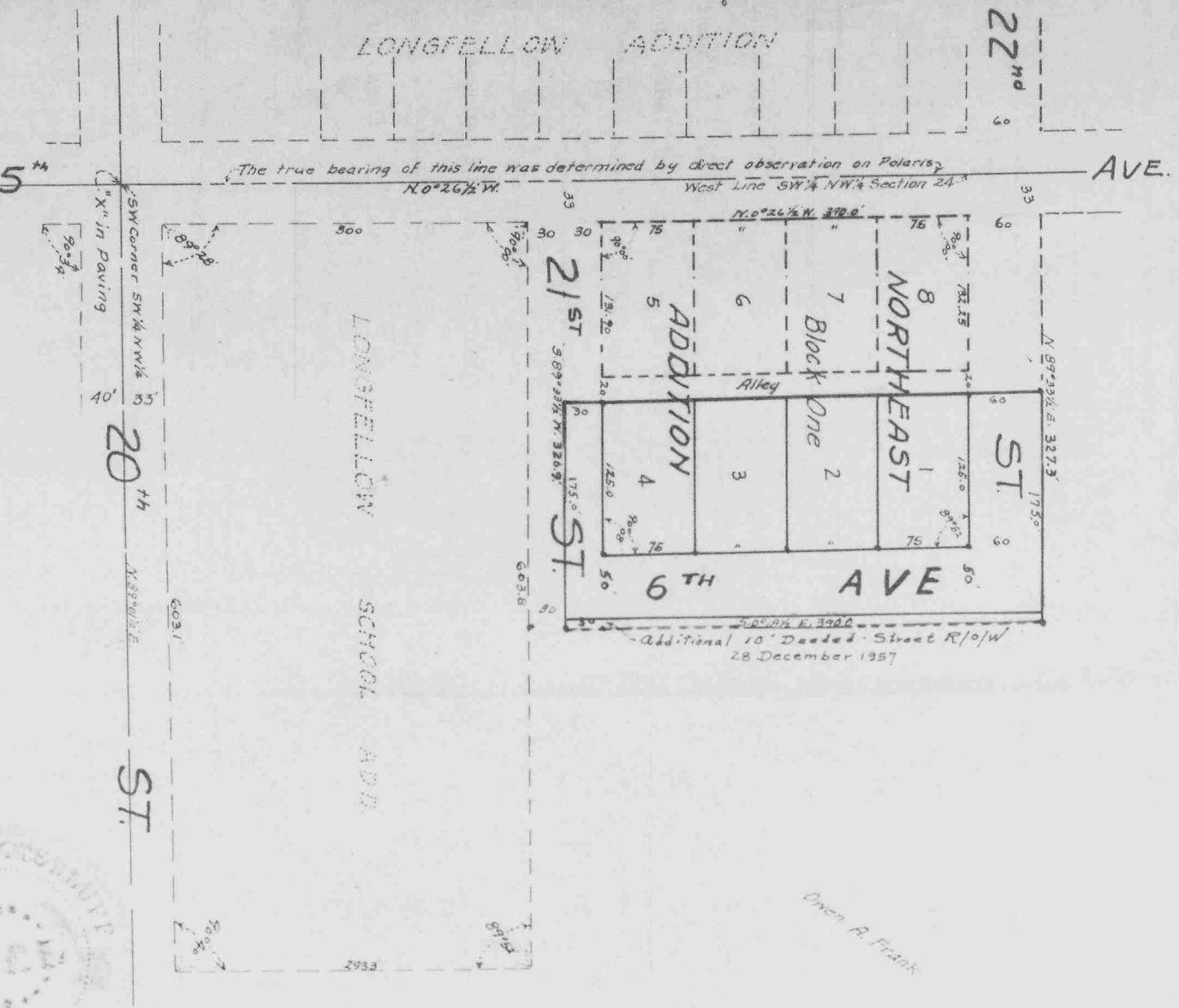
W. C. Swartzel
Chairman, Board of Adjustments.

ACCEPTANCE by CITY of SCOTTSBLUFF

The accompanying plat and dedication approved and accepted by the Mayor and City Council of the City of Scottsbluff, Nebraska, by resolution duly passed this 9th day of December 1957.

ATTEST: W. C. Swartzel
City Clerk

W. C. Swartzel
Mayor



All bearings shown on this plat are referred to the true meridian.
Scale: 1" = 100'

26732

26735