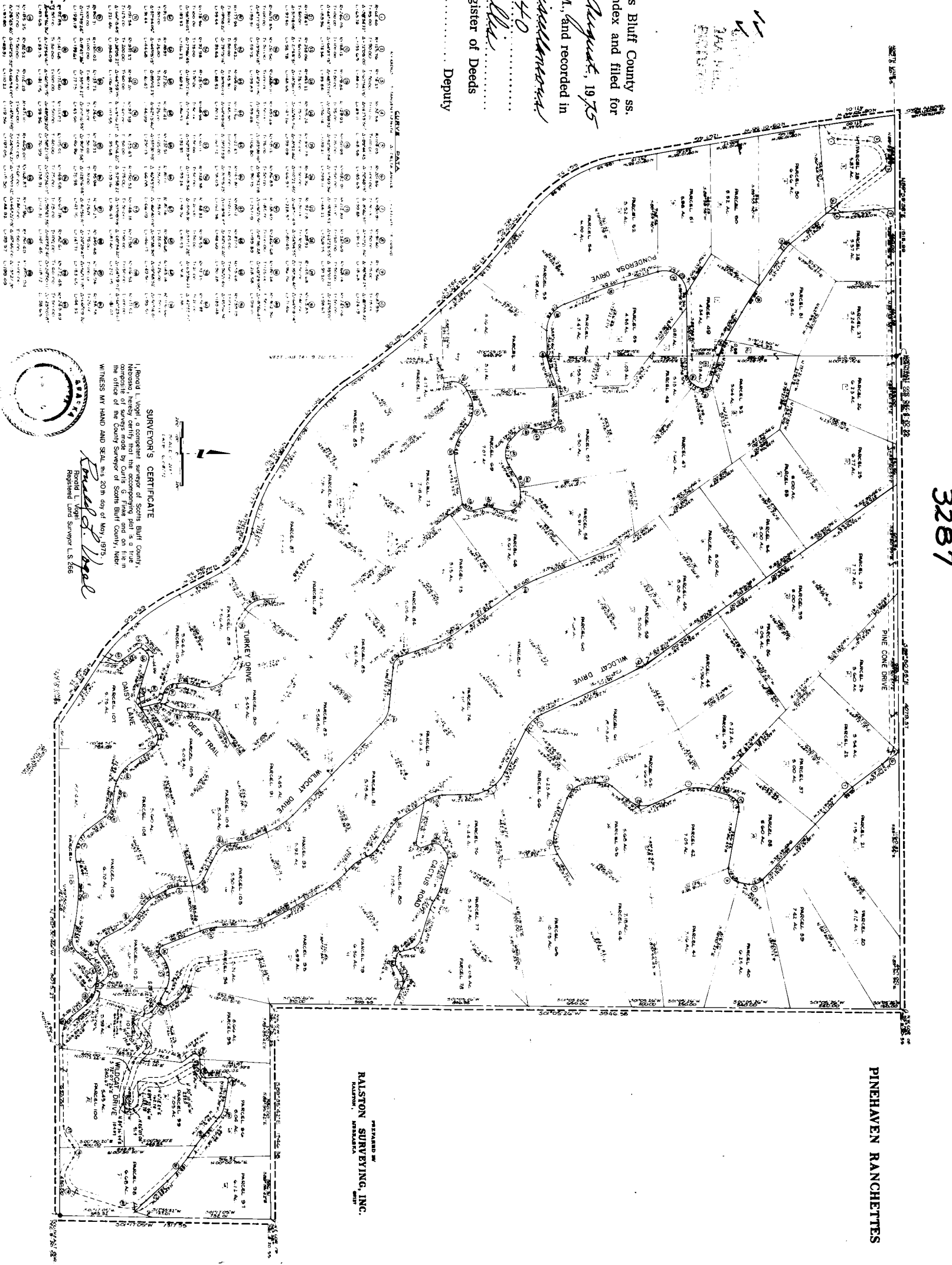


Note: See Fairingh Subd. 181-409
a subd. lots 61+66

3287

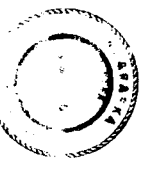
State of Nebraska, Scotts Bluff County ss.
Entered in Numerical Index and filed for
record the 18. day of August, 1975
at 3:25 o'clock P. M., and recorded in
Book 89 of *Miscellaneous*
on page 140
Gregory J. Kalle
Register of Deeds
By _____ Deputy

3287



SURVEYOR'S CERTIFICATE
I, Ronald L. Vogel, a competent Surveyor of Scotts Bluff County, Nebraska, do hereby certify that the above and foregoing is a true and correct copy of the original Survey made by Curtis G. Forns and on file in the office of the County Surveyor of Scotts Bluff County, Nebraska.
WITNESS MY HAND AND SEAL this 20th day of May, 1975.
Ronald L. Vogel
Registered Land Surveyor U.S. 266

PREPARED BY
RALSTON SURVEYING, INC.
RALSTON, NEBRASKA



140