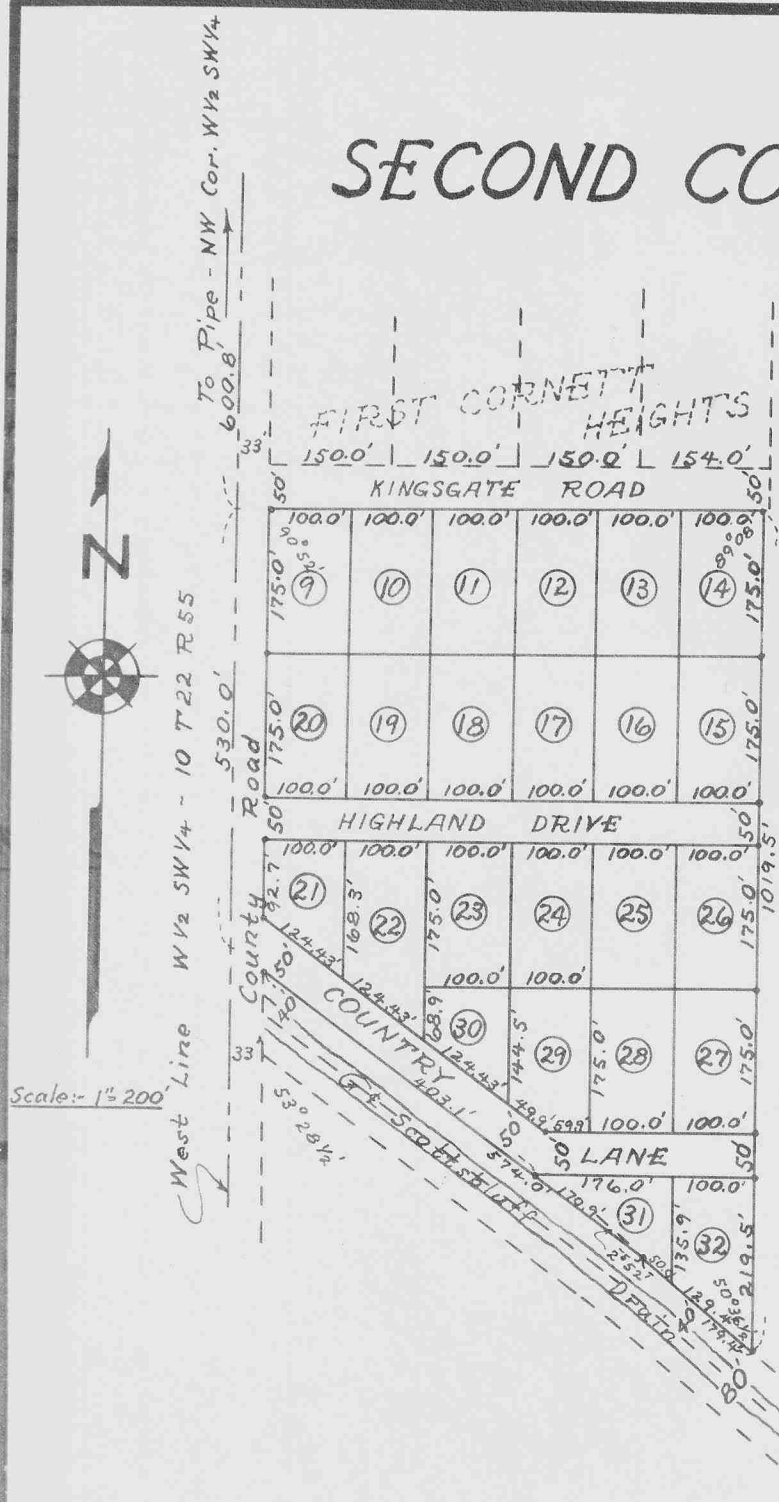


71371

# SECOND CORNETT HEIGHTS



THIS IS TO CERTIFY:- That on the 7th day of May, 1956, I surveyed SECOND CORNETT HEIGHTS, or part of the W 1/2 SW 1/4 Section 10, Township 22 North, Range 55 West of the 6th Principal Meridian, Scotts Bluff County, Nebraska, more particularly described as follows:-

Beginning at the southwest corner of First Cornett Heights, being a point on the west line of said W 1/2 SW 1/4, 600.8 feet south of the northwest corner thereof;

Thence South along said west line W 1/2 SW 1/4, for a distance of 530.0 feet, more or less, to the north right-of-way line of the Scottsbluff Drainage District Ditch;

Thence S. 53° 28 1/2' E., along said drainage ditch right-of-way, for a distance of 615.07 feet;

Thence S. 50° 36 1/2' E., along said drainage ditch right-of-way, for a distance of 179.4 feet;

Thence North, parallel with the said west line W 1/2 SW 1/4, for a distance of 1019.5 feet, more or less, to the south line of First Cornett Heights;

Thence S. 89° 08' W., for a distance of 633.0 feet, to the point of beginning.

That this plat is a correct delineation of said survey, drawn to the scale of 200 feet to the inch.

Tract corners are marked with 5/8" Iron Rods 36" and 48" long, the block corners and key points indicated having the 48" length, except that the northwest corner of Tract 9 has 3/4" x 36" Rod per plat of First Cornett Heights. Each tract bears its own number, and the dimensions are shown in feet and decimals.

WITNESS my hand this 18th day of May, 1956.

W. E. Keefover  
W.E. Keefover - Surveyor

## KNOW ALL MEN BY THESE PRESENTS:-

That the undersigned William E. Cornett and Gladys C. Cornett, husband and wife, are the owners of that part of the W 1/2 SW 1/4 of Section 10, Township 22 North, Range 55 West of the 6th P.M., Scotts Bluff County, Nebraska, upon which SECOND CORNETT HEIGHTS is located. That said owners have caused said land to be surveyed and platted as SECOND CORNETT HEIGHTS, as shown by the above plat and surveyor's certificate.

We hereby dedicate the roads, drives, lanes or streets as shown and designated on the plat, to the use and benefit of the public.

IN WITNESS WHEREOF, the said owners have executed these presents this 21st day of May, 1956.

William E. Cornett  
Gladys C. Cornett

STATE OF NEBRASKA }  
SCOTTS BLUFF COUNTY } S.S.

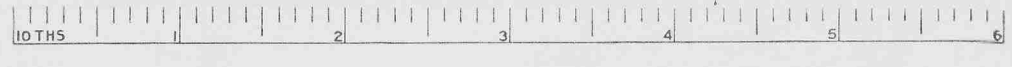
On this 21st day of May, 1956, before me, the undersigned, a Notary Public in and for said County, personally came William E. Cornett and Gladys C. Cornett, husband and wife, to me known to be the identical persons whose names are affixed to the foregoing plat and dedication, and acknowledged the same and the execution thereof to be their voluntary act and deed.

IN TESTIMONY WHEREOF, I have hereunto set my hand and affixed my seal the day and year last above written.

[Signature]  
NOTARY PUBLIC

STATE OF NEBRASKA }  
SCOTTS BLUFF COUNTY }  
Entered on Numerical Index and filed for record  
the 22 day of May, 1956 at 2:15  
o'clock P.M. and recorded in Book 25  
of Deeds on Page 505  
[Signature]  
REGISTER OF DEEDS

My Commission Expires 4/17/61



By \_\_\_\_\_ Deputy