

Note: See Aerial Plat Lots 1 & 2, Block 1, Book 195 Page 626

266

TAX REG.
PICTURE

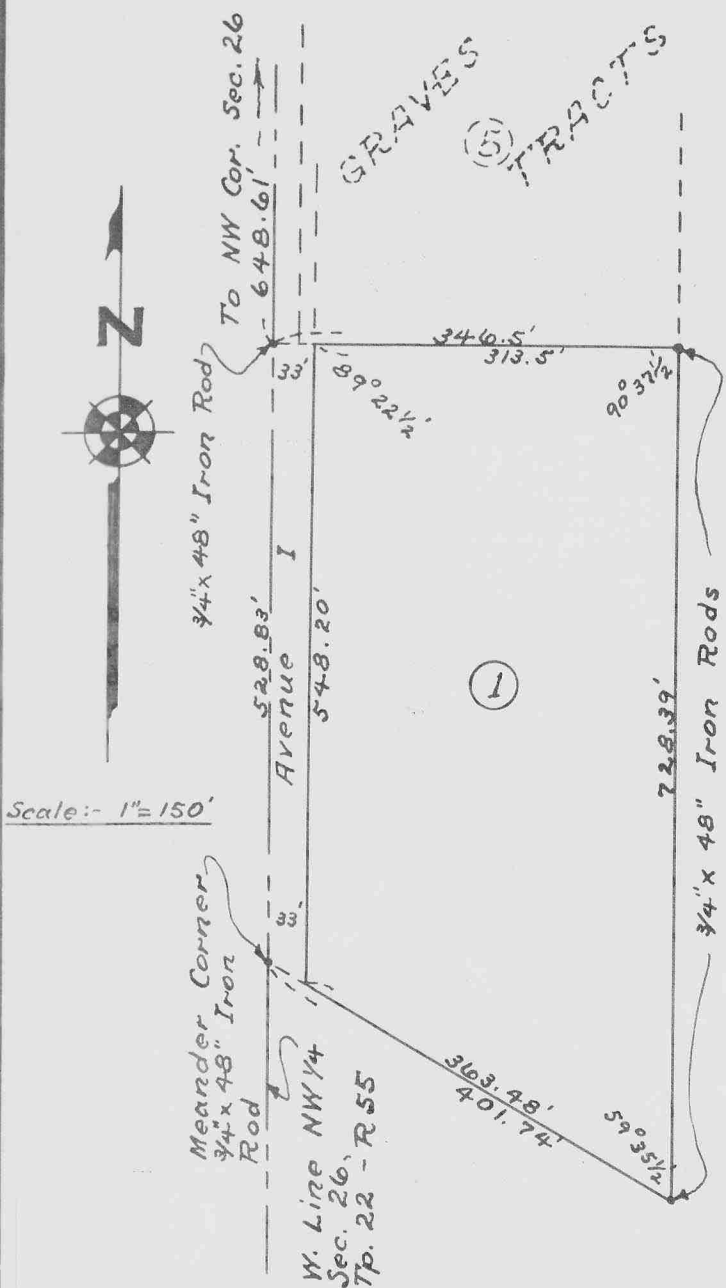
70920

STATE OF NEBRASKA } SS
SCOTTS BLUFF COUNTY }
Entered on Numerical Index and filed for record
the 12 day of April 1956 at 1:22
o'clock P.M. and recorded in Book 25 of
Plats on Page 266
By Thomas S. Truax
REGISTER OF DEEDS
By Thelma Stoll Deputy

70920

COUNTY ADDITION

TO THE CITY OF SCOTTSBLUFF NEBRASKA



THIS IS TO CERTIFY:- That on the 15th day of June, 1953, a survey was made under my direction, of part of Government Lot 1, Section 26, Township 22 North, Range 55 West of the 6th P.M., Scotts Bluff County, Nebraska, being the south 5 acres of Tax Lot 37, and more particularly described as follows:-

Beginning at a point on the west line of said Gov. Lot 1, which point is 648.61 feet south of the northwest corner of said Sec. 26; Thence east, on a line parallel with the north line of said Gov. Lot 1, for a distance of 346.5 feet;

Thence south, on a line parallel with the west line of said Gov. Lot 1, for a distance of 728.39 feet, to the old high bank of the North Platte River;

Thence northwesterly, on a straight line along the top of the old high bank of the North Platte River, for a distance of 401.74 feet, to the Meander Corner at the southwest corner of said Gov. Lot 1;

Thence north along the west line of said Gov. Lot 1, for a distance of 528.83 feet, to the point of beginning.

That this plat is a correct delineation of said survey, drawn to the scale of 150 feet to the inch.

Iron Rods as indicated on plat, are driven nearly flush with the ground. The tract is numbered 1, and the dimensions are in feet and decimals.

WITNESS my hand this 26th day of March, 1956.

O.M. Finley
O.M. Finley - County Surveyor

KNOW ALL MEN BY THESE PRESENTS:- That the County of Scotts Bluff, Nebraska, being the owner of that part of Government Lot 1, Section 26, Township 22 North, Range 55 West of the 6th P.M. Scotts Bluff County, Nebr. upon which COUNTY ADDITION to the City of Scottsbluff, Nebraska, is located, has caused said land to be surveyed and platted as COUNTY ADDITION to the City of Scottsbluff, Nebraska, as shown by the accompanying Plat and Surveyor's Certificate.

The Avenue as shown on plat is hereby dedicated to the use and benefit of the public.

IN TESTIMONY WHEREOF the said County of Scotts Bluff, Nebraska, has caused these presents to be executed by its President of the Board of Commissioners, and its Seal to be affixed hereto this 26th day of March, 1956.

ATTEST: [Signature]
County Clerk

[Signature]
President of the Board of
County Commissioners.

STATE OF NEBRASKA } SS.
SCOTTS BLUFF COUNTY }

On this 26th day of March, 1956, before me, the undersigned, a Notary Public in and for said County, personally came C. Davey, president of the Board of County Commissioners of Scotts Bluff County, Nebraska, to me personally known to be the president and the identical person whose name is affixed to the foregoing plat and dedication, and acknowledged the execution thereof to be his voluntary act and deed as such officer, and the voluntary act and deed of the said County of Scotts Bluff, Nebraska, and that the Seal of said County of Scotts Bluff, Nebraska, was thereto affixed by its authority.

WITNESS my Hand and notarial seal, the day and year last above written.

My Commission expires 8-19-58

M. Conn
Notary Public

This Plat approved and accepted by the Mayor and City Council of the City of Scottsbluff, Nebraska, as an Addition to said City this 3rd day of April 1956.

ATTEST: [Signature]
City Clerk

William E. Druffe
Acting Mayor

Approved by the Scottsbluff City Zoning Board this 3rd day of April 1956

[Signature]
Chairman

