

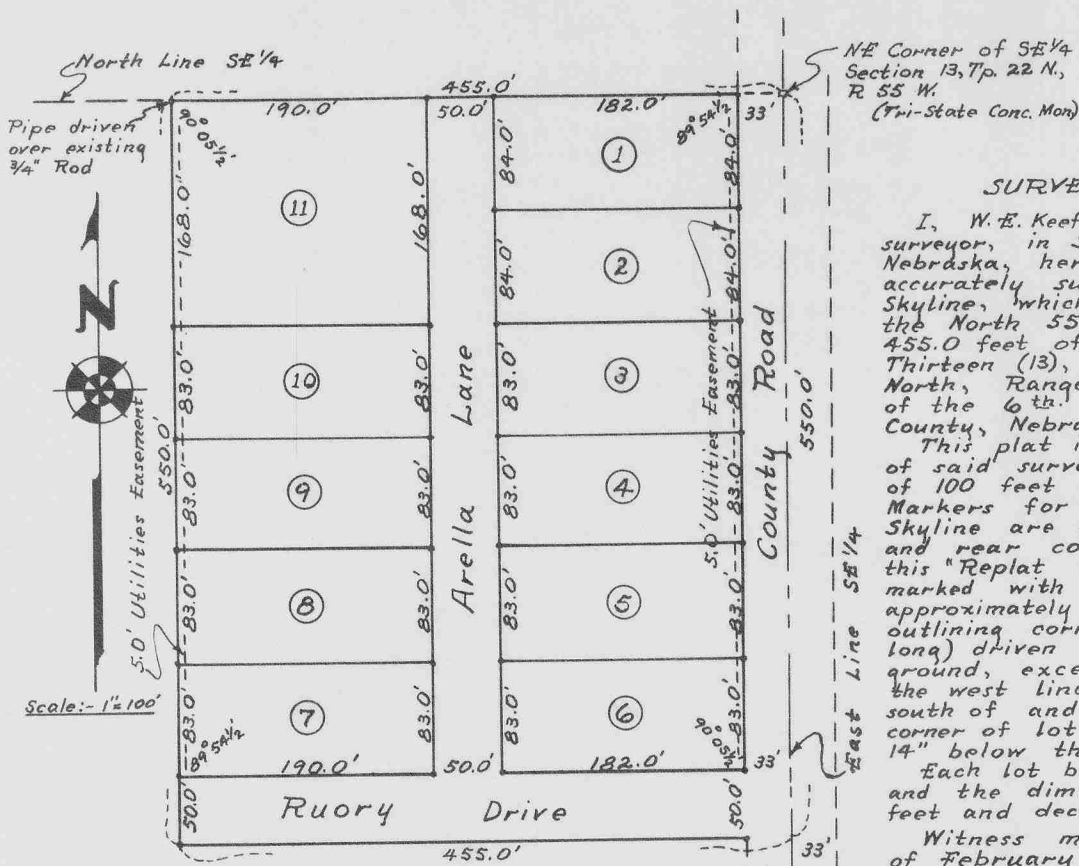
Note: See Vacation of Plat Book 88 - Pg 139
 Note: See Second Replat of Olson Skyline Book 88 - Pg 140

NUMERICAL INDEX
 GENERAL INDEX
 PICTURED

603

REPLAT OF OLSON SKYLINE

STATE OF NEBRASKA } SS
 SCOTTS BLUFF COUNTY }
 Entered on Numerical Index and filed for record
 the 21. day of April 1955 at 7.20
 o'clock A.M. and recorded in Book 81 of
 Deeds on Page 603
 By Alma L. Gray
 REGISTER OF DEEDS
 Deputy



NE Corner of SE 1/4
 Section 13, Tp. 22 N.,
 R. 55 W.
 (Tri-State Conc. Mon)

SURVEYOR'S CERTIFICATE

I, W. E. Keefover, a competent surveyor, in Scotts Bluff County, Nebraska, hereby certify that I have accurately surveyed Replat of Olson Skyline, which is a subdivision of the North 550.0 feet of the East 455.0 feet of the NE 1/4 SE 1/4, Section Thirteen (13), Township Twenty-two (22) North, Range Fifty-five (55) West of the 6th P.M. Scotts Bluff County, Nebraska.

This plat is a correct delineation of said survey, drawn to the scale of 100 feet to the inch. Corner Markers for the plat of Olson Skyline are removed, and the front and rear corners of each lot in this "Replat of Olson Skyline" are marked with 1" Galvanized Pipes approximately 36" long (pipes at outlining corners approximately 60" long) driven nearly flush with the ground, except that markers on the west line of platted area, south of and including the northwest corner of lot 9, are driven about 14" below the ground surface.

Each lot bears its own number, and the dimensions are shown in feet and decimals.

Witness my hand this 16th day of February, 1955.

W. E. Keefover
 Surveyor

DEDICATION

We, Arthur Olson and Stella Olson, husband and wife, being the owners of that part of the NE 1/4 of the SE 1/4, Section Thirteen (13), Township Twenty-two (22) North, Range Fifty-five (55), West of the 6th P.M. Scotts Bluff County, Nebraska, upon which Replat of Olson Skyline is located, have, by our free consent, caused said land to be surveyed and platted as Replat of Olson Skyline, as shown by the above plat and Surveyor's Certificate. We hereby dedicate the Roads, Streets, Drives and Lanes shown and designated on said plat, to the use and benefit of the public.

An easement for Public Utility installation and maintenance is reserved on the east 5.0 feet of lots 1 through 6 inclusive, and on the west 5.0 feet of lots 7 through 11 inclusive.
 Dated this 14th day of April 1955.

Arthur Olson
Stella Olson

STATE OF NEBRASKA } SS.
 SCOTTS BLUFF COUNTY }

On this 14th day of April 1955, before me, the undersigned, a Notary Public, in and for said County, personally came Arthur Olson and Stella Olson, husband and wife, to me known to be the identical persons whose names are affixed to the foregoing Plat and Dedication, and they acknowledged the same to be their voluntary act and deed.

Witness my hand and notarial seal the day and year last above written.

SEAL
 COMMISSION EXPIRES 4-17-55

Paul J. McGowan
 NOTARY PUBLIC

