

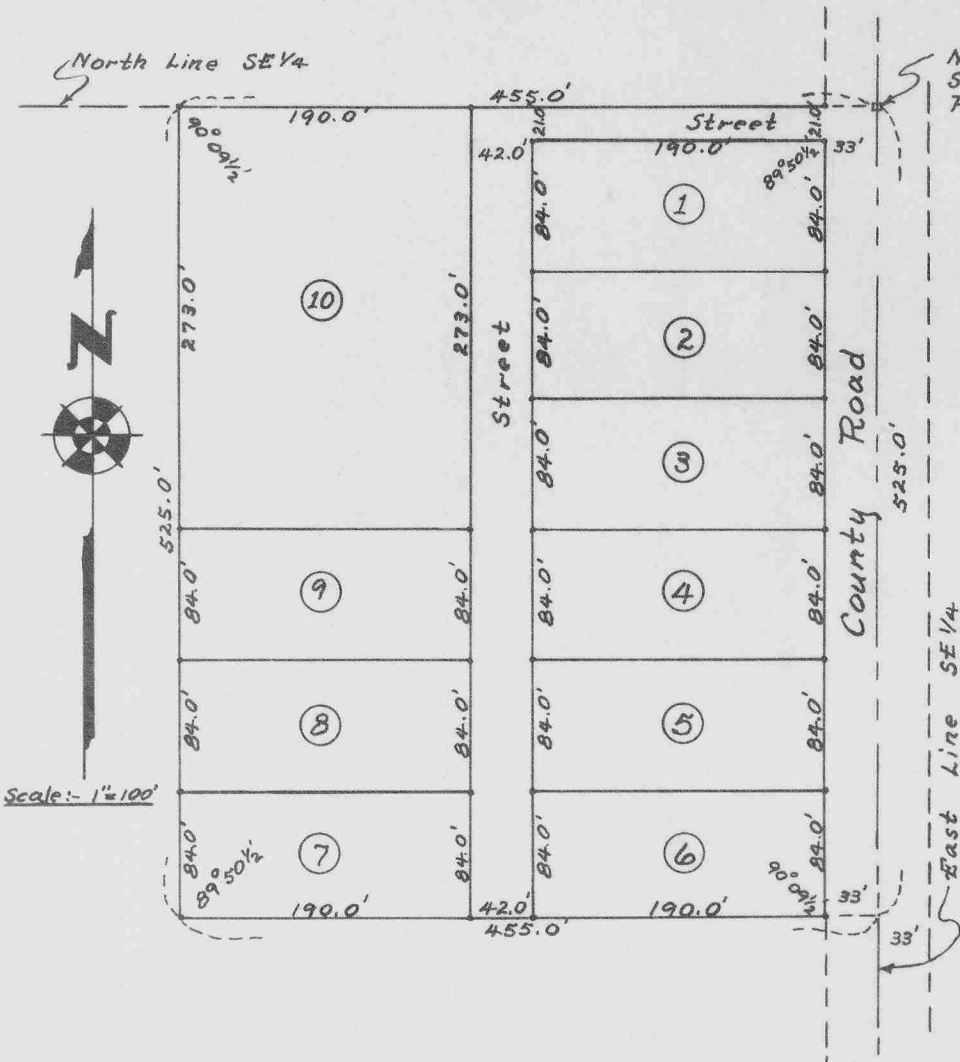
Note: See Vacation of Plat Book 81- Pg 572  
 Note: See Replat of Olson Skyline Book 81, Pg 603

# OLSON SKYLINE

65441

NUMERICAL  
GENERAL  
TAX RES.  
PICTURED

STATE OF NEBRASKA } SS  
 SCOTTS BLUFF COUNTY }  
 Entered on Numerical Index and filed for record  
 the 11 day of JANUARY 1955 at 8:52  
 o'clock P.M. and recorded in Book 81 of  
 Deeds on Page 39  
*Alma L. Suman*  
 REGISTER OF DEEDS



NE Corner of SE 1/4  
 Section 13, Tp. 22 N.,  
 R. 55 W.  
 (Tri-State Conc. Mon)

### SURVEYOR'S CERTIFICATE

I, W.E. Keefover, a competent surveyor, in Scotts Bluff County, Nebraska, hereby certify that I have accurately surveyed Olson Skyline, which is a subdivision of part of the NE 1/4 SE 1/4, Section Thirteen (13), Township Twenty-two (22) North, Range Fifty-five (55), West of the 6th P.M., Scotts Bluff County, Nebraska, as shown by the accompanying Plat. Said Plat is a correct delineation of said survey, drawn to the scale of 100 feet to the inch.  
 The front and rear corners of each Lot are marked with 1" Galvanized Pipe approximately 36" long. (Pipes at outlining corners approximately 60" long) driven nearly flush with the ground.  
 Each Lot bears its own number, and the dimensions are shown in feet and decimals.  
 The west corners of lots 7, and 8, are driven below plow depth.  
 Witness my hand this 7th day of January, 1955.

*W. E. Keefover*  
 Surveyor

### DEDICATION

We, Arthur Olson and Stella Olson, husband and wife, being the owners of that part of the NE 1/4 of the SE 1/4, Section Thirteen (13), Township Twenty-two North, Range Fifty-five (55), West of the 6th P.M., Scotts Bluff County, Nebraska; upon which Olson Skyline is located, have caused said land to be surveyed and platted as Olson Skyline, as shown by the above Plat and Surveyor's Certificate. We hereby dedicate the streets, designated upon and referred to in said Plat, to the use and benefit of the public.

Dated this 8th day of January, 1955.

*Arthur Olson*  
 ARTHUR OLSON  
*Stella Olson*  
 STELLA OLSON

STATE OF NEBRASKA } SS.  
 SCOTTS BLUFF COUNTY }

On this 8th day of January, 1955, before me, the undersigned, a Notary Public, in and for said County, personally came Arthur Olson and Stella Olson, husband and wife, to me known to be the identical persons whose names are affixed to the foregoing Plat and Dedication, and they acknowledged the same to be their voluntary act and deed.  
 Witness my hand and notarial seal the day and year last above written.



*W. E. Keefover*  
 NOTARY PUBLIC

