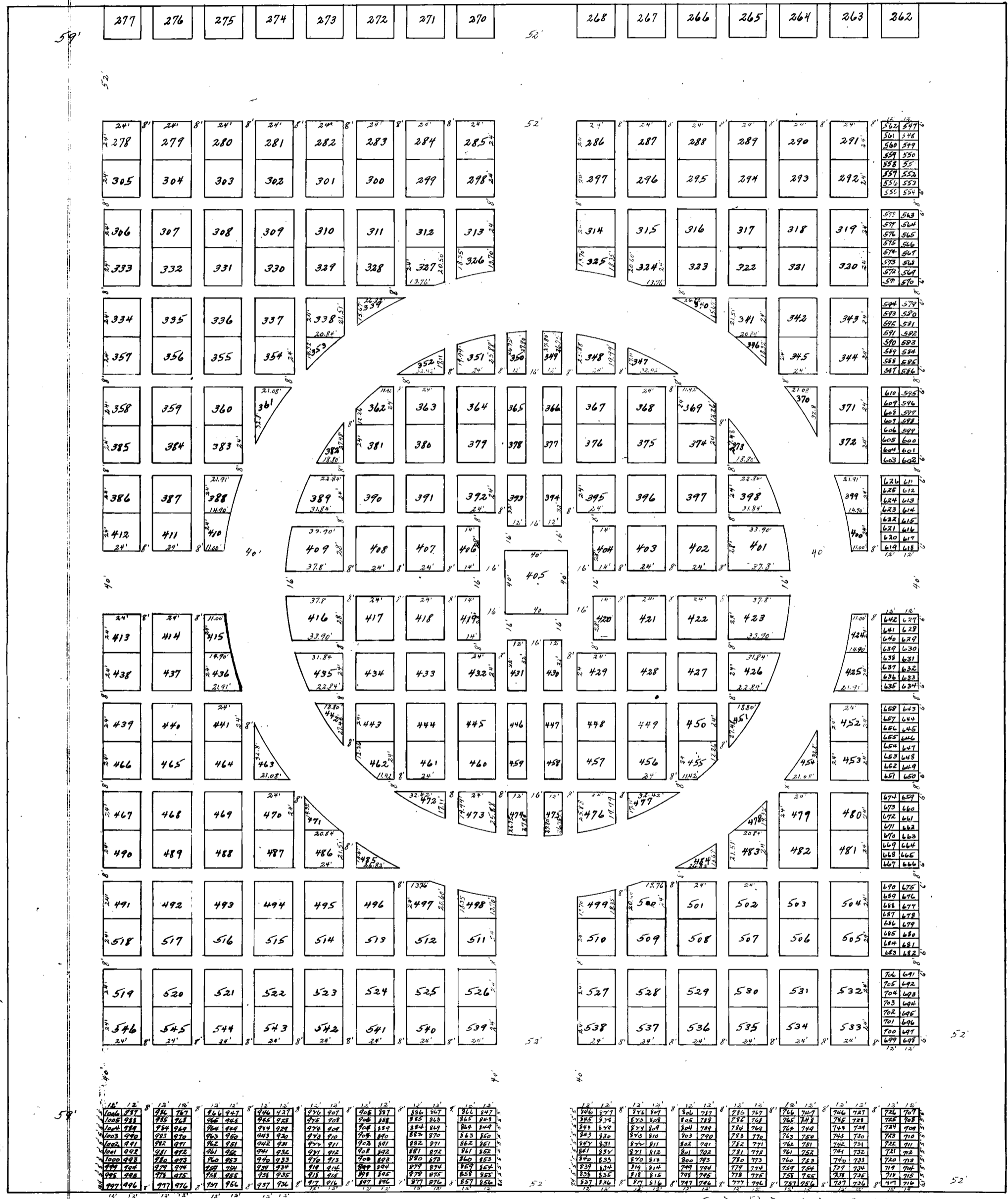


DEED RECORD No. 8

163375-MFG. BY OMAHA PRINTING CO., OMAHA

FAIRVIEW CEMETERY
FIRST ADDITION
Scottsbluff, Nebr.

STATE OF NEBRASKA, Scotts Bluff County, ss.
Entered on Numerical Index and filed for record
the 21 day of March, 1921, at 4 o'clock P.M. and
recorded in Book 8 of Deeds on Page 671.
R. G. Neeley, Register of Deeds.



NOTE: Every tract in First Addition FAIRVIEW CEMETERY is a lot, regardless of size; every lot has a number. The first lot is numbered 278, the last 1006.

FIRST ADDITION
Scottsbluff, Nebraska.
Scale 1" = 30'

Scale Reduced to 1" = 60'.
R. G. Neeley,
Register of Deeds.

I hereby certify that the above plat is a correct delineation of Fairview Cemetery, First Addition, which is located on a tract of land in the N W Quarter of the NW Quarter of section 13, Twp 22 N., R 55 W of the 6th P M., more particularly described as follows: Beginning at a point on the West line of said section 13, which point is 656.5 ft south of the N W corner of said section, thence East a distance of 660 feet, thence South a distance of 671.8 ft. thence west on the South line of the NW 1/4 of the NW 1/4 of said sec 13 a distance of 660 ft, thence North on the West line of sec 13 a distance of 680.35 ft to the point of beginning. The dimensions of the lots and the width of the roads and alleys are indicated on the plat in feet and inches. Each lot bears its own number. Witness my hand this 28th day of January, A D 1921.

574 Cor. Map 11/11/11
13-22-55