

56

62856

NUMERICAL
GEN. TAX REG.
PICTURED

HAVE THIS DEED RECORDED

File No.

WARRANTY DEED
VESTING ENTIRE TITLE IN SURVIVOR

From

To

STATE OF NEBRASKA }
SCOTTS BLUFF County, } ss.

Entered on Numerical Index and filed for
Record in the Register of Deeds' office of said
County, the 6 day of May
1954, at 4:15 o'clock P.M., and
recorded in Book 79 of Deeds, Page
55

Alma L. Luax
Register of Deeds.

Mail

Num'l. Gen'l.

Compared by

Paged Numerical. Paged General.

Time Rec'd. Fee.

The Huffman General Supply House, Lincoln, Nebr.

OU

62862

NUMERICAL
GEN. TAX REG.
PICTURED

STATE OF NEBRASKA, } SS
SCOTTS BLUFF COUNTY }

Entered on Numerical Index and filed for record
the 7 day of May 1954 at 10:00
o'clock A.M. and recorded in Book 79 of
Deeds on Page 56

Alma L. Luax
REGISTER OF DEEDS

By Deputy

BLOCK ONE NORTHEAST ADDITION

Scale: 1" = 100'

M. L. Garber

SURVEYOR'S CERTIFICATE

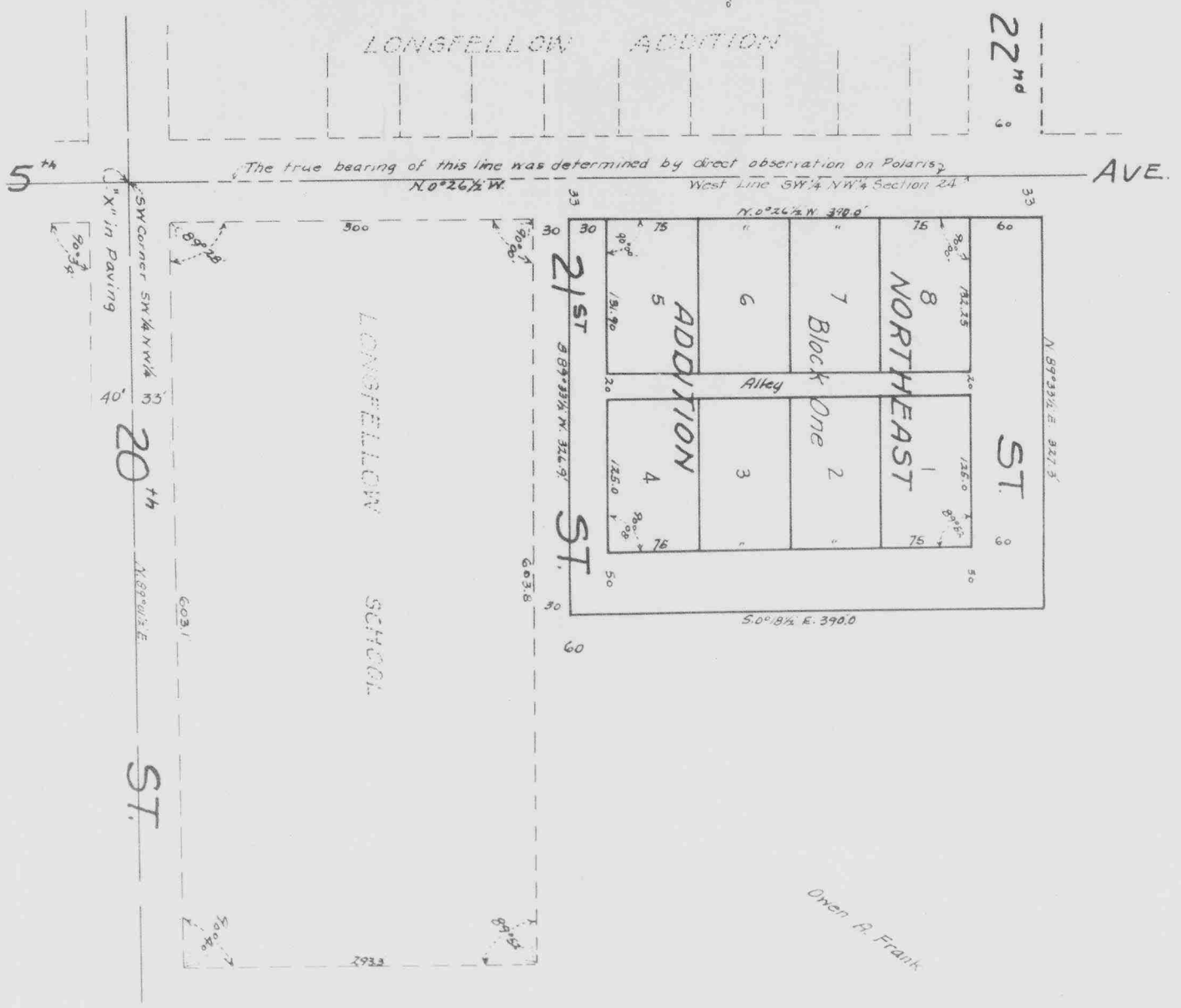
I, *Maurice L. Garber*, a competent surveyor of Scotts Bluff County, Nebraska, hereby certify that on the 3rd day of August, 1953, I surveyed BLOCK ONE, NORTHEAST ADDITION to the City of Scottsbluff, Nebraska, a part of the SW 1/4 NW 1/4 Section 24, Township 22 North Range 55 West of the 6th Principal Meridian, Scotts Bluff County, Nebraska, and more particularly described as follows: Beginning at a point which is N 0° 26 1/2' W. 363.0 feet and N 89° 33 1/2' E. 330.0 feet from the SW corner SW 1/4 NW 1/4 said section 24, which corner is marked by an "X" chiseled in the concrete paving; Thence N 0° 26 1/2' W. on a line parallel with and 33.0 feet east of the west line said SW 1/4 NW 1/4 for a distance of 390.0 feet; Thence N 89° 33 1/2' E. for a distance of 321.3 feet; Thence S 0° 18 1/2' E. for a distance of 390.0 feet; Thence S 89° 33 1/2' W. for a distance of 326.9 feet to the point of beginning; That the accompanying plat is a correct delineation of said survey drawn to a scale of one inch equals one hundred feet, iron pins are driven firmly into the ground at each lot corner. Each lot bears its identifying number.

Maurice L. Garber
Surveyor

Owen R. Frank



All bearings shown on this plat are referred to the true meridian.
Scale: 1" = 100'



62862

DEDICATION

We, the undersigned, being the owners of a part of the Southwest Quarter of the Northwest Quarter (SW $\frac{1}{4}$ NW $\frac{1}{4}$) of Section Twenty-four (24) Township Twenty-two (22) North, Range Fifty-five (55) West of the 6th P.M., Scotts Bluff County, Nebraska, on which Block One (1) of the Northeast Addition to Scotts Bluff County, Nebraska, is located, have caused said land to be surveyed and platted as Block One (1) Northeast Addition in the County of Scotts Bluff, Nebraska, as shown by the accompanying plat and surveyor's certificate.

We hereby dedicate the streets, avenues and alleys designated on and referred to in the ^{attached} plat to the use and benefit of the public, reserving, however, unto ourselves, our heirs and assigns, or the owners of any property located within said area, the right to use the lands designated in said plat as streets and alleys, for the purposes of installation of sewer, water, gas or electric lines or conduits, and reserve unto ourselves, our assigns or any owners of any land in said area, the right to make any improvements in said areas designated streets or alleys, not inconsistent with their use as streets and alleys, particularly being sidewalks, curbs and vegetation located in the land designated as such streets but between a line which would be the curb lines of Twenty-second Street of the City of Scottsbluff, extended, and the lot lines as designated on said plat.

Dated this 4th day of May, 1954.

Patricia Abbott
 Patricia Abbott, Formerly Patricia Frank

Arthur J. Abbott
 Arthur Abbott, Husband of Patricia Abbott

William R. Frank
 William R. Frank

Gladeth A. Frank
 Gladeth Frank, Wife of William R. Frank