

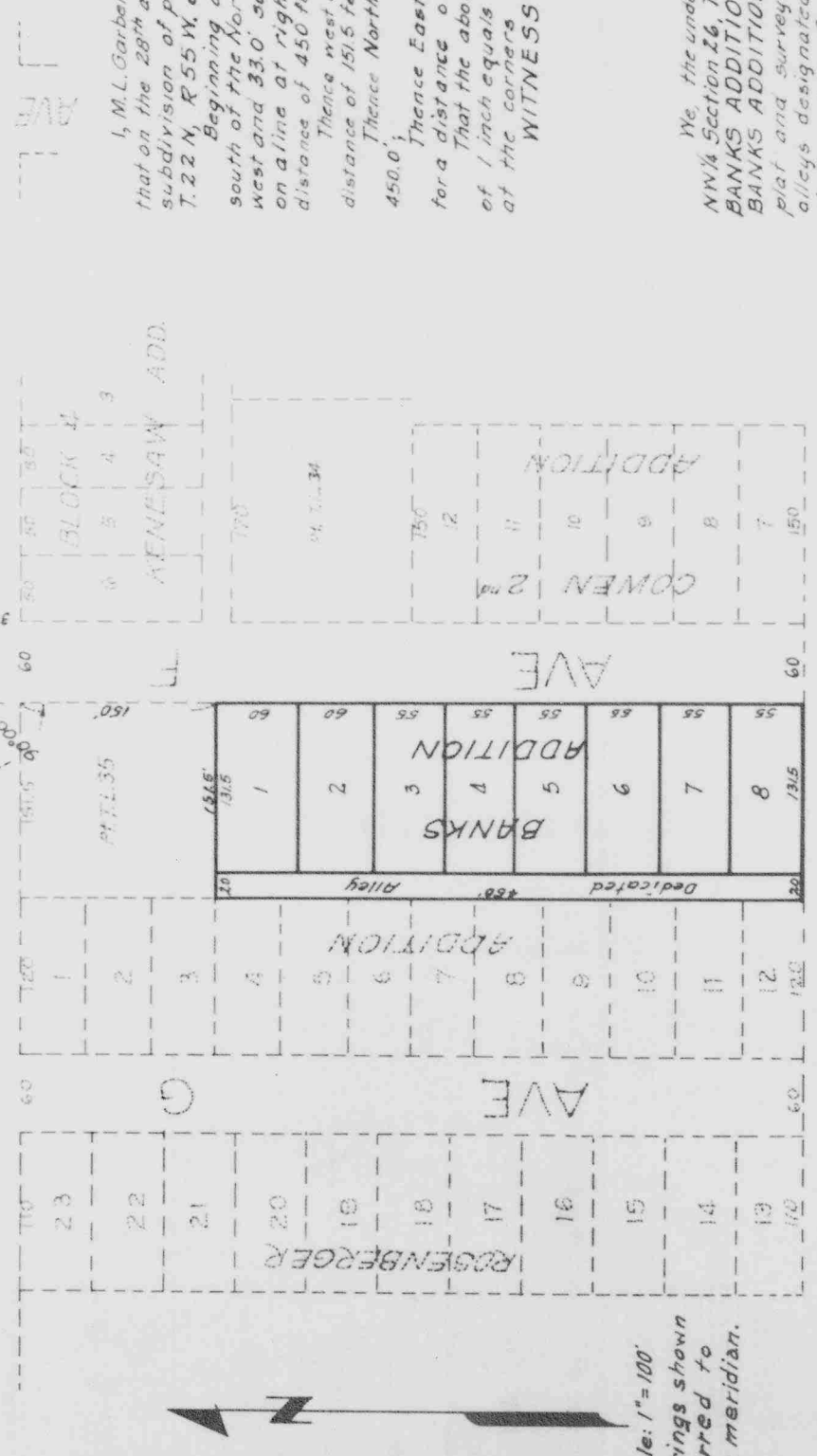
PLAT OF BANKS ADDITION

SCALE: 1"=100'
M.L. Garber

1/8" in Paving

14640' to NW Cor. NW 1/4 Section 26 T. 2 S. R. 5 W.

WEST OVERLAND DR



Scale: 1"=100'
Bearings shown referred to true meridian.

SURVEYOR'S CERTIFICATE

I, M.L. Garber, a competent surveyor of Scotts Bluff County, Nebraska, hereby certify that on the 28th day of March, 1953, I completed a survey of BANKS ADDITION, a subdivision of part of Tax Lot 35, situated on part of the NW 1/4 NW 1/4 section 26, T. 22 N., R. 55 W. of the 6th P.M. and more particularly described as follows:

Beginning at a point on the west line of Avenue F 60 feet west and 150 feet south of the North west corner of Block 4, Kensan Addition, which corner is 14640 feet and 33.0' south of the Northeast corner NW 1/4 said section 26; thence South on a line at right angles to the north line of said NW 1/4 NW 1/4 Section 26 for a distance of 450 feet;

Thence west on a line parallel to the north line said NW 1/4 NW 1/4 Section 26 for a distance of 151.5 feet;

Thence North on a line parallel to the west line of Avenue F for a distance of 450.0';

Thence East on a line parallel to the North line said NW 1/4 NW 1/4 Section 26 for a distance of 151.5 feet to the point of beginning.

That the above plat is a correct delineation of said survey drawn to a scale of 1 inch equals one hundred feet. Iron pins are driven firmly into the ground at the corners of each lot. Each lot bears its identifying number.

WITNESS MY HAND this 6th day of April, 1953.

M. L. Garber
M.L. Garber, Deputy State Surveyor

DEDICATION

We, the undersigned, being the owners of a part of Tax Lot 35 Located in the NW 1/4 Section 26, T. 22 N., R. 55 W. of the 6th P.M. Scotts Bluff County, Nebraska on which BANKS ADDITION is located have caused said land to be surveyed and platted as BANKS ADDITION to the City of Scottsbluff, Nebraska as shown by the above plat and surveyors certificate. We hereby dedicate the streets, avenues, and alleys designated upon and referred to in the said plat to the use and benefit of the public.

Ruby J. Banks
Ruby J. Banks

John K. Banks
John K. Banks

Examined and approved for R-2 Residential District, this 7 day of APR. 1953.
Board of Adjustments
W.S. Boston
Chairman of the Board

ZONING

ACCEPTANCE by CITY of SCOTTSBLUFF

The above Plat and Dedication approved and accepted by the Mayor and City Council of the City of Scottsbluff, Nebraska, by resolution duly passed this 7 day of APRIL 1953.

Albert P. Feinde
Mayor

ACKNOWLEDGEMENT

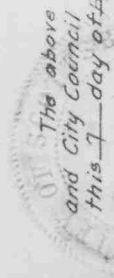
STATE of NEBRASKA }
SCOTTS BLUFF COUNTY } ss

On this 7 day of April 1953, before me, a notary public, commissioned and qualified for and residing in said county, personally came Ruby J. Banks and John K. Banks, wife and husband, to me known to be the identical persons whose names are affixed to the above dedication and acknowledge the execution thereof to be their voluntary act and deed.

IN TESTIMONY WHEREOF, I have hereunto set my hand and Notarial Seal the day and year last above written.

John K. Banks
Notary Public

My commission expires 12 day of Sept, 1956.



ATTEST:

James S. Starnes
City Clerk

STATE OF NEBRASKA }
SCOTTSBLUFF COUNTY } ss

Entered on November 1 and 2, 1953. Book 75 of Deeds 1-74