

DEED RECORD No. 64

SCOTTS BLUFF COUNTY, NEBRASKA

COURIER PRESS, GERING, NEBR.

Melissa L. Colter, et al

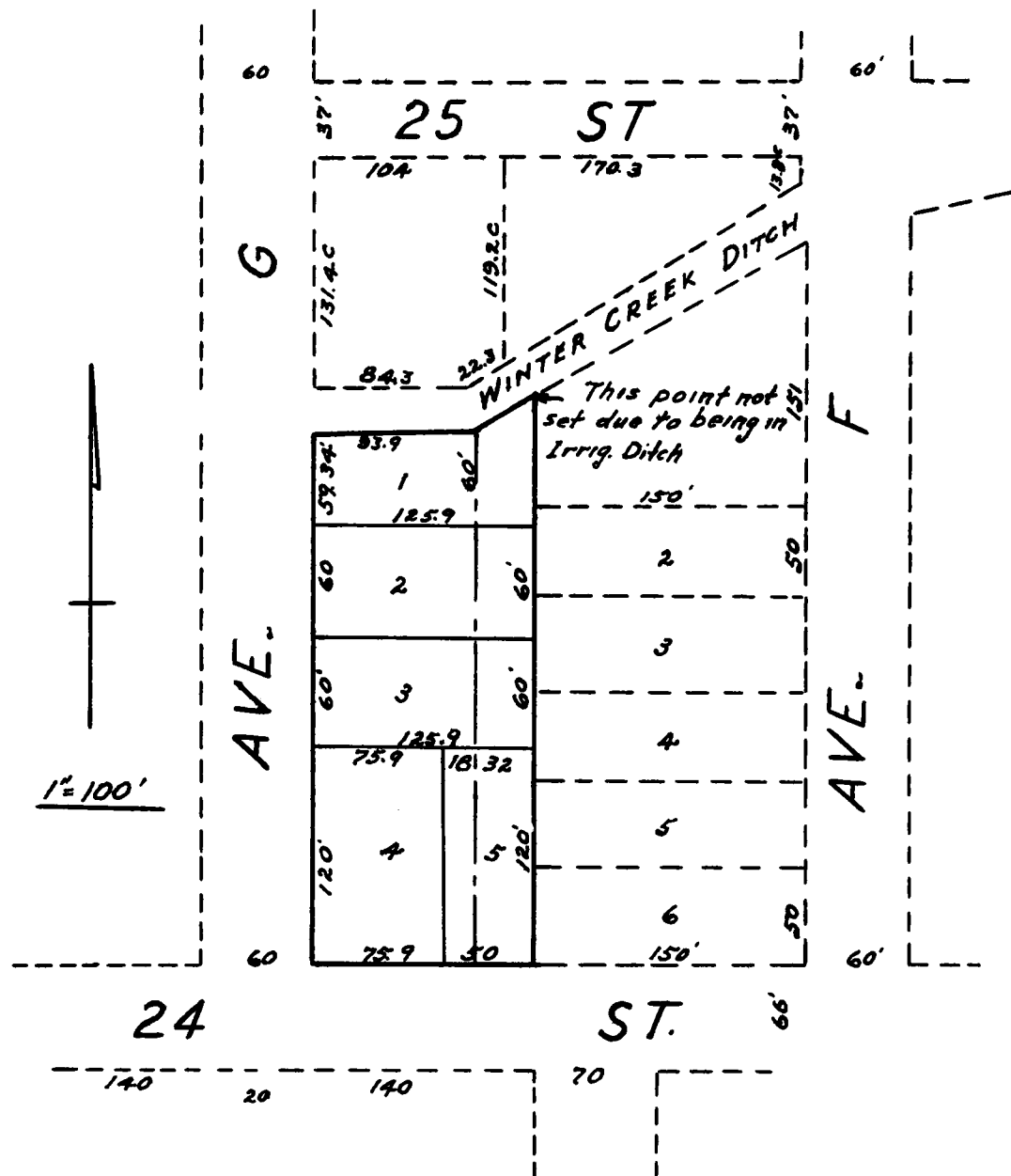
to

The Public

State of Nebraska, Scotts Bluff County, ss.
Entered on Numerical Index and filed
for record the 15 day of June 1950 at 11:00
o'clock A.M. and recorded in Book 64 of Deeds
on Page 355
Alma L. Truax, Register of Deeds

.....

COLTER ADDITION TO THE CITY OF SCOTTSBLUFF



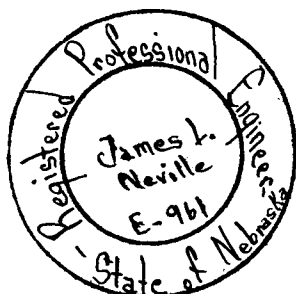
AEA974

ENGINEER'S CERTIFICATE

STATE OF NEBRASKA)
) ss:
SCOTTS BLUFF COUNTY)

I, James L. Neville, a competent surveyor of Scotts Bluff County, Nebraska, hereby certify that I have accurately surveyed Colter Addition to the City of Scottsbluff situated in the E.93.9' of Tract 2 & the W.32' of tract 1 as originally surveyed and platted in Tracts 1 and 2, Enterprise Tracts, Scotts Bluff County, Nebraska, that the above plat is a correct delineation of said survey, drawn to a scale of 100' to an inch. Iron pins are driven into the ground at the front and rear corners of each Lot. Each Lot bears its own number.

WITNESS MY HAND this 15 day of May, 1950.



James L. Neville
Civil Engineer

Reg. No. E-961

DEDICATION

We, the undersigned being owners of parts of Tracts 1 and 2, Enterprise Tracts, Scotts Bluff County, Nebraska, as described above have caused said land to be surveyed and platted as Colter Addition to the City of Scottsbluff as shown by the above plat and