

DEED RECORD NO. 60
SCOTTS BLUFF COUNTY, NEBRASKA

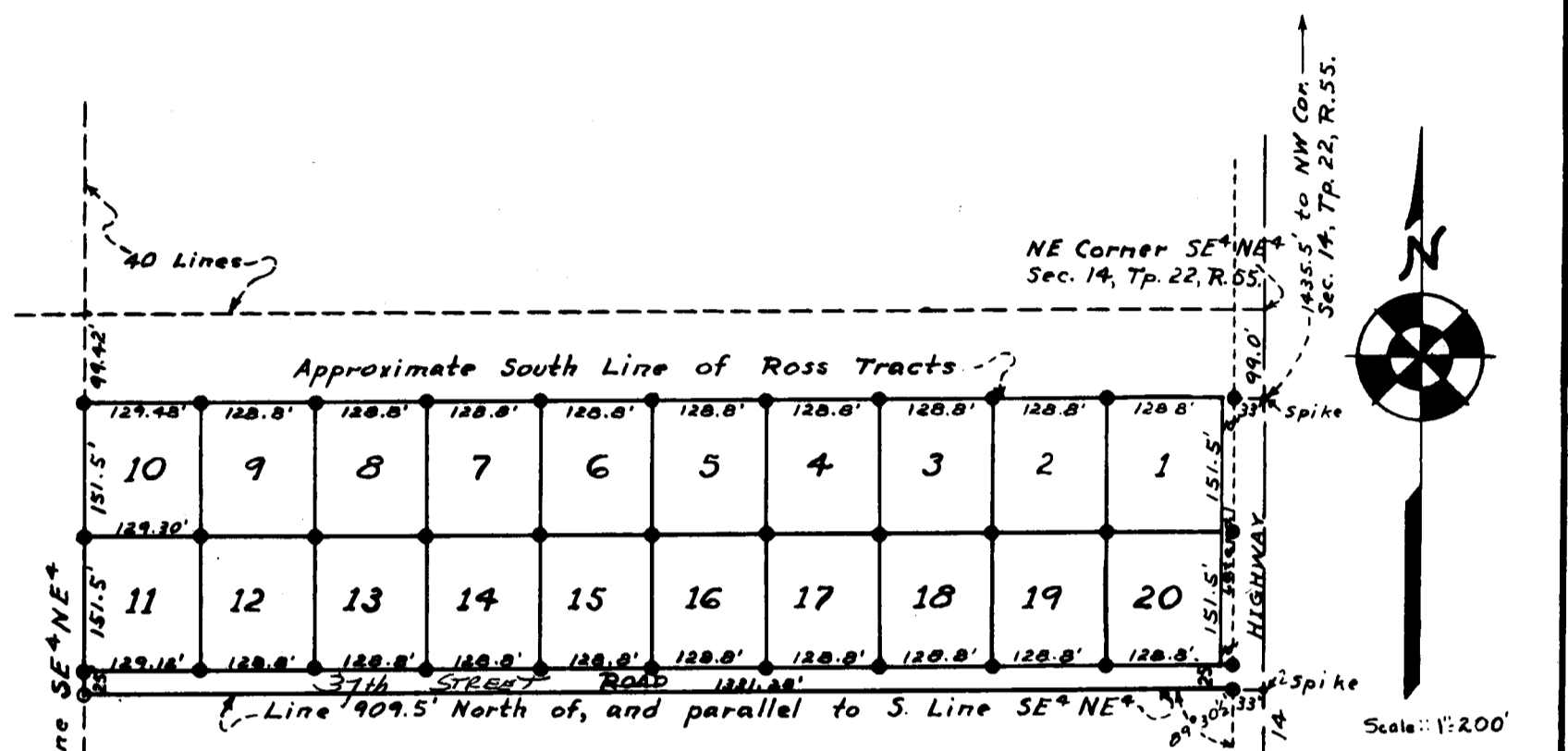
E. J. Waite and
Leona M. Waite
to
The Public

State of Nebraska, Scotts Bluff County, ss.
Entered on Numerical Index and filed for
record the 27 day of June 1949 at 1:15
o'clock P.M. and recorded in Book 60 of
Deeds on Page 647.
Alma L. Truax, Register of Deeds.

Note: See Amended Zoning Plat Lot 17, Bluffs Tracts - Book 194 Page 530

Note: See Vacation of N 27' of Lots 1-10 Bluffs Tract Misc 74 - Pg 4109 + Re-recorded Misc 74, Pg 420
Note: See Replat N 27' of Lots 1-10, Book 128, Page 202

STREET NAME CHANGED ORD. # 1998 - MISC - 86-57



This is to certify that, on the 26th day of April, 1949, I completed a survey of the BLUFFS TRACTS, situated on a part of the S.E. 1/4 N.E. 1/4 of Section 14, Tp. 22 N., R. 55 W. of 6th P.M., in Scotts Bluff County, Nebraska, and more particularly described as follows: Beginning at a point on the east line of the said S.E. 1/4 N.E. 1/4, which point is 99 feet south of the northeast corner of the said S.E. 1/4 N.E. 1/4;

Thence south, along the east line of the said S.E. 1/4 N.E. 1/4, for a distance of 328 feet;

Thence west, on a line parallel with the south line of the said S.E. 1/4 N.E. 1/4, for a distance of 1331.28 feet, to the west line of the said S.E. 1/4 N.E. 1/4;

Thence north, on the west line of the said S.E. 1/4 N.E. 1/4, for a distance of 328 feet;

Thence east, on a line parallel with the south line of the said S.E. 1/4 N.E. 1/4, for a distance of 1331.64 feet, to the point of beginning;

And that the above plat is a correct delineation of said survey, drawn to a scale of 200 feet to the inch.

The Tracts are numbered from 1 to 20, inclusive, and each Tract bears it's own number.

At each point, marked by a solid circle on the plat, there is a 3/4-inch steel reinforcing rod, 3 feet long, driven nearly flush with the ground.

At the southwest corner of the road, there is a 3/4-inch iron pipe, 3 feet long, driven nearly flush with the ground.

At the southeast corner of the road, there is a 3/4-inch steel reinforcing rod, 3 feet long, driven into the ground 1 1/2 feet.

The east corners of the area, in the center of the County road, are marked by 8-inch steel spikes, driven flush with the pavement.

IN WITNESS WHEREOF, I have hereunto set my hand this 27th day of April, 1949.

O. M. Finley
Surveyor.

THIS CERTIFIES that E. J. Waite, and Leona M. Waite, his wife, are the owners of that part of the S.E. 1/4 N.E. 1/4 of Section 14, Tp. 22 N., R. 55 W. of the 6th P.M., on which the Bluffs Tracts are located;

That the said owners have caused the said land to be surveyed and plotted as shown on the above plat.

That the road shown on the south portion of the plat is hereby dedicated to the Public Use.

IN TESTIMONY WHEREOF, the said owners have executed these presents this 21st day of JUNE., 1949.

E. J. Waite Leona M. Waite

STATE OF NEBRASKA } s.s.
SCOTTSBLUFF COUNTY }
On this 21st day of JUNE., 1949, before me, a Notary Public in and for said County, personally appeared E. J. Waite, and Leona M. Waite, each personally known by me to be the identical person whose name is subscribed to the foregoing instrument, and then and there each did acknowledge the said instrument, and the execution thereof, to be his and her voluntary act and deed.

WITNESS my hand and Notarial Seal the day and year last above written.

My commission expires May 26 - 50

E. H. Kelly
Notary Public

