

DEED RECORD, No. 6

George L. Carpenter & wife

STATE OF NEBRASKA, Scotts Bluff County, ss.

to

Entered on Numerical Index and filed for record the 12 day of August 1919, at 9:45 o'clock A.M. and recorded in Book 6 of Deeds on Page 234.

The Public

R. G. Neeley, Register of Deeds.

Sec. 11-22-55
Sec. 11-22-55
Sec. 11-22-55

Sec. 11-22-55
Sec. 11-22-55
Sec. 11-22-55

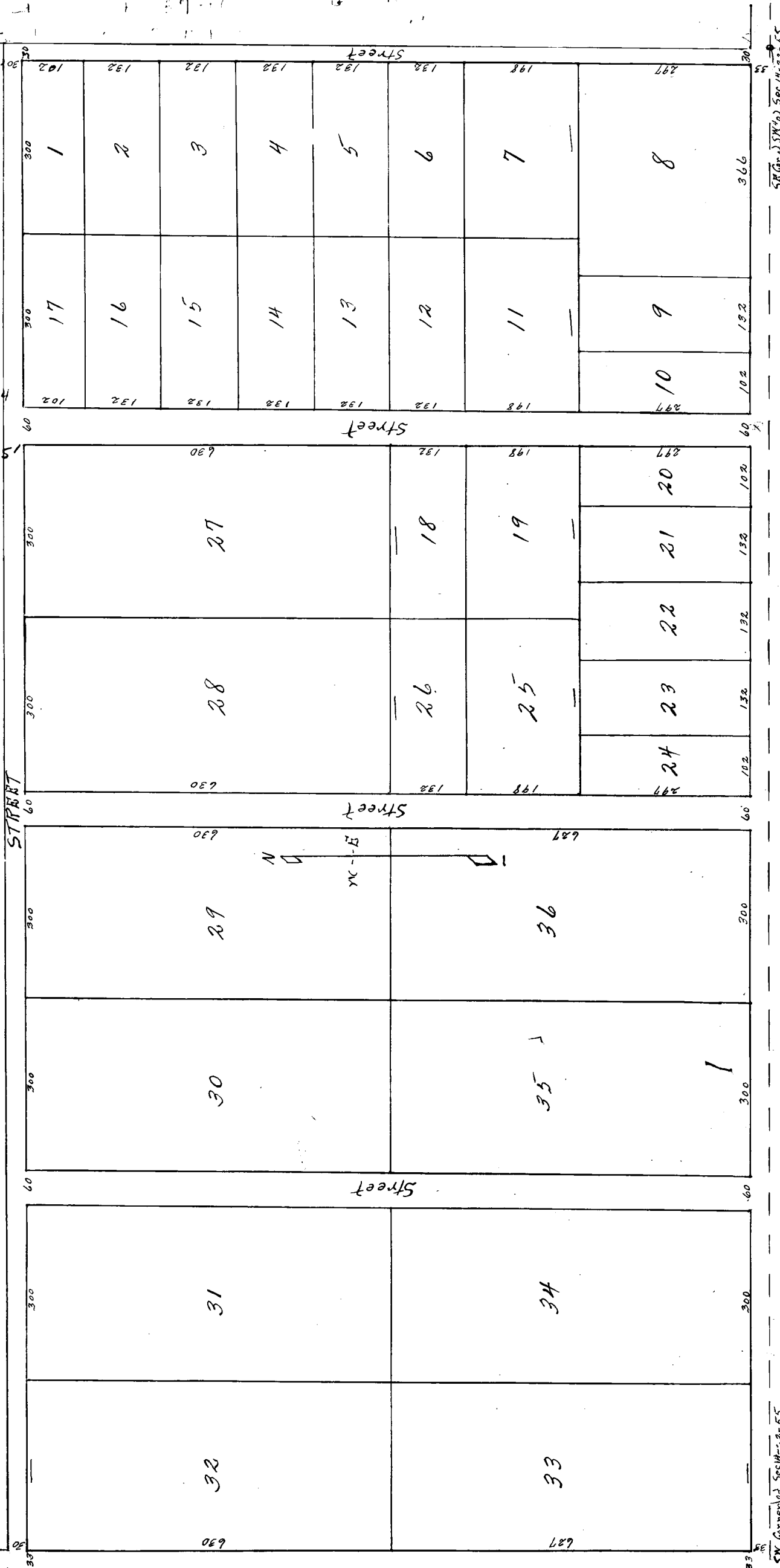
Sec. 11-22-55
Sec. 11-22-55
Sec. 11-22-55

Sec. 11-22-55
See vacation tract 22
Mees. 144-220 + other
land to allow replat as
McDonald's Subd.

PLAT OF GOOS TRACTS TO SCOTTS BLUFF COUNTY NEB.

Scale 1 inch = 200 feet

Note: See replat 7134' of
W 125' of Tr 33 + Lot 1
Rights Add - 2001-4145
Note: See replat 270'
of S 300' Tract 34 Goss
Tracts now L 1 + 2 Kelly
Subd. T 2001-7728



SR Gr. 11-22-55
SR Gr. 11-22-55
SR Gr. 11-22-55
SR Gr. 11-22-55