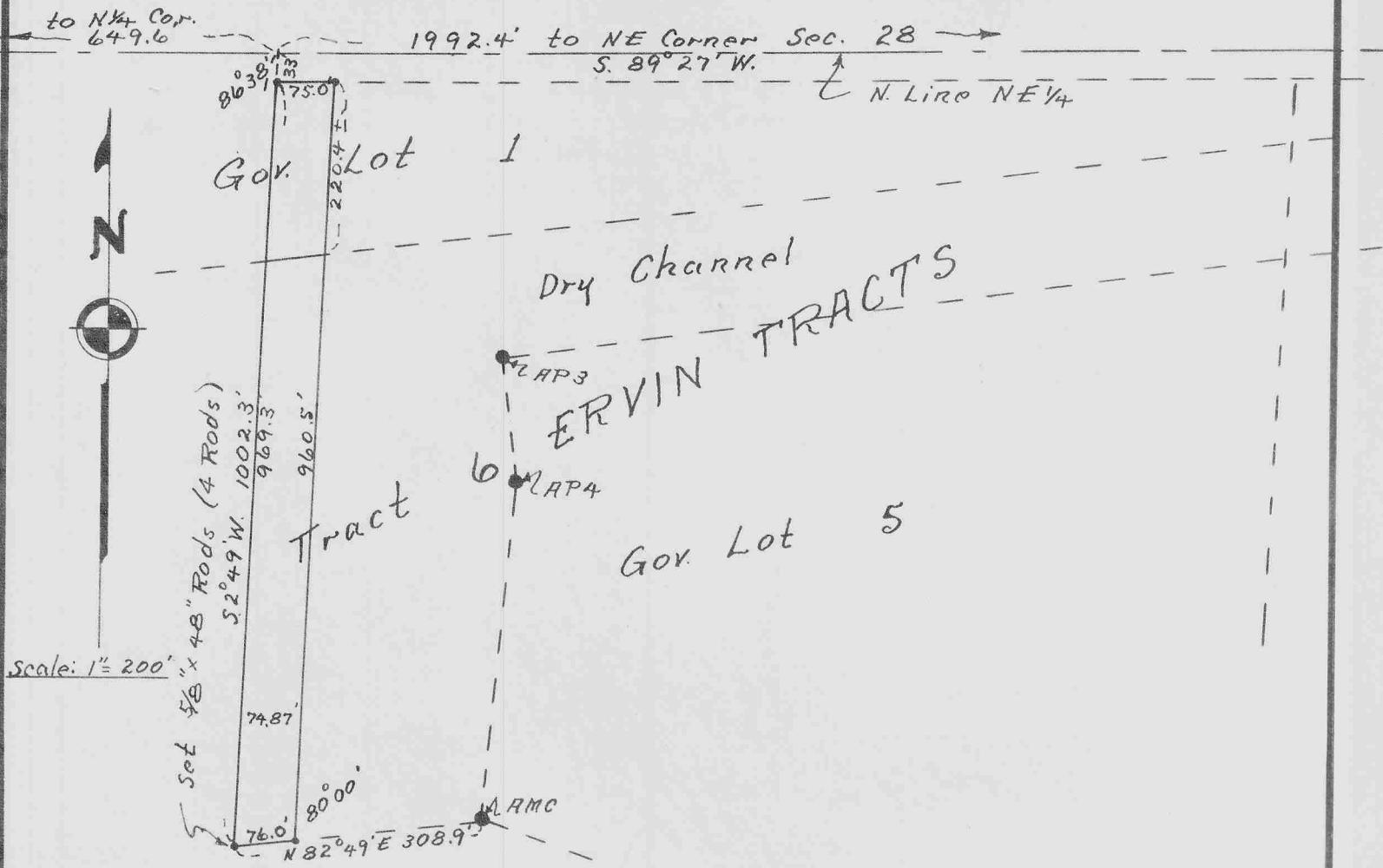


WEST 75.0 FEET (as meas. on N. line) OF TRACT 6 ERVIN TRACTS
 in NE $\frac{1}{4}$ Section 28, Tp. 22 N., R. 55 W.

83623



CERTIFICATE

I hereby certify that I have surveyed the west 75.0 feet of Tract 6 ERVIN TRACTS, in the NE $\frac{1}{4}$ Section 28, Tp. 22 N., R. 55 W. of the 6th. Principal Meridian, Scotts Bluff County, Nebraska, the 75.0 feet being as meas. along N. line Tr. 6.

This plat is a correct delineation of said survey, drawn to the scale of 200 feet to the inch.

The tract includes as deeded land, only the north portion, which is part of Government Lot 1, which is 229 feet more or less as measured along the west line of tract 6, and 220.4 more or less, measured on the east line of the said west 75.0 feet as surveyed.

Witness my hand this 30th. day of November, 1959.



Wm. E. Keefover
 Wm. E. Keefover 15-16 Nebr.

- NUMERICAL
- GENERAL
- TAX REG.
- PICTURED

83623

STATE OF NEBRASKA,)
 SCOTTS BLUFF COUNTY) SS

Entered on Numerical Index and filed for record the 1 day of December 1959 at 10:10 o'clock a.M. and recorded in Book 53 of MISCELLANEOUS on Page 91

Alma L. Tenax
 Register of Deeds

6 Prints