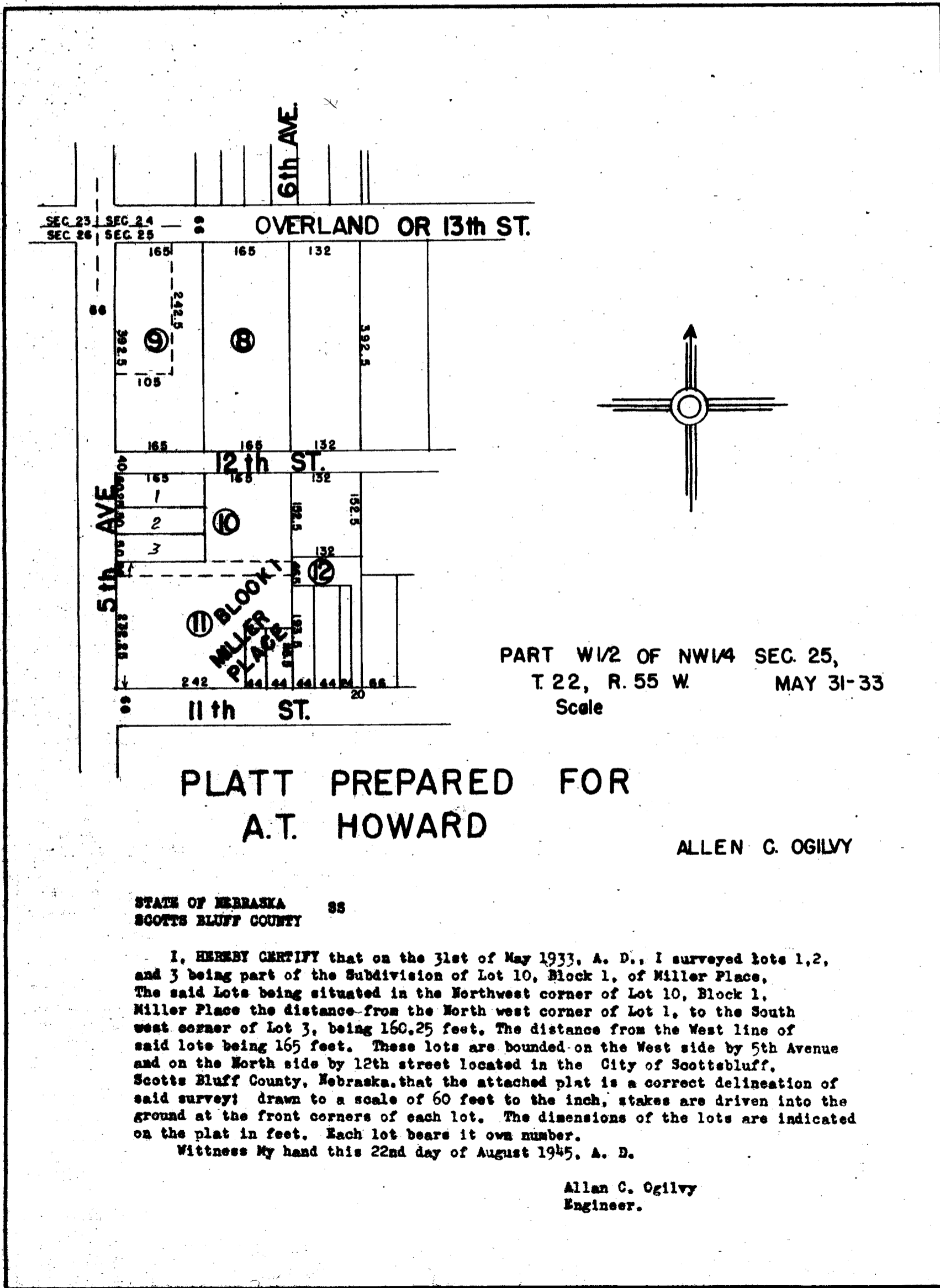


Adam Kerbel
to
The Public

State of Nebraska, Scotts Bluff County, ss.
Entered on Numerical Index and filed for
record the 21st day of September 1945 at 3:10
o'clock P.M. and recorded in Book 53 of Deeds
on Page 5.
Alma L. Truax, Register of Deeds.



PART W1/2 OF NW1/4 SEC. 25,
T. 22, R. 55 W. MAY 31-33
Scale

PLATT PREPARED FOR
A.T. HOWARD

ALLEN C. OGILVY

STATE OF NEBRASKA SS
SCOTTS BLUFF COUNTY

I, HEREBY CERTIFY that on the 31st of May 1933, A. D., I surveyed lots 1, 2, and 3 being part of the Subdivision of Lot 10, Block 1, of Miller Place. The said Lots being situated in the Northwest corner of Lot 10, Block 1, Miller Place the distance from the North west corner of Lot 1, to the South west corner of Lot 3, being 160.25 feet. The distance from the West line of said lots being 165 feet. These lots are bounded on the West side by 5th Avenue and on the North side by 12th street located in the City of Scottsbluff, Scotts Bluff County, Nebraska. that the attached plat is a correct delineation of said survey; drawn to a scale of 60 feet to the inch, stakes are driven into the ground at the front corners of each lot. The dimensions of the lots are indicated on the plat in feet. Each lot bears its own number.
Witness My hand this 22nd day of August 1945, A. D.

Allan C. Ogilvy
Engineer.