

Note: See Subd of Tr 16, Book 60
Page 223,

Note: Tract 16 Subdivided
See 60-331

Note: See Reising Subd. of Tr 4, Adler Tr.
Book 151, Pg 186

Iola Alda Adler and
Rudolph Adler

to

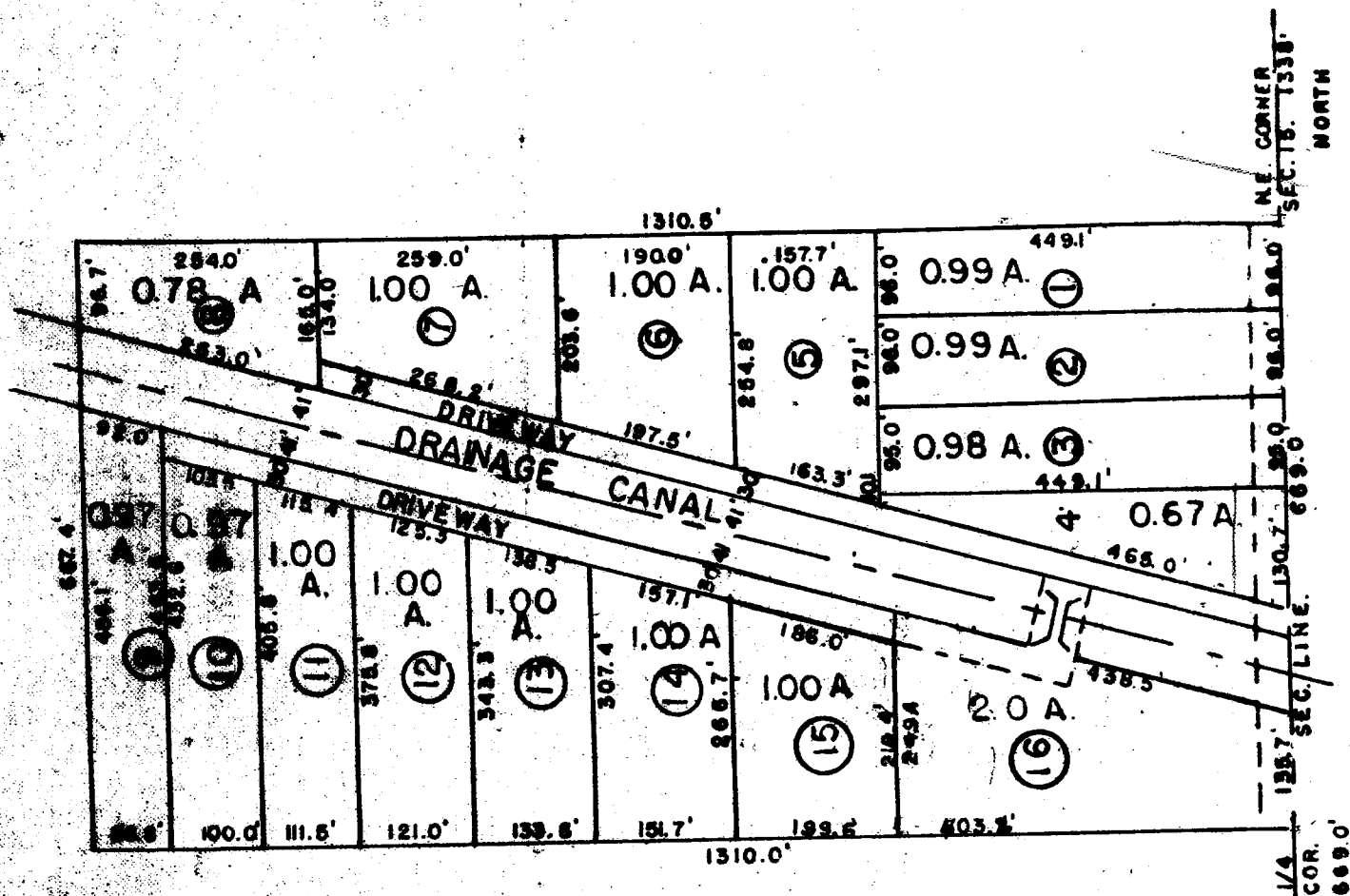
The Public

State of Nebraska, Scotts Bluff County, ss.

Entered on Numerical Index and filed for
record the 15th day of August 1946 at 9:20
o'clock A.M. and recorded in Book 53 of Deeds
on Page 479.

Alma L. Truax, Register of Deeds.

PLAT OF ADLER TRACTS LOCATED IN N. 1/2, SE. 1/4, NE. 1/4, SECTION 15, TOWNSHIP 22 N., RANGE 55 W. OF THE 6th P.M.



I, hereby certify, that on the 7th day of August, 1946, A. D., I accurately surveyed ADLER Tracts located in the north one-half of the northeast one-fourth of section 15, Township 22 north, Range 55 west of the 6th P.M.. This plat is a true delineation of the same drawn to a scale of one inch equals two hundred feet. Stakes are driven into the ground at the corner of each plot. The dimensions of the plots and drives are shown as staked off and each plot bears its own number. Witness my hand this 13th day of August, 1946 A.D..

Otho S. Cooper
Otho S. Cooper,
County Surveyor.



This certifies that the above and foregoing tract of land known as the ADLER TRACTS, as appears on this plat is made with the free consent and in accordance with the desire of the undersigned owners and proprietors, and the driveways as shown on the plat are hereby dedicated to the public use.

In testimony whereof the said owners have executed these presents this 14th day of August, 1946, A.D..

Iola Alda Adler
Rudolph Adler

State of Nebraska
County of Scotts Bluff SS

On this 14th day of August, 1946, A. D., before me, the undersigned, a Notary Public in and for said County and State, personally appeared Rudolph Adler and Iola Alda Adler, husband and wife, and acknowledge the foregoing subdivision and statement to be their voluntary act and deed.

In testimony whereof I have hereunto set my hand and official the date last above written.

My Commission expires July 27, 1949

J. W. Westervelt
Notary Public

