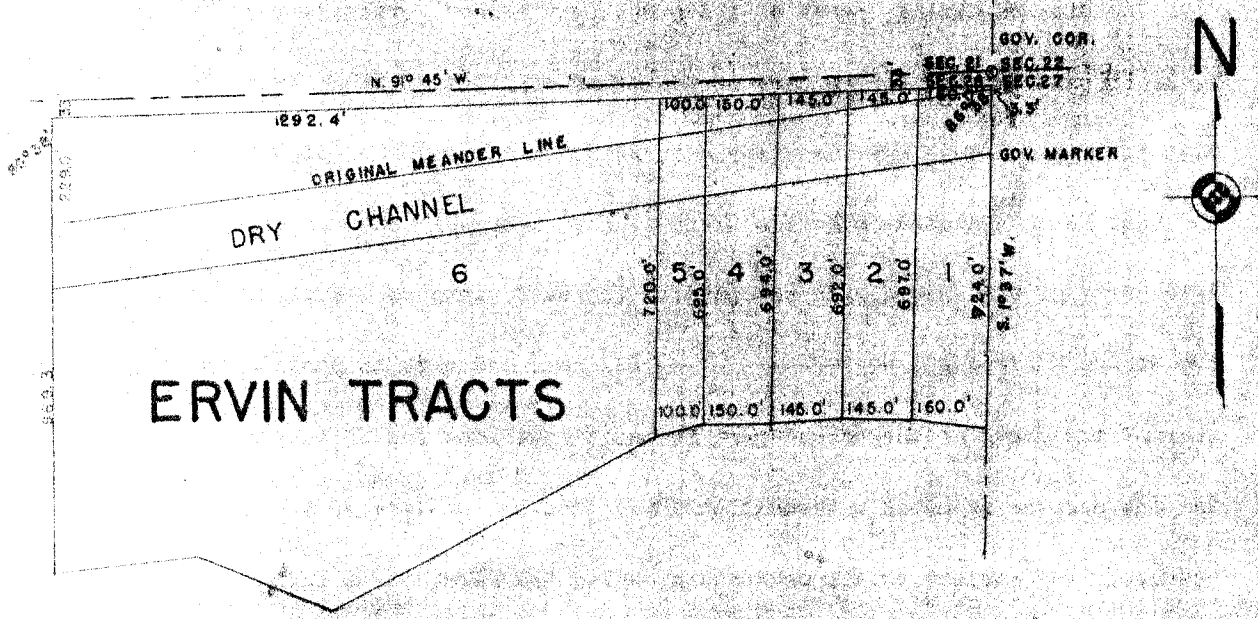


Note: See Lunniss Subdivision of Part of Tract 6 - Book 109, Page 397  
 Note: See Schlichtemiers Subd. (Part of Ervin Tr. + Part of Lunniss Subd.) Book 121, Page 437  
 NOTE: See Block One, HARDEN SUBDIVISION, a subd. of part of Tract 6, Deed 206 Page 437

Stephen F. Ervin and  
 Bethal A. Ervin  
 to  
 The Public

State of Nebraska, Scotts Bluff County, ss.  
 Entered on Numerical Index and filed for  
 record the 25th day of February 1946 at  
 4:50 o'clock P.M. and recorded in Book 53  
 of Deeds on Page 235.  
 Alma L. Truax, Register of Deeds.

# A PORTION OF THE N.E. 1/4 OF SEC. 28, T.22N., R.55W. OF THE 6TH P.M.



I, hereby certify, that during the month of February, 1946, I surveyed tracts 1, 2, 3, 4 & 5, of Ervin Tracts, situated in the North one-half of the North East Quarter of Section, 28, Township 22 North, Range 55 West of the 6th P.M.. Dimensions for Tract 6 were taken from a plat recorded in the Surveyor's Office of Scotts Bluff County, Nebraska.

This plat is a true delineation of said survey and plat drawn to a scale of 300 feet to the inch. Iron stakes are driven in the ground on the back corners of tracts 1, 2, 3, 4 & 5, and at the front corners extended north to the section line. The width of the road and the dimensions of the tracts are indicated on the plat and each tract bears its own number.  
 Witness my hand this 25th day of February, A. D., 1946.

*Otho S. Cooper*  
 Otho S. Cooper, County Surveyor

This certifies that, STEPHEN F. ERVIN and BETHAL A. ERVIN, are the owners of that part of the Northeast Quarter of Section 28, Township 22, North, Range 55 West of the 6th P.M., above described and shown on this plat, on which the Ervin Tracts are located. That the street as shown on the plat is thereby dedicated to the public use.

In testimony whereof, the said owners have executed these presents this 25 day of Feb. A. D. 1946.

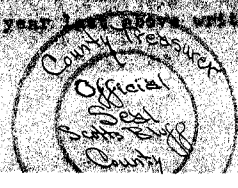
*Stephen F. Ervin*  
*Bethal A. Ervin*

State of Nebraska  
 ss  
 Scotts Bluff County

On this 25 day of Feb. A. D. 1946, before me a notary public in and for said County, appeared Stephen F. Ervin and Bethal A. Ervin, personally known by me to be the identical persons whose names are subscribed to the foregoing instrument and the execution thereof to be their voluntary act and deed.

Witness my hand and seal on the day and year last above written.

My Commission expires \_\_\_\_\_



*Alma L. Truax*  
 Register of Deeds  
 County Treasurer