

DEED RECORD NO. 42

A. B. WOOD, PRINTER, GERING, NEBR.

City of Scottsbluff, Nebraska

State of Nebraska, Scotts Bluff County, ss.

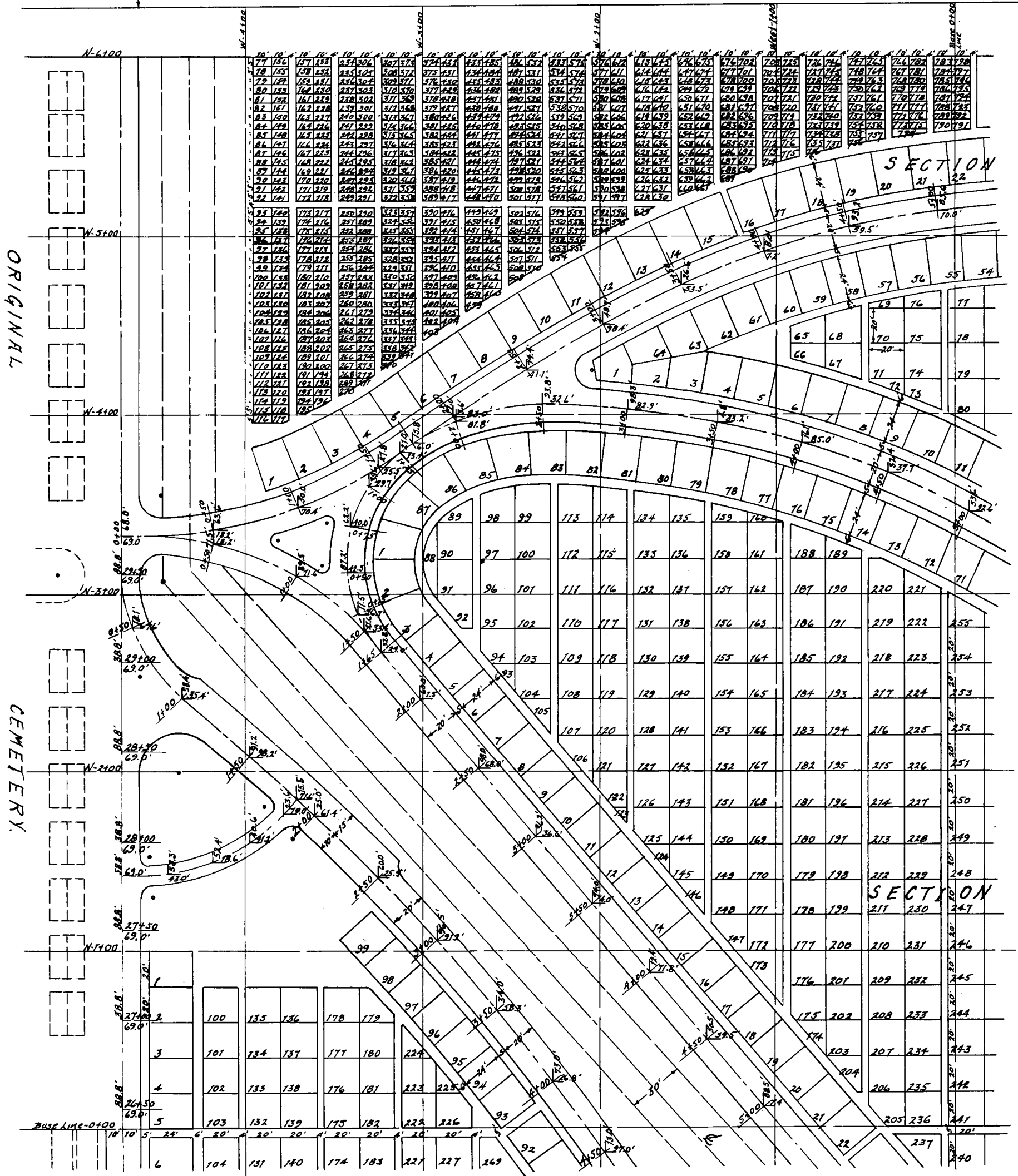
To
The Public

Entered on Numerical Index and filed for record the 8th day of April 1941 at 3:30 o'clock P.M. and recorded in Book 42 of Deeds on Page 474.

E. L. Truax, Register of Deeds.

COUNTY ROAD

NORTH LINE OF SEC. 13, T. 22 N., R. 54 W.



Note: Sec D.. Lots 1-415
 Sec E- lots 1-148
 Sec F. Lots 1-2065
 Vacated by Ord. 2077 Recorded Misc 87-733 (See Replat No. 2 Book 167-421)

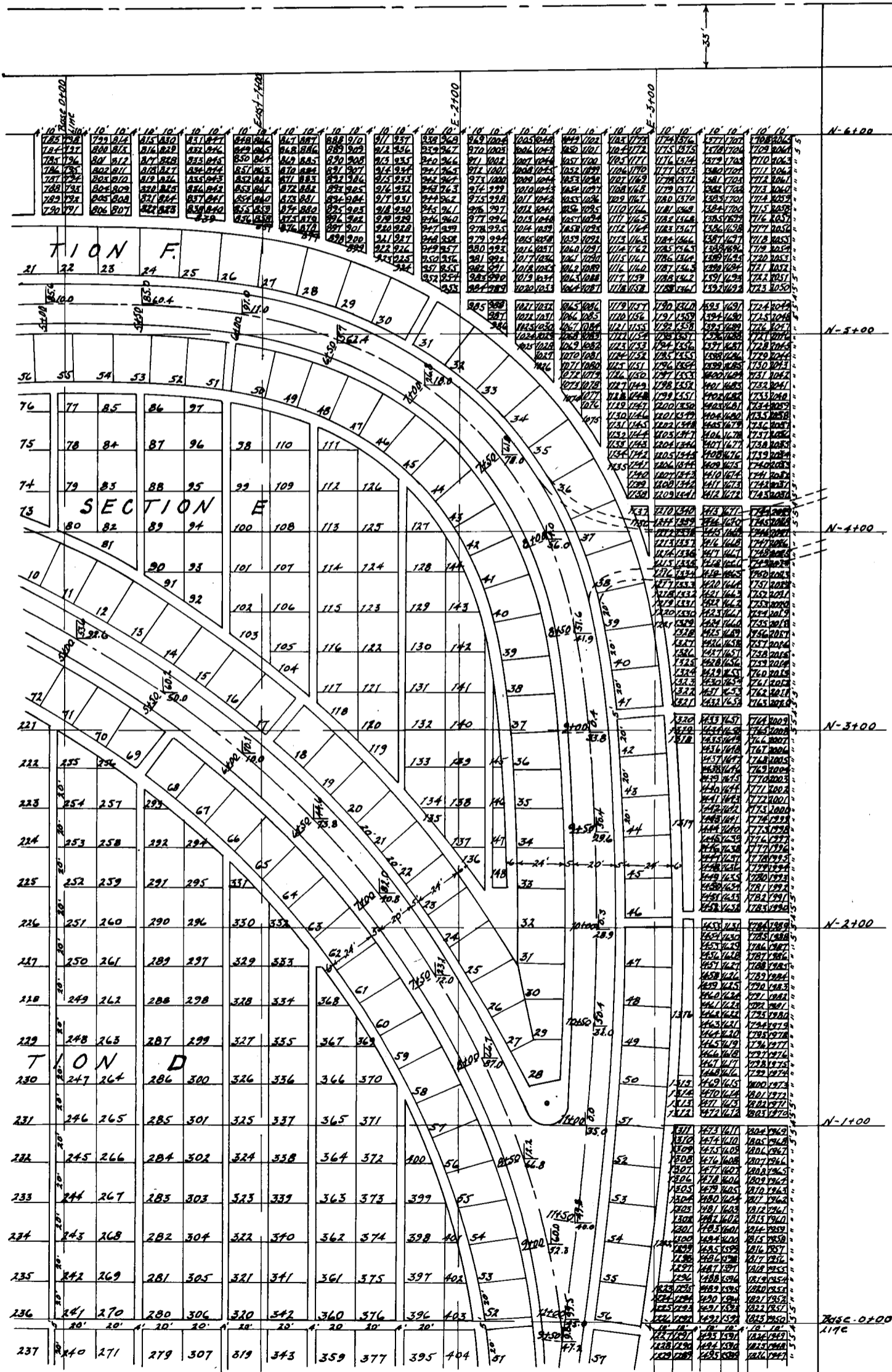
DEED RECORD NO. 42

A. B. WOOD, PRINTER, GERING, NEBR.

RE-PLAT OF PART OF THIRD ADDITION TO FAIRVIEW CEMETERY SCOTTSBLUFF, NEBRASKA.

SCALE 1" = 30'

N



STATE OF NEBRASKA
SCOTTS BLUFF COUNTY SS

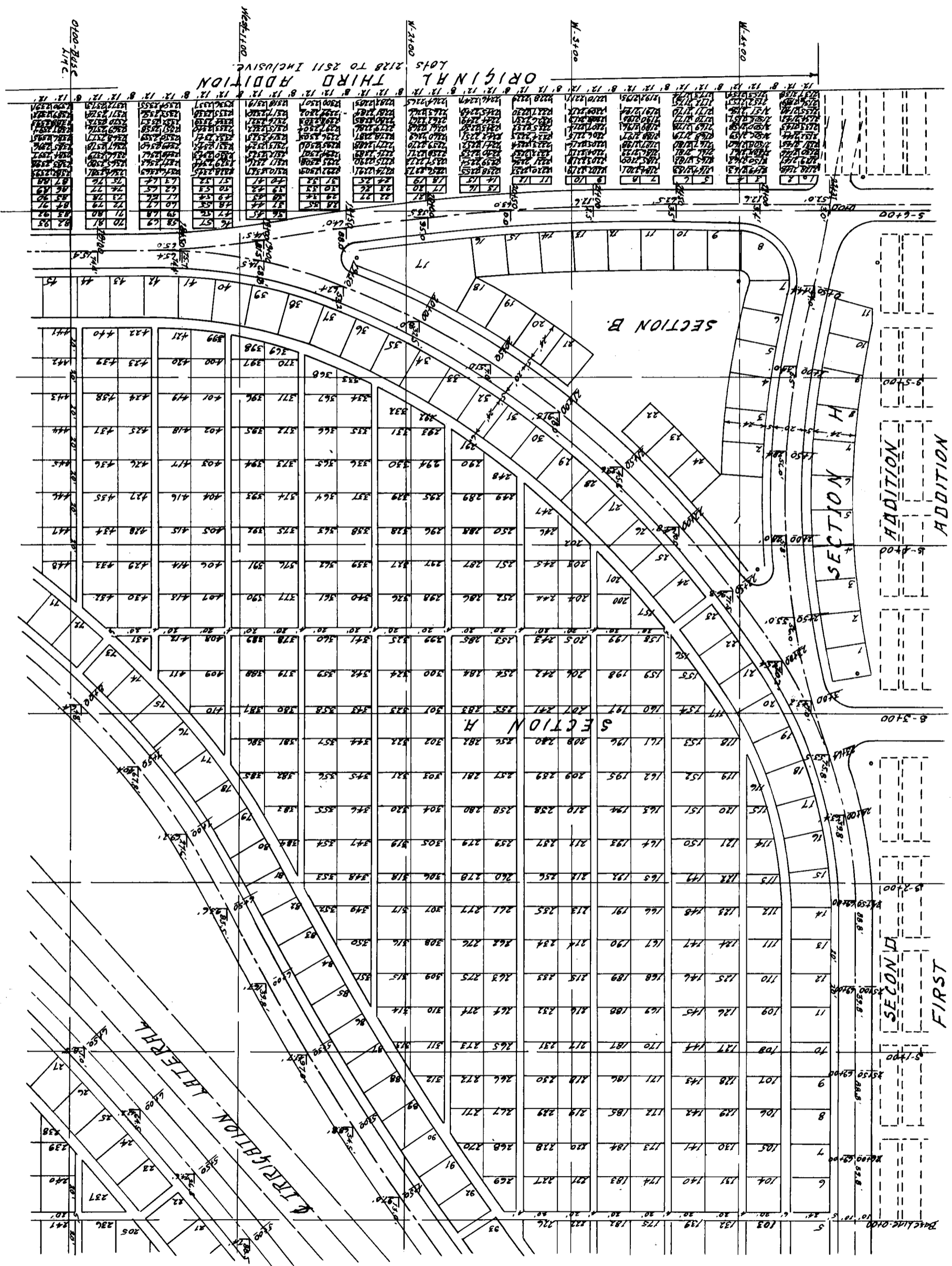
I HEREBY CERTIFY,
THAT THIS RE-PLAT OF
PART OF THIRD ADDITION
TO FAIRVIEW CEMETERY,
SCOTTSBLUFF, NEBRASKA,
LOCATED IN THE NW 1/4 OF
SEC. 13, T. 22 N., R. 55 W., 6TH
P.M. IS WITHIN THE BOUND-
ARY LINES OF THE ORIG-
INAL THIRD ADDITION, EX-
CEPTING ORIGINAL LOTS
2128 TO 2511 INCLUSIVE,
WHICH REMAIN AS ORIG-
INALLY PLATTED.
THIS PLAT IS DRAWN
TO A SCALE OF ONE INCH
EQUALS THIRTY FEET,
DIMENSIONS ARE AS SHOWN
AND EACH LOT BEARS ITS
OWN NUMBER.

DATED - JUNE 5, 1940
H. E. ...
COUNTY SURVEYOR

NOTE :-
DESIGNED BY -
S. R. DE BOER -
LANDSCAPE ARCHITECT,
DENVER, COLO.

DEED RECORD NO. 42

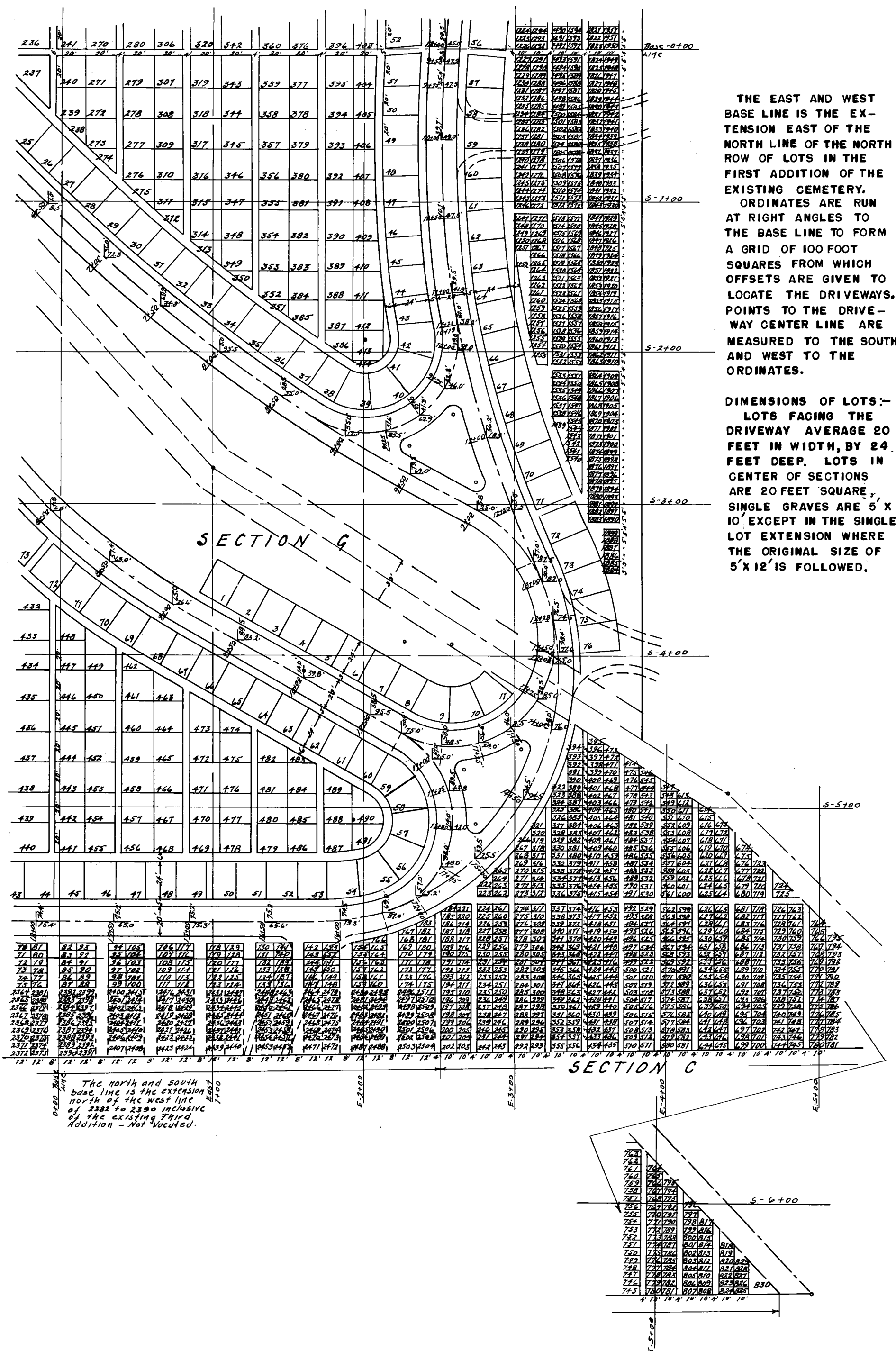
A. B. WOOD, PRINTER, GERING, NEBR.



Note: This drawing reduced to 1" = 60'

DEED RECORD NO. 42

A. B. WOOD, PRINTER, GERING, NEBR.



THE EAST AND WEST BASE LINE IS THE EXTENSION EAST OF THE NORTH LINE OF THE NORTH ROW OF LOTS IN THE FIRST ADDITION OF THE EXISTING CEMETERY. ORDINATES ARE RUN AT RIGHT ANGLES TO THE BASE LINE TO FORM A GRID OF 100 FOOT SQUARES FROM WHICH OFFSETS ARE GIVEN TO LOCATE THE DRIVEWAYS. POINTS TO THE DRIVEWAY CENTER LINE ARE MEASURED TO THE SOUTH AND WEST TO THE ORDINATES.

DIMENSIONS OF LOTS:-
 LOTS FACING THE DRIVEWAY AVERAGE 20 FEET IN WIDTH, BY 24 FEET DEEP. LOTS IN CENTER OF SECTIONS ARE 20 FEET SQUARE, SINGLE GRAVES ARE 5 X 10' EXCEPT IN THE SINGLE LOT EXTENSION WHERE THE ORIGINAL SIZE OF 5 X 12' IS FOLLOWED.

The north and south base line is the extension north of the west line of 2322 to 2390 inclusive of the existing Third Addition - Not Vouched.

SECTION G

E-5+00

S-6+00

830