

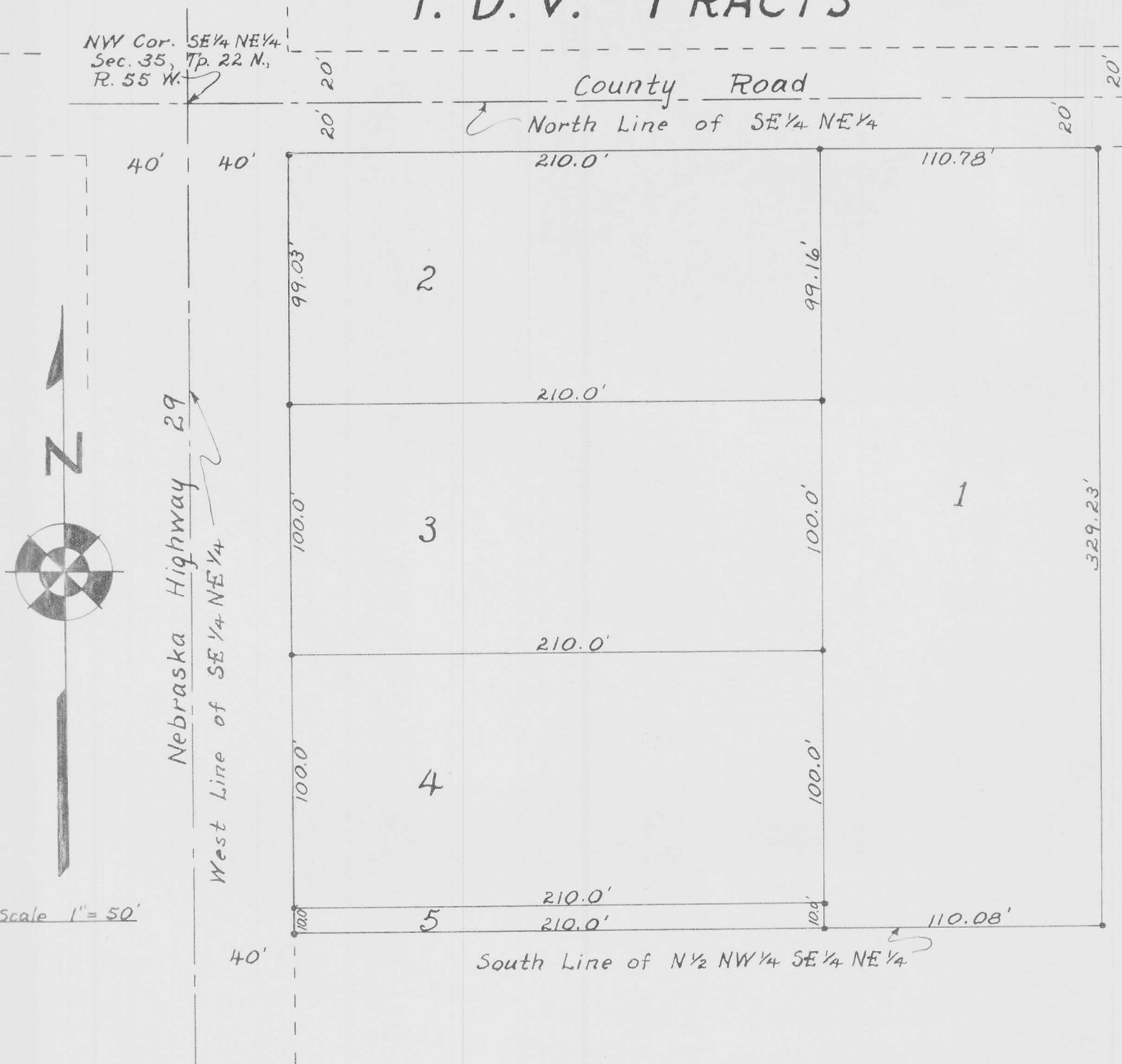
Note: Now plotted as Carl Milton Repl
153-63 1/20/57

NUMBER
GEN. ✓
TAX REG.
PICTURED

STATE OF NEBRASKA,)
SCOTTS BLUFF COUNTY) SS 58216
Entered on Numerical Index and filed for record
the 7th day of January 1953, at 11:40
o'clock A.M. and recorded in Book 40 of
MISCELLANEOUS on Page 77.
Alma L. Linn
REGISTER OF DEEDS
By: _____ Deputy

F. D. V. TRACTS

NW Cor. SE 1/4 NE 1/4
Sec. 35, Tp. 22 N.,
R. 55 W.



THIS IS TO CERTIFY: That on January 5th, 1953, I, O. M. Finley, accurately surveyed the F. D. V. Tracts, situated on the N 1/2 NW 1/4 SE 1/4 NE 1/4 except the East 300.0 feet thereof, Section 35, Tp. 22 N., R. 55 W. of the 6th P.M. Scotts Bluff County, Nebraska, Surveyed and Platted By Stipulation of Interested Parties, Wilbur L. and Phyllis L. Van Patten, Ted and Mabel E. Dalgren, h & w, and Linus J. and Pearl Fangman, h & w. - and by Order of the District Court, Gering Nebraska, in Case No. 12814 under date of January 3rd, 1953.

That this plat is a correct delineation of said survey drawn to the scale of 50 feet to the inch. Tracts are numbered 1 to 5 inclusive, and 3/4" ϕ iron rods are driven well into the ground, top of rods slightly above ground, at all corners of each tract. Each tract bears its own number, and dimensions are shown in feet and decimals.

WITNESS MY HAND this 6th day of January, 1953.

O. M. Finley
County Surveyor

