

DEED RECORD 38

Star Herald Printing Co., Scottsbluff, Nebr.

The School District of Scottsbluff,
Nebraska,

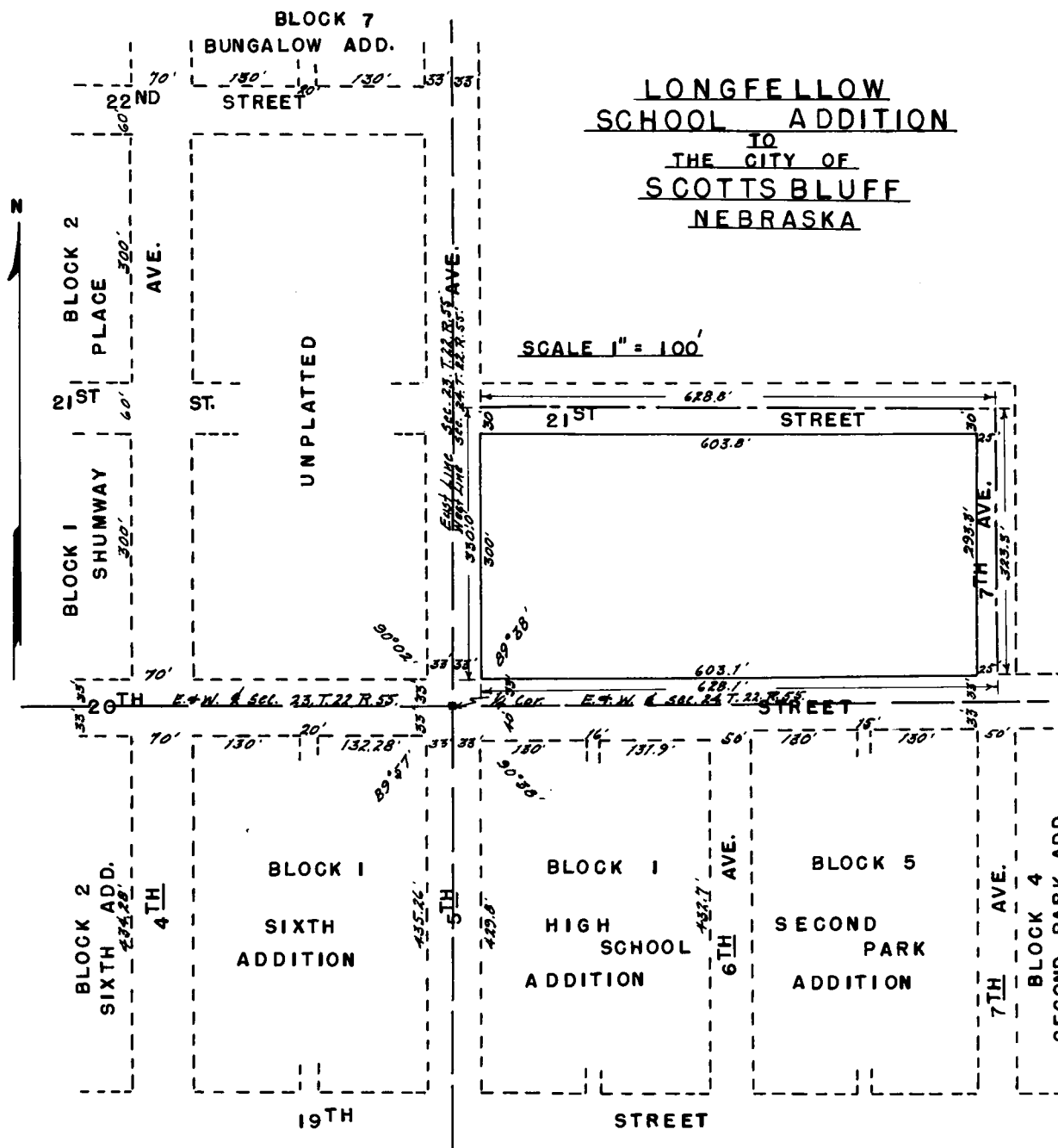
State of Nebraska, Scotts Bluff County, ss

To the Public

Entered on Numerical Index and filed
for record the 1st day of May, 1939 at 11:15
o'clock A.M. and recorded in Book 38 of Deeds
on Page 613.

E. L. Truax,

Register of Deeds



STATE OF NEBRASKA SS
SCOTTS BLUFF COUNTY

I HEREBY CERTIFY THAT ON THE 3RD DAY OF DECEMBER 1938 I ACCURATELY SURVEYED "LONGFELLOW SCHOOL ADDITION" TO THE CITY OF SCOTTSBLUFF, SCOTTS BLUFF COUNTY, NEBRASKA, SITUATED ON A PART OF THE SW 1/4 NW 1/4 OF SEC. 24, TP22N, R. 55 W 6TH P.M. MORE FULLY DESCRIBED AS FOLLOWS:-

BEGINNING AT A POINT 33 FEET EAST AND 33 FEET NORTH OF THE WEST QUARTER CORNER OF SEC. 24, TP. 22N, R. 55W 6TH P.M. THENCE NORTH PARALLEL TO AND 33 FT. EAST FROM THE WEST LINE OF SAID SEC. FOR A DISTANCE OF 330 FT. TO THE CENTER LINE EXTENDED EAST OF 21ST STREET IN THE CITY OF SCOTTS BLUFF, NEBRASKA; THENCE EAST ALONG SAID CENTER LINE OF 21ST STREET EXTENDED EAST FOR A DISTANCE OF 628.8 FT. TO THE CENTER LINE EXTENDED NORTH OF 7TH AVE. IN THE CITY OF SCOTTSBLUFF, NEBRASKA; THENCE SOUTH ALONG SAID EXTENDED CENTER LINE OF 7TH AVE. FOR A DISTANCE OF 323.3 FT. TO A POINT 33 FT. NORTH OF THE EAST AND WEST CENTER LINE OF SAID SEC. THENCE WEST PARALLEL TO AND 33 FT. NORTH FROM THE SAID EAST AND WEST CENTER LINE OF SEC. FOR A DISTANCE OF 628.1 FT. TO THE POINT OF BEGINNING, AND CONTAINING 4.71 ACRES MORE OR LESS.

THE ANNEXED PLAT IS A CORRECT DELINEATION OF SAID SURVEY, DRAWN TO A SCALE OF 100 FT. TO THE INCH WITH DIMENSIONS CLEARLY SHOWN AND THE SOUTH HALF OF THE CONTINUATION OF 27TH STREET AND THE WEST HALF OF 7TH AVE. INDICATED AND CONFORMING TO THE SAID STREET AND AVENUE IN THE ADJACENT ADDITIONS.

WITNESS MY HAND THIS
21ST DAY OF APRIL, 1939.

H. E. Brown
COUNTY SURVEYOR

STATE OF NEBRASKA SS
SCOTTS BLUFF COUNTY

ON THIS 21ST DAY OF APRIL, 1939, BEFORE ME THE UNDERSIGNED, ESTHER HAMILTON, A NOTARY PUBLIC IN AND FOR SAID COUNTY, PERSONALLY COME FRANK W. PLEHN, PRESIDENT OF THE BOARD OF EDUCATION OF THE SCHOOL DISTRICT OF SCOTTSBLUFF, IN THE COUNTY OF SCOTTS BLUFF, IN THE STATE OF NEBRASKA, TO ME PERSONALLY KNOWN TO BE THE PRESIDENT AND THE IDENTICAL PERSON WHOSE NAME IS AFFIXED TO THE ABOVE INSTRUMENT AND ACKNOWLEDGED THE EXECUTION THEREOF TO BE HIS VOLUNTARY ACT AND DEED AS SUCH OFFICER AND THE VOLUNTARY ACT AND DEED OF THE SAID SCHOOL DISTRICT OF SCOTTSBLUFF IN THE COUNTY OF SCOTTS BLUFF, IN THE STATE OF NEBRASKA, AND THAT THE CORPORATE SEAL OF THE SAID SCHOOL DISTRICT OF SCOTTSBLUFF, IN THE COUNTY OF SCOTTS BLUFF, IN THE STATE OF NEBRASKA, WAS THERETO AFFIXED BY ITS AUTHORITY.

WITNESS MY HAND AND NOTARIAL SEAL AT SCOTTSBLUFF IN SAID COUNTY THE DAY AND YEAR LAST ABOVE WRITTEN.

Esther Hamilton
NOTARY PUBLIC

COMMISSION EXPIRES
FEBRUARY 1, 1941

[SEAL]

STATE OF NEBRASKA SS
SCOTTS BLUFF COUNTY

THIS CERTIFIES THAT THE UNDERSIGNED, THE SCHOOL DISTRICT OF SCOTTSBLUFF, IN THE COUNTY OF SCOTTS BLUFF, IN THE STATE OF NEBRASKA, IS THE OWNER OF THE FOLLOWING DESCRIBED LAND:

BEGINNING AT A POINT 33 FT. EAST AND 33 FT. NORTH OF THE WEST QUARTER CORNER OF SEC. 24, TP. 22N, R. 55W 6TH P.M. THENCE NORTH PARALLEL TO AND 33 FT. EAST FROM THE WEST LINE OF SAID SEC. FOR A DISTANCE OF 330 FT. TO THE CENTER LINE EXTENDED EAST OF 21ST STREET IN THE CITY OF SCOTTSBLUFF, NEBRASKA; THENCE EAST ALONG SAID CENTER LINE OF 21ST STREET EXTENDED EAST FOR A DISTANCE OF 628.8 FT. TO THE CENTER LINE EXTENDED NORTH OF 7TH AVE. IN THE CITY OF SCOTTSBLUFF, NEBRASKA; THENCE SOUTH ALONG SAID EXTENDED CENTER LINE OF 7TH AVE. FOR A DISTANCE OF 323.3 FT. TO A POINT 33 FT. NORTH OF THE EAST AND WEST CENTER LINE OF SAID SEC. THENCE WEST PARALLEL TO AND 33 FT. NORTH FROM THE SAID EAST AND WEST CENTER LINE OF SAID SEC. FOR A DISTANCE OF 628.1 FEET TO THE POINT OF BEGINNING AND CONTAINING 4.71

MENTIONED IN THE FOREGOING SURVEYOR'S CERTIFICATE AND SHOWN ON THE ABOVE PLAT AS "LONGFELLOW SCHOOL ADDITION" TO THE CITY OF SCOTTSBLUFF, NEBRASKA; THAT THE SAID SCHOOL DISTRICT OF SCOTTSBLUFF IN THE COUNTY OF SCOTTS BLUFF, IN THE STATE OF NEBRASKA, HAS CAUSED THE SAID LAND TO BE SURVEYED AS ABOVE SHOWN; THAT THE STREETS SHOWN ON THE PLAT ARE HEREBY DEDICATED TO THE PUBLIC USE.

IN TESTIMONY WHEREOF THE SAID THE SCHOOL DISTRICT OF SCOTTSBLUFF, IN THE COUNTY OF SCOTTS BLUFF, IN THE STATE OF NEBRASKA, HAS EXECUTED THESE PRESENTS THIS 21ST DAY OF APRIL, 1939.

THE SCHOOL DISTRICT OF SCOTTSBLUFF
IN THE COUNTY OF SCOTTS BLUFF
IN THE STATE OF NEBRASKA

BY- *Frank W. Plehn* PRESIDENT

ATTEST: *Paul F. Stuve* SECRETARY

[SEAL]

THE WITHIN PLAT WAS SUBMITTED TO AND APPROVED BY THE MAYOR & COUNCIL OF THE CITY OF SCOTTSBLUFF, NEBRASKA THIS 27TH DAY OF APRIL 1939.

WITNESS MY HAND AND OFFICIAL SEAL OF SAID CITY.

ATTEST: *H. E. Brown* CITY CLERK
A. J. Howard MAYOR

[SEAL]