

FAIRVIEW CEMETERY

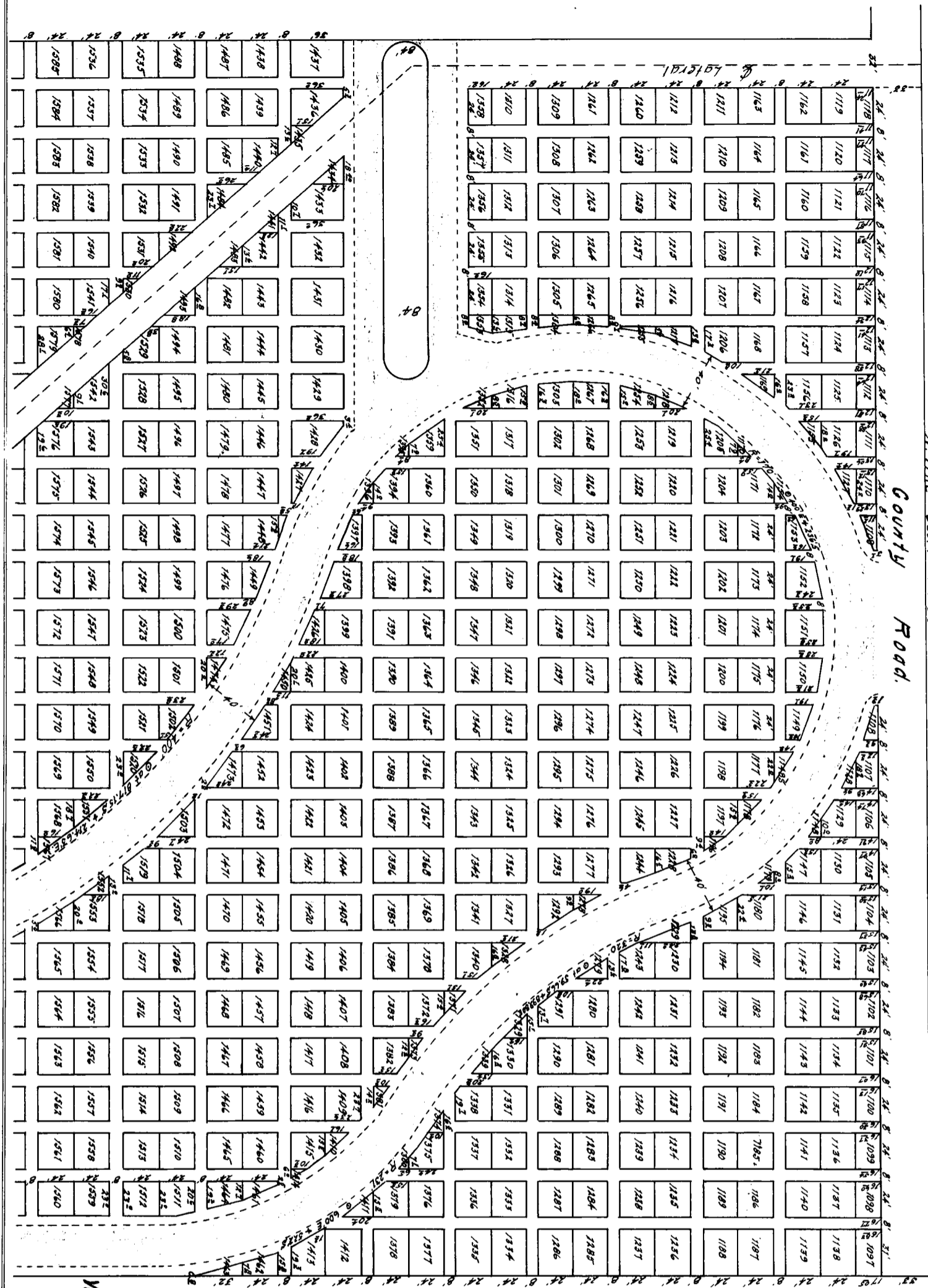
THIRD ADDITION

SCOTTSBLUFF, NEBRASKA.

Scale 1"=40'

N. 1/4 Sec. 13-22-53

N. 35.5 E. 331'



Fairview Cemetery

to

The Public Use

State of Nebraska, Scotts Bluff County, ss.
 Entered on Numerical Index and filed for
 record the 16th day of August 1932 at 8 o'clock
 A.M. and recorded in Book 29 of Deeds on pages
 110 and 111.
 Chester R. Barton, Register of Deeds.

PLAT

DEED RECORD No. 29

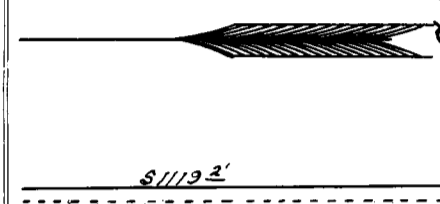
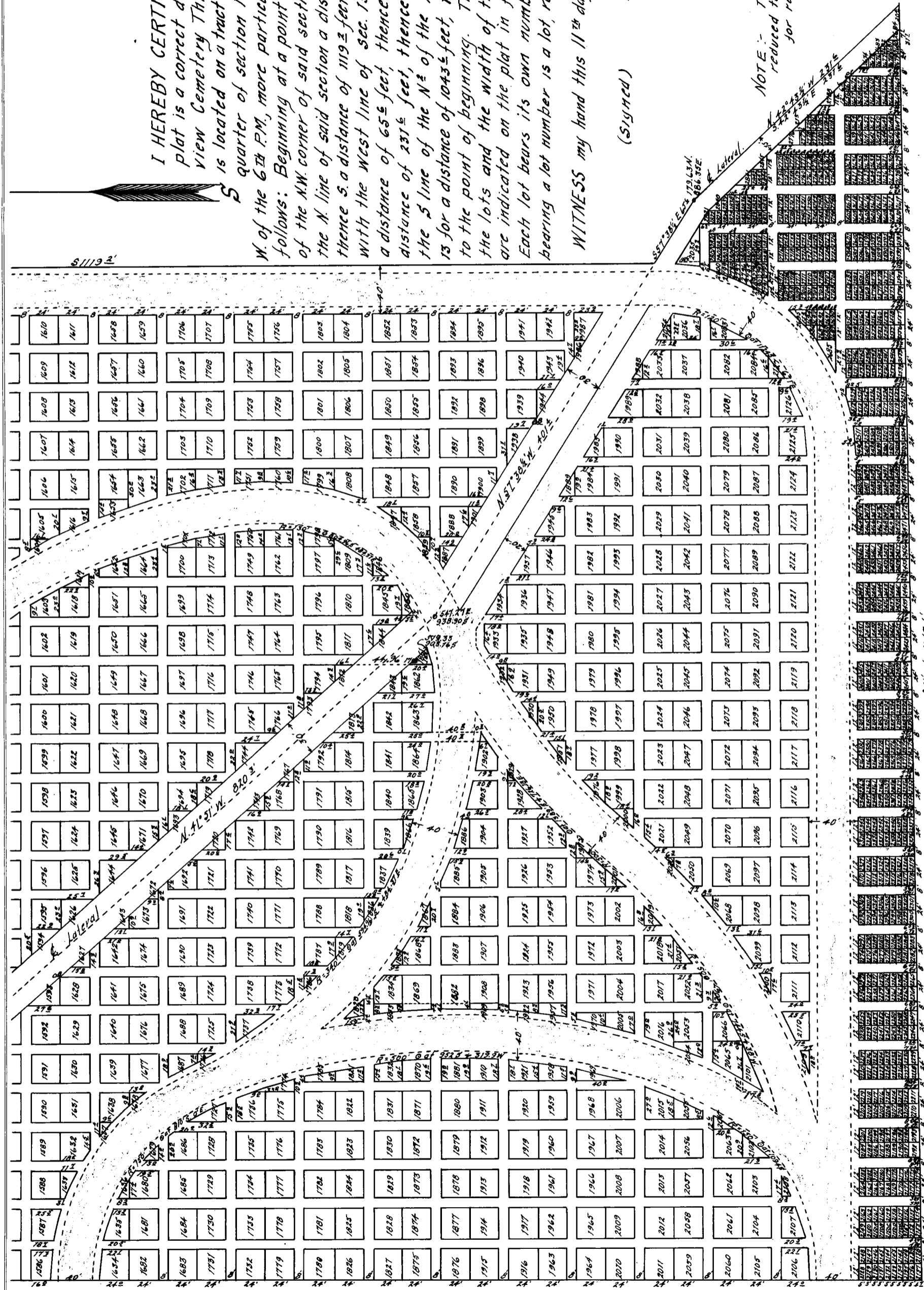
L.L. BROWN & CO. PAPER CO. LINEN LEADER FLEXIBLE HINGE

295779—OMAHA PRINTING CO., OMAHA

I HEREBY CERTIFY that the annexed plat is a correct delineation of Fairview Cemetery Third Addition, which is located on a tract of land in the N.W. quarter of section 13, Twp. 22 N. of R. 55 W. of the 6th P.M., more particularly described as follows: Beginning at a point which is 660' E. of the N.W. corner of said section 13, thence E. along the N line of said section a distance of 831 feet, thence S. a distance of 119 1/2 feet on a line parallel with the West line of sec. 13, thence S. 57° 38 1/2' E. a distance of 65 1/2 feet, thence S. 42° 43 1/2' E. a distance of 231 1/2 feet, thence S. 89° 16' W. along the S line of the N 1/4 of the N.W. 1/4 of said section 13 for a distance of 1043 1/2 feet, thence N. 1333 1/2 feet to the point of beginning. The dimensions of the lots and the width of the roads and alleys are indicated on the plat in feet and decimals. Each lot bears its own number. Every tract bearing a lot number is a lot, regardless of size.

WITNESS my hand this 11th day of February, A.D. 1932.
 (SIGNED) A. L. Seitzer
 Surveyor.

NOTE: The original plat reduced to inch - 80 feet for recording.



S. 89° 16' W. 1043.6

N. 1333.7