

COURIER PRESS-GEORGE

The Henry Farms, Incorporated

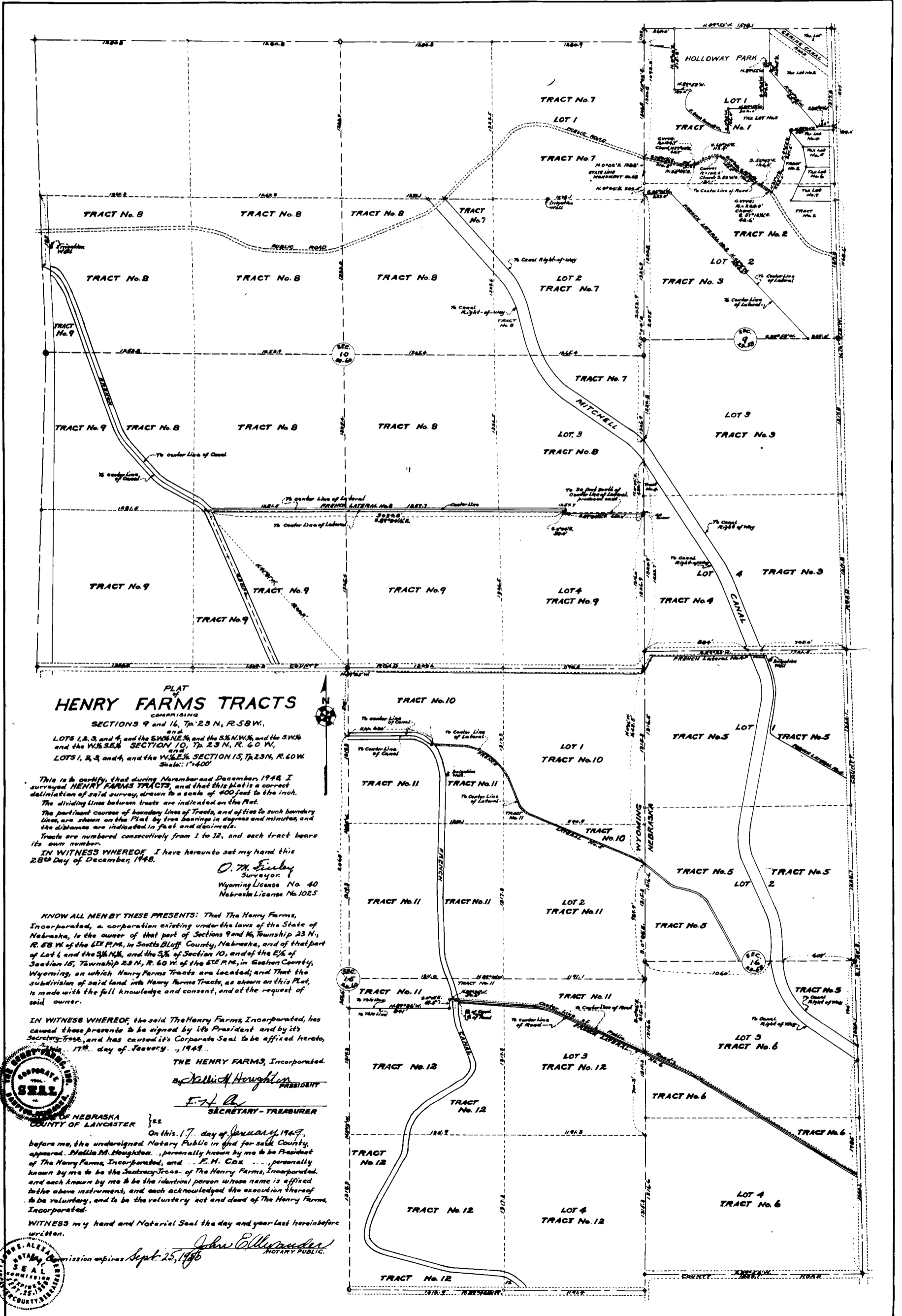
to

Whom Concerned

State of Nebraska, Scotts Bluff County, ss. Entered on Numerical Index and filed for record the 31 day of January 1949 at 2:40 o'clock P.M. and recorded in Book 27 of Miscellaneous on Page 269.

Alma L. Truax, Register of Deeds.

.....



PLAT OF HENRY FARMS TRACTS

COMPRISING SECTIONS 9 and 16, Twp. 23 N., R. 58 W., and the SW 1/4, S 1/4, and 3/4 of Section 10, and the SW 1/4, S 1/4, and 3/4 of Section 15, Twp. 23 N., R. 60 W., Sec. 10 and 15, 17'400'

This is to certify that during November and December, 1948, I surveyed HENRY FARMS TRACTS, and that this plat is a correct delineation of said survey, drawn to a scale of 400 feet to the inch. The dividing lines between tracts are indicated on the Plat. The pertinent courses of boundary lines of Tracts, and of ties to such boundary lines, are shown on the Plat by true bearings in degrees and minutes, and the distances are indicated in feet and decimals. Tracts are numbered consecutively from 1 to 12, and each tract bears its own number. IN WITNESS WHEREOF, I have hereunto set my hand this 28th Day of December, 1948.

O. W. Eschby Surveyor Wyoming License No. 40 Nebraska License No. 1025

KNOW ALL MEN BY THESE PRESENTS: That The Henry Farms, Incorporated, a corporation existing under the laws of the State of Nebraska, is the owner of that part of Sections 9 and 16, Township 23 N., R. 58 W. of the 6th P.M., in Scotts Bluff County, Nebraska, and of that part of Lot 1, and the SW 1/4, S 1/4, and 3/4 of Section 10, and of the E 1/4 of Section 15, Township 23 N., R. 60 W. of the 6th P.M., in Gosper County, Wyoming, in which Henry Farms Tracts are located; and that the subdivision of said land into Henry Farms Tracts, as shown on this Plat, is made with the full knowledge and consent, and at the request of said owner.

IN WITNESS WHEREOF, the said The Henry Farms, Incorporated, has caused these presents to be signed by its President and by its Secretary-Treasurer, and has caused its Corporate Seal to be affixed hereto, this 17th day of January, 1949.

THE HENRY FARMS, Incorporated. by Nellie M. Houghton, PRESIDENT F. H. Cox, SECRETARY-TREASURER



On this 17th day of January, 1949, before me, the undersigned Notary Public in and for said County, appeared, Nellie M. Houghton, personally known by me to be President of The Henry Farms, Incorporated, and F. H. Cox, personally known by me to be the Secretary-Treasurer of The Henry Farms, Incorporated, and each known by me to be the identical person whose name is affixed to the above instrument, and each acknowledged the execution thereof to be voluntary, and to be the voluntary act and deed of The Henry Farms, Incorporated.

WITNESS my hand and Notarial Seal the day and year last hereinbefore written. John E. Anderson, NOTARY PUBLIC. Commission expires Sept. 25, 1950



AEA008