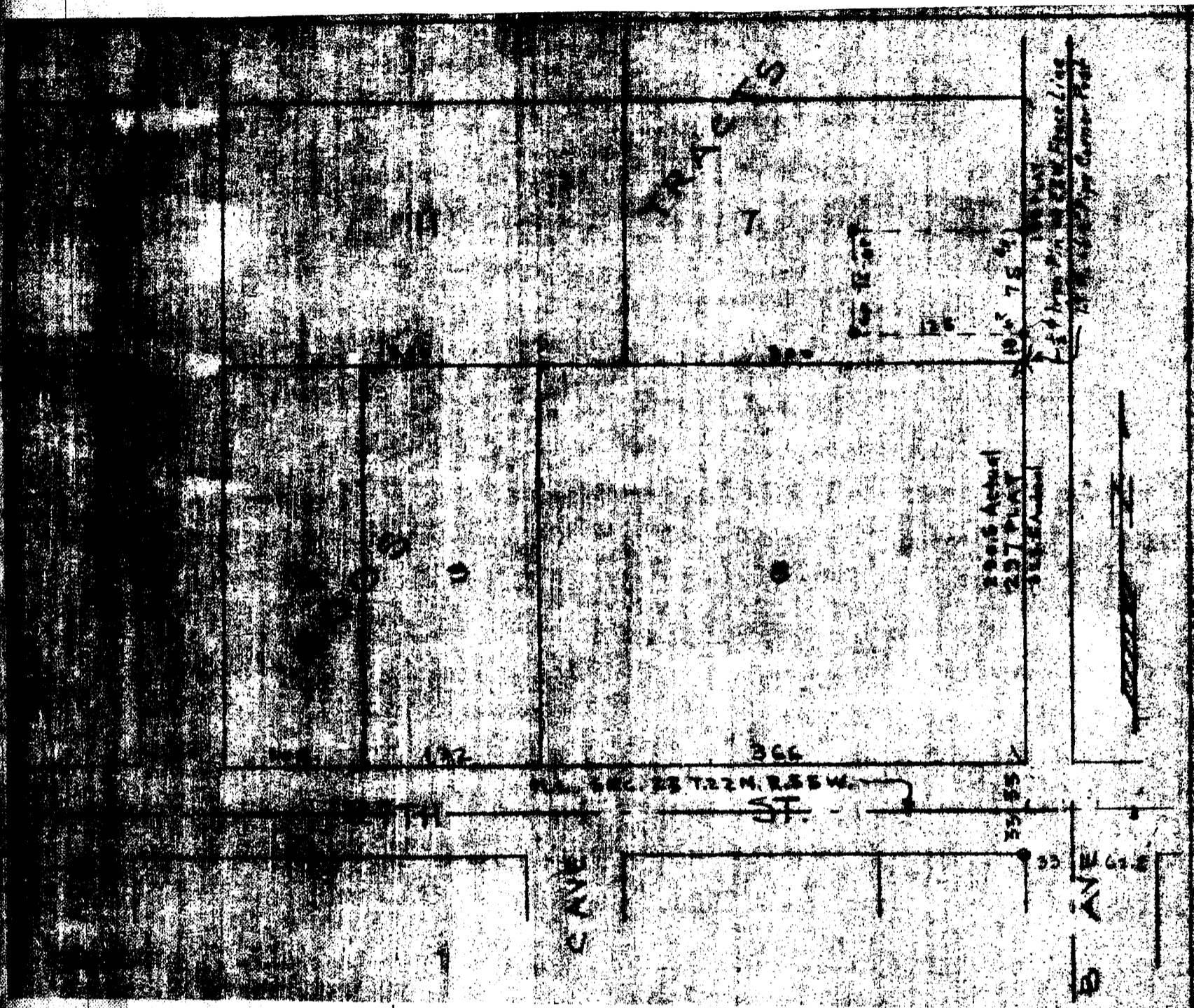


E. Y. Grupe,  
Civil Engineer

to  
Persons Concerned

State of Nebraska, Scotts Bluff County, ss.  
Entered on Numerical Index and filed for  
record the 5th day of April 1946 at 10:35  
o'clock A.M. and recorded in Book 25 of Mis-  
cellaneous on Page 25.  
Alma L. Truax, Register of Deeds.

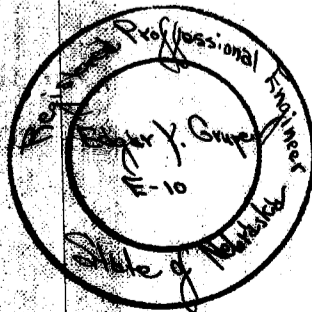


STATE OF Nebraska )  
Scotts Bluff COUNTY ) ss.

I hereby certify that on the 28th day of March 1946, I surveyed A part of Tract Seven (7), Goos Tracts, Scotts Bluff County, Nebraska, more particularly as follows: Beginning at a point marked with a 3/4 inch pipe on the East Line of Tract 7 Goos Tracts located 341.5 feet North of the North Line Section 23, Township 22, North Range 55 West of the 6th P.M. (said point being 18 feet North of a 1/2 inch pipe located on the East and West fence line as referred to in Case No. 8322 in the District Court of Scotts Bluff County, Nebraska, said fence being 323.5 feet North of the North Line Section 23, Township 22, North Range 55, West of 6th P.M.) thence North 75 feet along the East Line of Tract 7, thence West 125 feet, thence South 75 feet, thence East 125 feet to the point of beginning; and I further certify that the above plat is a true delineation of the same.

E. Y. Grupe

E. Y. Grupe, Civil Engineer  
Reg. No. E10



E. Y. Grupe Civil Engineer  
Scottsbluff Nebr 3-28-46  
Scale 1" = 100'