

Otho S. Cooper,  
County Surveyor.

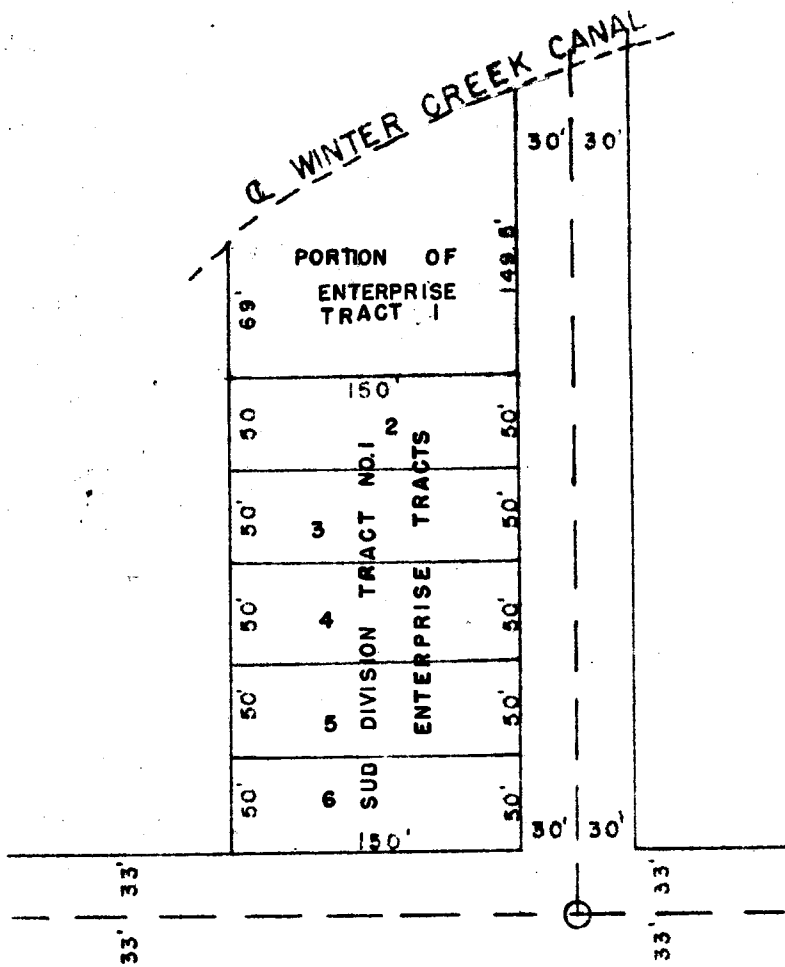
to

Whom Concerned

State of Nebraska, Scotts Bluff County, ss.  
Entered on Numerical Index and filed for  
record the 15th day of January 1946 at 9:00  
o'clock A.M. and recorded in Book 24 of  
Miscellaneous on Page 555.

Alma L. Truax, Register of Deeds.

**A PORTION OF TRACT I ENTERPRISE TRACTS  
SECTION 23, TOWNSHIP 22 N., RANGE 55 W.  
OF THE 6TH P.M.**



**STATE OF NEBRASKA      SS**  
**COUNTY OF SCOTTS BLUFF**

I, certify that, on the 10th day of January, 1946, A. D., I surveyed  
a portion of tract No. 11, Enterprise Tracts, in Section 23, Township 22  
north, Range 55 West of the 6th P.M., and that the above plat is a true  
delineation of the same drawn to the scale of one inch equals 100 feet.

*Otho S. Cooper*  
Otho S. Cooper,  
County Surveyor.