

MONUMENT VIEW ADDITION TO THE CITY OF GERING, LOTS 1 - 14, BLOCK 2

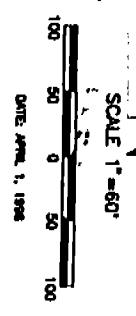
LOCATED IN THE NORTHEAST QUARTER OF SECTION 3,
TOWNSHIP 21 NORTH, RANGE 55 WEST OF THE 6TH P.M.,
SCOTTS BLUFF COUNTY, NEBRASKA.

4089

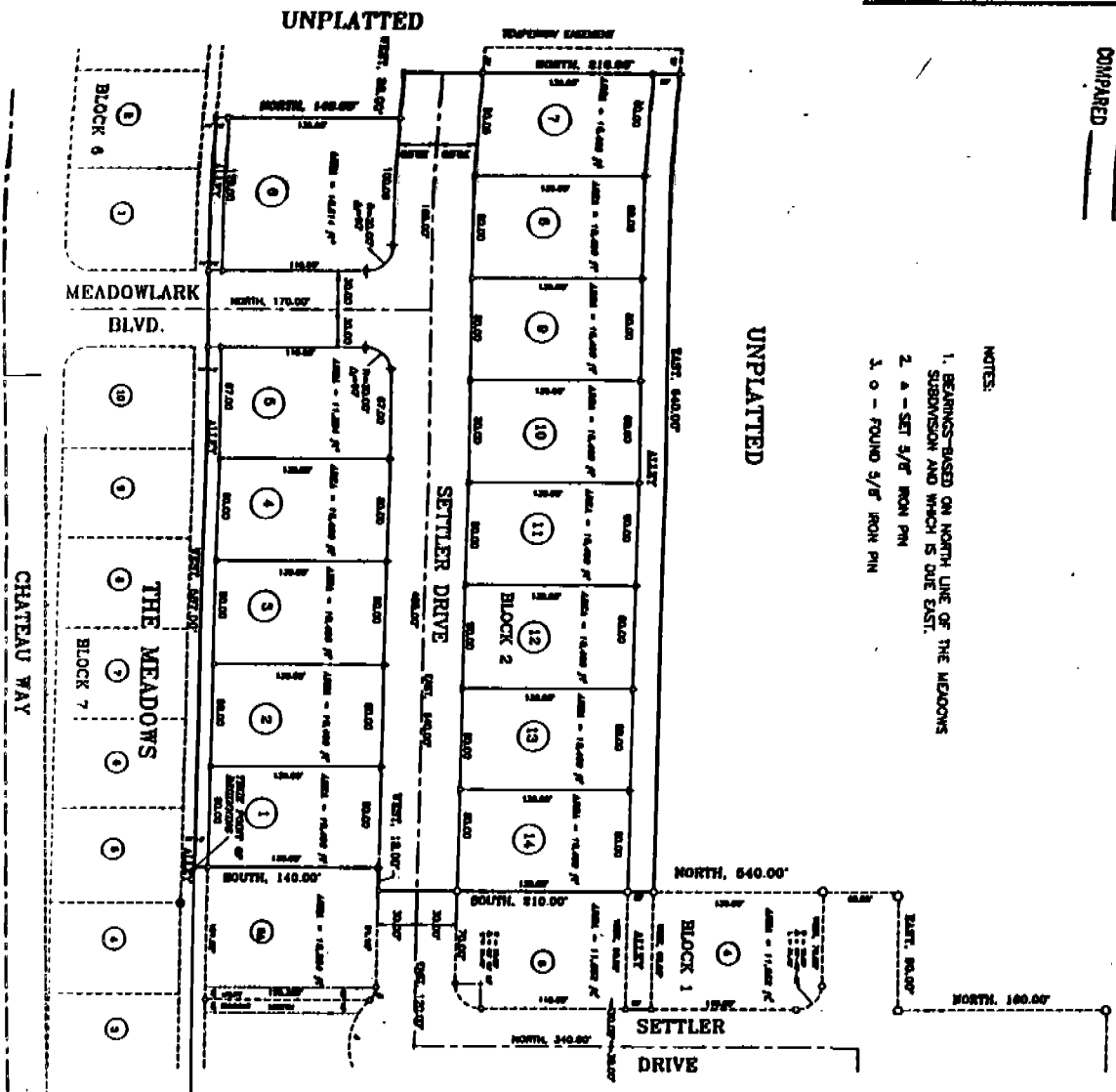
MONUMENT VIEW ADDITION TO THE CITY OF GERING, LOTS 1 - 14, BLOCK 2

State of Nebraska, Scotts Bluff County ss.
Entered in Numerical Index and filed for
record the 8 day of June, 1922
at 3:45 o'clock P.M. and recorded in
Book 216 of
on page 357
By _____
Register of Deeds
Deputy

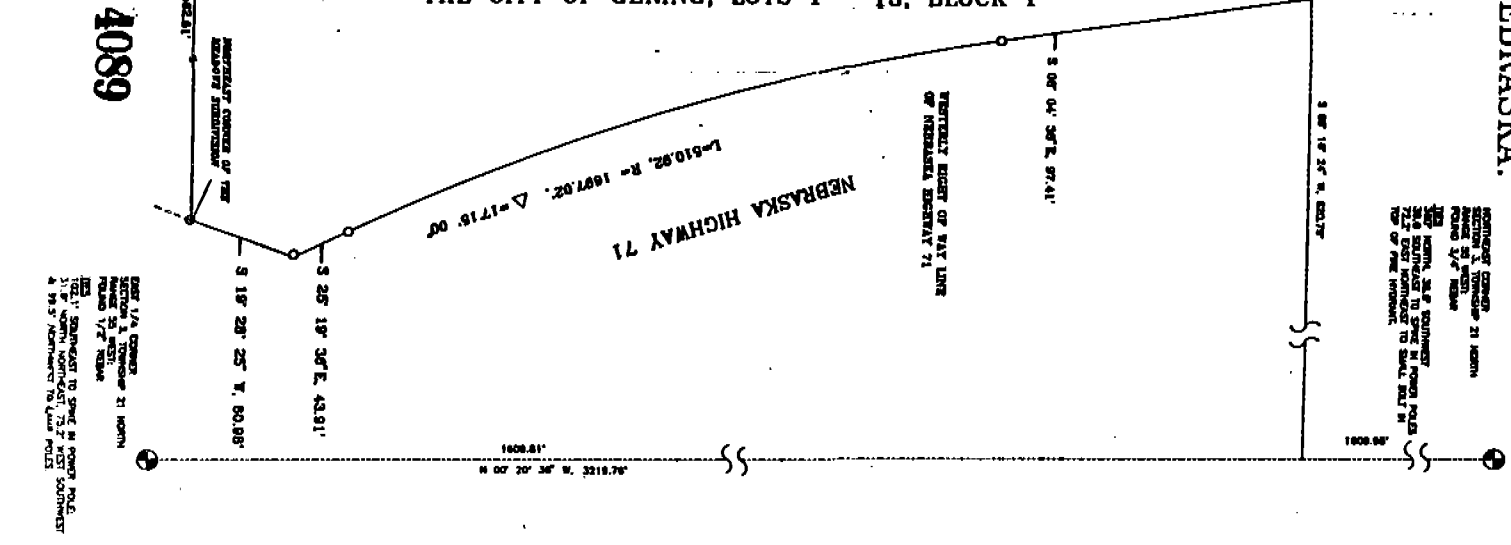
NUM. 13
GEN. 24
PLOT _____
COMPARED _____



- NOTES:
1. BEARINGS-BASED ON NORTH LINE OF THE MEADOWS
SUBDIVISION AND WHICH IS ONE EAST.
2. A - SET 5/8" IRON PIN
3. O - FOUND 5/8" IRON PIN



MONUMENT VIEW ADDITION TO
THE CITY OF GERING, LOTS 1 - 13, BLOCK 1



REGISTERED CORNER - 21 NORTH
SECTION 3, TOWNSHIP 21 NORTH,
RANGE 55 WEST
TO BE SET BY THE REGISTER OF DEEDS
TO BE SET BY THE REGISTER OF DEEDS
TO BE SET BY THE REGISTER OF DEEDS

SEE 1/4 CORNER
SECTION 3, TOWNSHIP 21 NORTH,
RANGE 55 WEST
FOR LOCATION OF THIS
CORNER
SEE 1/4 CORNER
SECTION 3, TOWNSHIP 21 NORTH,
RANGE 55 WEST
FOR LOCATION OF THIS
CORNER

SEMINAR CONTRACT
I, Paul G. Lee, of the Nebraska Quarter of Section 3, Township 21 North, Range 55
West of the 6th Principal Meridian, Scotts Bluff County, Nebraska, do hereby
contract with the City of Gering, Nebraska, for the construction of a monument
view addition to the City of Gering, Nebraska, consisting of 14 lots, Block 2,
located in the Northeast Quarter of Section 3, Township 21 North, Range 55
West of the 6th Principal Meridian, Scotts Bluff County, Nebraska.
The monument view addition to be constructed shall consist of 14 lots, Block 2,
located in the Northeast Quarter of Section 3, Township 21 North, Range 55
West of the 6th Principal Meridian, Scotts Bluff County, Nebraska.
The monument view addition to be constructed shall consist of 14 lots, Block 2,
located in the Northeast Quarter of Section 3, Township 21 North, Range 55
West of the 6th Principal Meridian, Scotts Bluff County, Nebraska.
WITNESSES AT HAND AND SOIL, this 28th day of MAY, 1928.
Paul G. Lee
David M. Maule
City of Gering, Nebraska
Notary Public
State of Nebraska



CITY OF GERING
I, Paul G. Lee, of the Nebraska Quarter of Section 3, Township 21 North, Range 55
West of the 6th Principal Meridian, Scotts Bluff County, Nebraska, do hereby
contract with the City of Gering, Nebraska, for the construction of a monument
view addition to the City of Gering, Nebraska, consisting of 14 lots, Block 2,
located in the Northeast Quarter of Section 3, Township 21 North, Range 55
West of the 6th Principal Meridian, Scotts Bluff County, Nebraska.
The monument view addition to be constructed shall consist of 14 lots, Block 2,
located in the Northeast Quarter of Section 3, Township 21 North, Range 55
West of the 6th Principal Meridian, Scotts Bluff County, Nebraska.
The monument view addition to be constructed shall consist of 14 lots, Block 2,
located in the Northeast Quarter of Section 3, Township 21 North, Range 55
West of the 6th Principal Meridian, Scotts Bluff County, Nebraska.
WITNESSES AT HAND AND SOIL, this 28th day of MAY, 1928.
Paul G. Lee
David M. Maule
City of Gering, Nebraska
Notary Public
State of Nebraska

APPROVAL AND ACCEPTANCE
The foregoing plat of Lots 1 through 14, Block 2, Monument View Addition to the City of
Gering, Nebraska, is hereby approved and accepted by the City of Gering, Nebraska,
this 28th day of May, 1928.
By _____
Mayor
By _____
City Clerk

CITY OF GERING
I, Paul G. Lee, of the Nebraska Quarter of Section 3, Township 21 North, Range 55
West of the 6th Principal Meridian, Scotts Bluff County, Nebraska, do hereby
contract with the City of Gering, Nebraska, for the construction of a monument
view addition to the City of Gering, Nebraska, consisting of 14 lots, Block 2,
located in the Northeast Quarter of Section 3, Township 21 North, Range 55
West of the 6th Principal Meridian, Scotts Bluff County, Nebraska.
The monument view addition to be constructed shall consist of 14 lots, Block 2,
located in the Northeast Quarter of Section 3, Township 21 North, Range 55
West of the 6th Principal Meridian, Scotts Bluff County, Nebraska.
The monument view addition to be constructed shall consist of 14 lots, Block 2,
located in the Northeast Quarter of Section 3, Township 21 North, Range 55
West of the 6th Principal Meridian, Scotts Bluff County, Nebraska.
WITNESSES AT HAND AND SOIL, this 28th day of MAY, 1928.
Paul G. Lee
David M. Maule
City of Gering, Nebraska
Notary Public
State of Nebraska