

Entered in Numerical Index and Filed for Record in the Register of Deeds Office of said County of Scotts Bluff, State of Nebraska, this 17 day of March A. D. 1998, at 9:15 o'clock A. M., Recorded in Book 215 of Deeds, Page 397, thereof. Fee \$ 24.50

Register of Deeds

Mary Jo Bell

LOTS 1 THROUGH 10, BLOCK 11 LOTS 1 THROUGH 6, BLOCK 2, and LOTS 1 THROUGH 12, BLOCK 3 MONUMENT SHADOWS ESTATES

1714

An Addition to the City of Gering, Scotts Bluff County, Nebraska.

MIN. B
GEN. B
PICT. B
COMPARED

SURVEYOR'S CERTIFICATE

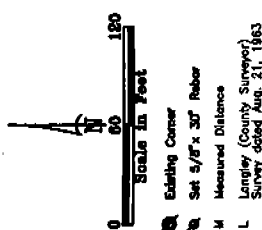
I, Kelly A. Beatty, a Nebraska Registered Land Surveyor, hereby certify that I have surveyed and prepared a plat of Lots 1 through 10, Block 11, Lots 1 through 6, Block 2, and Lots 1 through 12, Block 3, Monument Shadows Estates, an Addition to the City of Gering, Scotts Bluff County, Nebraska, situated in the Northeast Quarter of Section 34, Township 22 North, Range 10 West of the 6th P.M., Scotts Bluff County, Nebraska, more particularly described as follows:

Beginning at the Southwest Corner of the Northeast Quarter of Section 34, a corner monument on the West line of the North Quarter of Section 34, a distance of 518.53 feet, thence bearing S 82°30'33"E, a distance of 235.00 feet, thence bearing N 01°29'27"E, a distance of 212.89 feet, thence bearing S 89°10'32"E, a distance of 602.82 feet, thence bearing S 89°10'32"E, a distance of 602.82 feet, thence bearing N 89°10'32"W, an odd Right of Way line of Country Club Road, as located by the North Quarter of Section 34, T22N-R10W, to the Point of Beginning, containing an area of 11.22 acres, more or less.

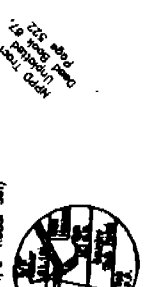
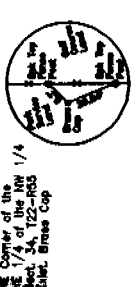
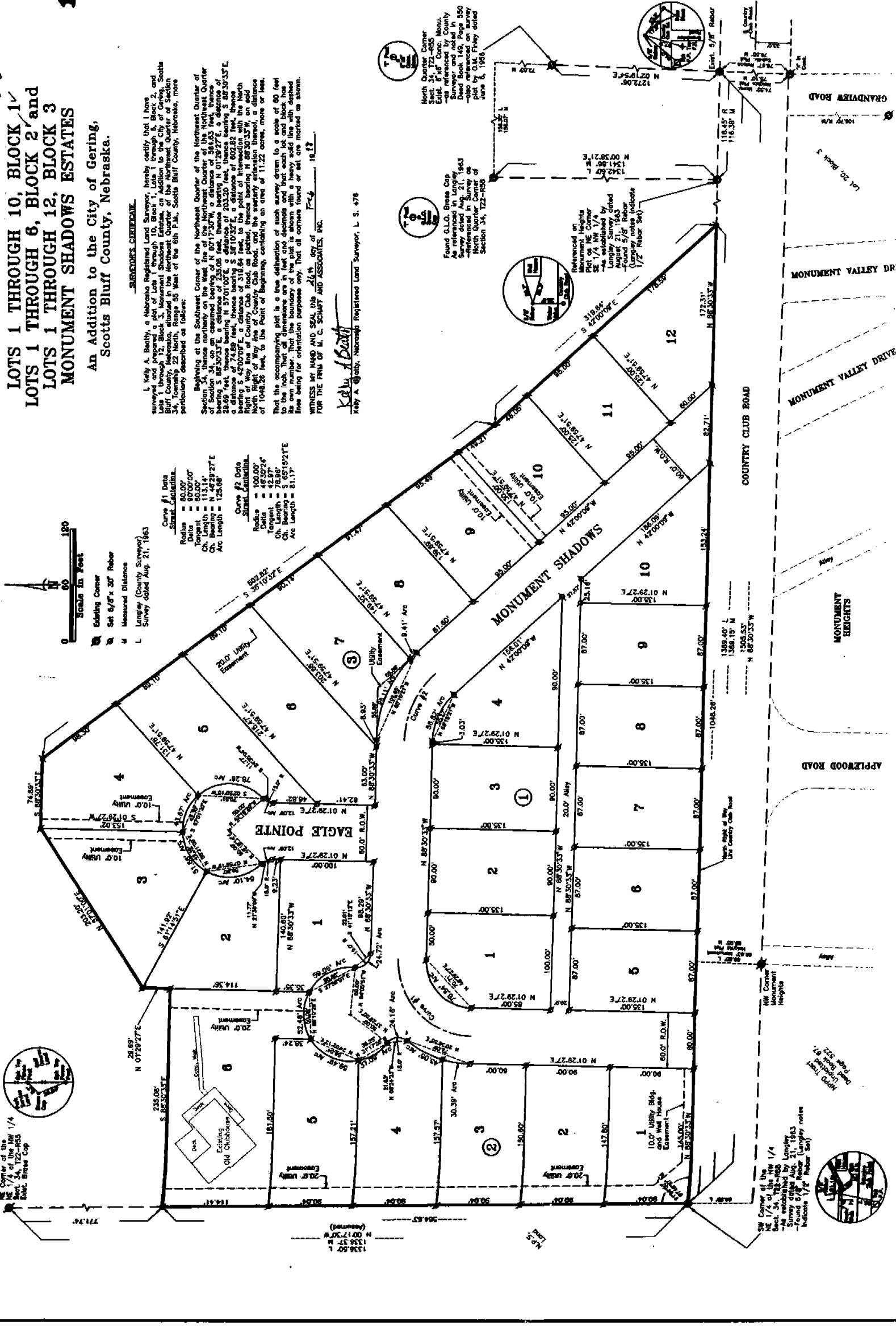
That the accompanying plat is a true definition of such survey drawn to a scale of 60 feet to the inch. That all dimensions are in feet and decimals and that each lot and block has its own number. That the boundary of the plat is shown with a heavy solid line with dashed lines being for orientation purposes only. That all corners found or set are marked as shown.

WITNESS MY HAND AND SEAL this 26th day of March, 1998, at Gering, Nebraska.
FOR THE FIRM OF H. C. SCHAFF AND ASSOCIATES, INC.

Kelly A. Beatty
Kelly A. Beatty, Nebraska Registered Land Surveyor, L. S. 478



- Curve #1 Data
 - Radius = 80.00'
 - Delta = 80°00'00"
 - Tangent = 60.00'
 - Ch. Length = 113.14'
 - Arc Length = 123.68'
- Curve #2 Data
 - Radius = 100.00'
 - Delta = 42°37'24"
 - Tangent = 42.97'
 - Ch. Length = 68.81'
 - Arc Length = 81.17'



NE Corner of the NW 1/4 of the NW 1/4 of Section 34, T22-N, R10-W - as established by County Surveyor and noted in 580 plat referenced on survey plat by O.M. Friley dated June 8, 1986

SW Corner of the NW 1/4 of the NW 1/4 of Section 34, T22-N, R10-W - as established by Langley Survey dated August 21, 1963 - Found 5/18/98 (Langley notes indicate 1/2" Rebar Set)

Found G.L.O. Brass Cap As referenced in Langley Survey dated August 21, 1963 - Found 5/18/98 (Langley notes indicate 1/2" Rebar Set)

Referenced on Monument Heights Monument Heights SE 1/4 NW 1/4 of the NW 1/4 of the NW 1/4 of Section 34, T22-N, R10-W - as established by Langley Survey dated August 21, 1963 - Found 5/18/98 (Langley notes indicate 1/2" Rebar Set)

1714

LOTS 1 THROUGH 10, BLOCK 1,
LOTS 1 THROUGH 6, BLOCK 2,
LOTS 1 THROUGH 12, BLOCK 3,
MONUMENT SHADOWS ESTATES
GERING, NEBRASKA
SHEET 2 OF 2

OWNER'S STATEMENT

We, the undersigned, being the owners of a tract of land situated in the Northeast Quarter of the Northwest Quarter of Section 34, Township 22 North, Range 55 West of the 6th P.M. Scotts Bluff County, Nebraska, as described in the foregoing "Surveyor's Certificate" and shown on the accompanying plat have caused such real estate to be platted as LOTS 1 THROUGH 10, BLOCK 1, LOTS 1 THROUGH, 6, BLOCK 2, and LOTS 1 THROUGH 12, BLOCK 3, MONUMENT SHADOWS ESTATES, an Addition to the City of Gering, Scotts Bluff County, Nebraska.

That the foregoing plat is made with the free consent and in accordance with the desires of the undersigned owners. We hereby dedicate the Street Right of Ways, Alley and Utility Easements shown on the plat to the use and benefit of the public.

Dated this 2nd day of March, 19 98.

City of Gering, Nebraska
Equitable Owner



By: Douglas C. Leafgreen
Douglas C. Leafgreen, Mayor

ACKNOWLEDGEMENT

STATE OF NEBRASKA)
COUNTY OF SCOTTS BLUFF)

Before me, a Notary Public, qualified and acting in said County, personally came Douglas C. Leafgreen, Mayor, City of Gering, Nebraska, a Nebraska Corporation, to me known to be the identical person whose signature is affixed to the foregoing "Owner's Statement" and acknowledged the execution thereof to be his voluntary act and deed and the voluntary act and deed of the City of Gering, Nebraska, a Nebraska Corporation.

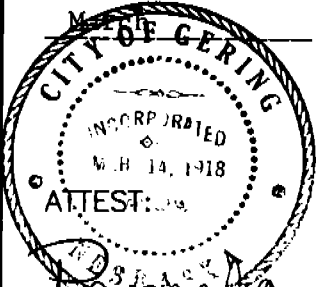
WITNESS MY HAND AND NOTARIAL SEAL this 2nd day of March 19 98.

Rosemarie D. Russell
Notary Public

My Commision Expires: 

APPROVAL AND ACCEPTANCE

The foregoing plat of LOTS 1 THROUGH 10, BLOCK 1, LOTS 1 THROUGH 6, BLOCK 2, and LOTS 1 THROUGH 12, BLOCK 3, MONUMENT SHADOWS ESTATES, an Addition to the City of Gering, Scotts Bluff County, Nebraska, is hereby approved by the Mayor and City Council of the City of Gering, Nebraska, by resolution duly passed this 2nd day of March, 19 98.



Rosemarie K. Richter
City Clerk

Douglas C. Leafgreen
Mayor