



2017-2951

NUM PAGES 3
 DOC TAX _____ PD CHG _____ RET _____
 FEES 22.00 PD CHG RET _____
 TOTAL 22.00
 REC'D McShaff - Dennis
 RET For office use

RECORDED
 SCOTTS BLUFF COUNTY, NE

Date 6-5-17 Time 1:12 pm

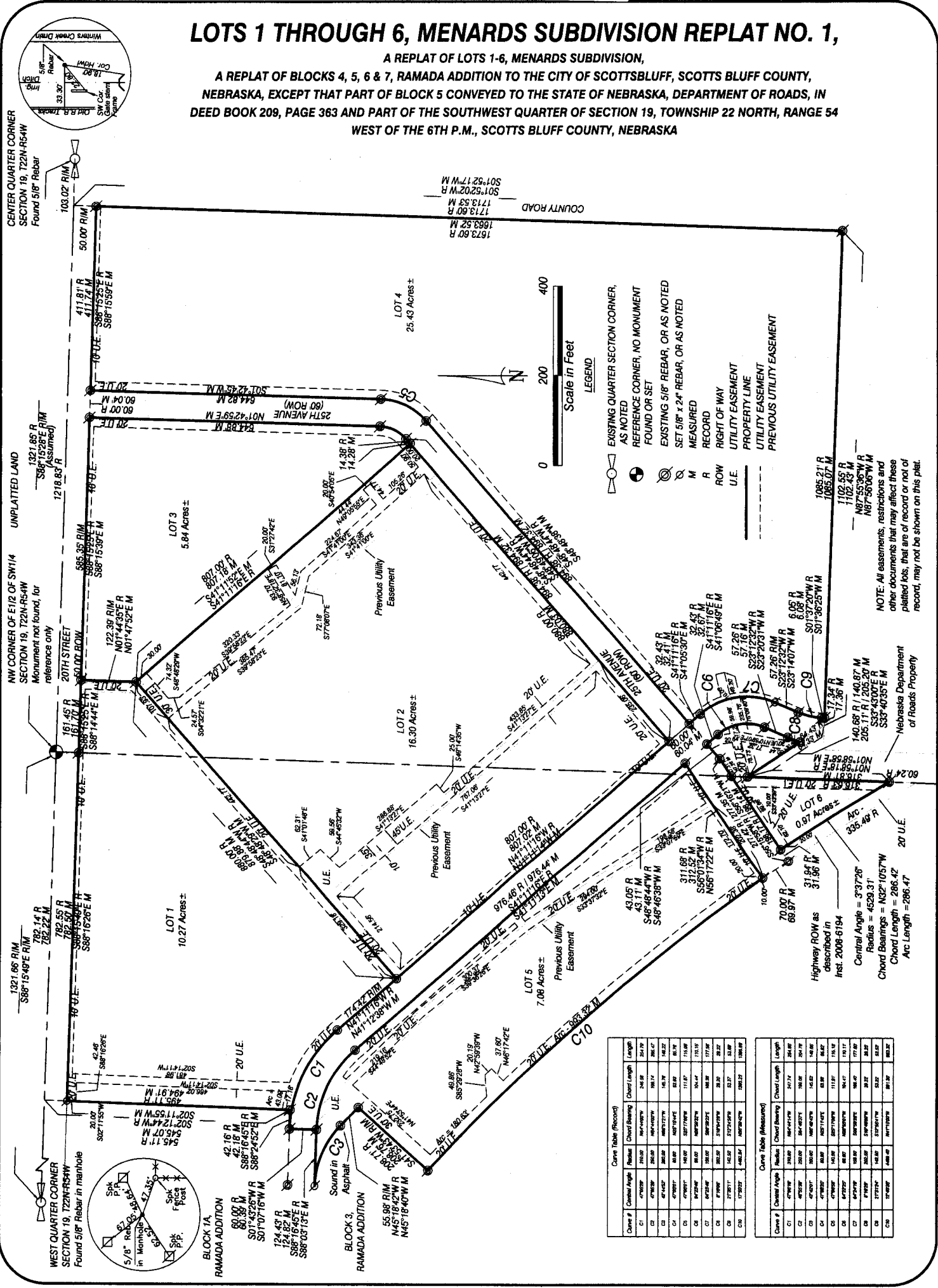
INST. 2017 2951
Jean A. Bauer

REGISTER OF DEEDS

LOTS 1 THROUGH 9, MENARDS SUBDIVISION REPLAT NO. 1,

A REPLAT OF LOTS 1-9, MENARDS SUBDIVISION,

A REPLAT OF BLOCKS 4, 5, 6 & 7, RAMADA ADDITION TO THE CITY OF SCOTTSBLUFF, SCOTTS BLUFF COUNTY, NEBRASKA, EXCEPT THAT PART OF BLOCK 5 CONVEYED TO THE STATE OF NEBRASKA, DEPARTMENT OF ROADS, IN DEED BOOK 209, PAGE 363 AND PART OF THE SOUTHWEST QUARTER OF SECTION 19, TOWNSHIP 22 NORTH, RANGE 54 WEST OF THE 6TH P.M., SCOTTS BLUFF COUNTY, NEBRASKA



Curve Table (Record)			
Curve #	Central Angle	Radius	Chord Length
C1	47.00°	200.00	268.88
C2	47.00°	200.00	268.88
C3	47.00°	200.00	268.88
C4	47.00°	200.00	268.88
C5	47.00°	200.00	268.88
C6	47.00°	200.00	268.88
C7	47.00°	200.00	268.88
C8	47.00°	200.00	268.88
C9	47.00°	200.00	268.88
C10	47.00°	200.00	268.88

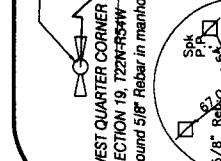
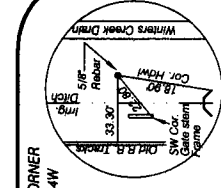
Curve Table (Measured)			
Curve #	Central Angle	Radius	Chord Length
C1	47.00°	200.00	268.88
C2	47.00°	200.00	268.88
C3	47.00°	200.00	268.88
C4	47.00°	200.00	268.88
C5	47.00°	200.00	268.88
C6	47.00°	200.00	268.88
C7	47.00°	200.00	268.88
C8	47.00°	200.00	268.88
C9	47.00°	200.00	268.88
C10	47.00°	200.00	268.88

CENTER QUARTER CORNER SECTION 19, T22N-R54W Found 5/8" Rebar

UNPLATTED LAND SECTION 19, T22N-R54W Monument not found, for reference only

NW CORNER OF E1/2 OF SW1/4 SECTION 19, T22N-R54W Monument not found, for reference only

WEST QUARTER CORNER SECTION 19, T22N-R54W Found 5/8" Rebar in manhole



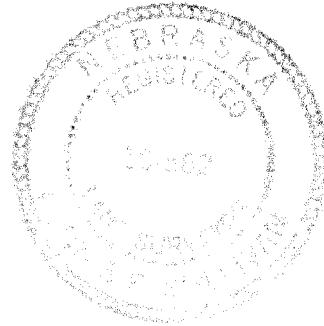
LOTS 1-6, MENARDS SUBDIVISION REPLAT NO. 1
 REPLAT OF LOTS 1-6, MENARDS SUBDIVISION
 SCOTTSBLUFF, NEBRASKA
 SHEET 2 OF 3

SURVEYOR'S CERTIFICATE

I, Dennis P. Sullivan, a Nebraska Registered Land Surveyor, hereby certify that I, or under my direct supervision, have surveyed and prepared a plat of LOTS 1 THROUGH 6, MENARDS SUBDIVISION REPLAT NO. 1, a Replat of Lots 1-6, Menards Subdivision, a Replat of Blocks 4, 5, 6 & 7, Ramada Addition to the City of Scottsbluff, Scotts Bluff County, Nebraska, except that part of Block 5 conveyed to the State of Nebraska Department of Roads in Deed Book 209, Page 363 and part of the Southwest Quarter of Section 19, Township 22 North, Range 54 West of the 6th P.M., Scotts Bluff County, Nebraska.

That the accompanying plat is a true delineation of such survey drawn to a scale of 200 feet to the inch. That all dimensions are in feet and decimals. That each lot and block has its own number and that the boundary of the plat is shown with a heavy solid line with dashed lines being for orientation purposes only. That all corners found or set are marked as shown.

WITNESS MY HAND AND SEAL THIS 15th DAY OF May, 2017.
 FOR THE FIRM OF M. C. SCHAFF AND ASSOCIATES, INC.



Dennis P. Sullivan
 Dennis P. Sullivan, Nebraska Registered Land Surveyor, L. S. 562

OWNER'S STATEMENT

We, the undersigned, being the owners of Lots 1-6, Menards Subdivision, a Replat of Blocks 4, 5, 6 & 7, Ramada Addition to the City of Scottsbluff, Scotts Bluff County, Nebraska, except that part of Block 5 conveyed to the State of Nebraska Department of Roads in Deed Book 209, Page 363 and part of the Southwest Quarter of Section 19, Township 22 North, Range 54 West of the 6th P.M., Scotts Bluff County, Nebraska as described in the foregoing 'Surveyor's Certificate' and shown on the accompanying plat have caused such real estate to be platted as LOTS 1 THROUGH 6, MENARDS SUBDIVISION REPLAT NO. 1, a Replat of Lots 1-6, Menards Subdivision, a Replat of Blocks 4, 5, 6 & 7, Ramada Addition to the City of Scottsbluff, Scotts Bluff County, Nebraska, except that part of Block 5 conveyed to the State of Nebraska Department of Roads in Deed Book 209, Page 363 and part of the Southwest Quarter of Section 19, Township 22 North, Range 54 West of the 6th P.M., Scotts Bluff County, Nebraska.

That the foregoing plat is made with the free consent and in accordance with the desires of the undersigned owners.
 Dated this 22 day of May, 2017.

Owner:
 Menard, Inc.

Theron J. Berg
 By: Theron J. Berg, Real Estate Manager
 Menard, Inc.

LOTS 1-6, MENARDS SUBDIVISION REPLAT NO. 1
REPLAT OF LOTS 1-6, MENARDS SUBDIVISION
SCOTTSBLUFF, NEBRASKA
SHEET 3 OF 3

ACKNOWLEDGEMENT

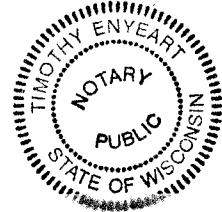
STATE OF WISCONSIN)
COUNTY OF EAU CLAIRE)

Before me, a Notary Public, qualified and acting in said County, personally came Theron J. Berg, Real Estate Manager, Menard, Inc., to me known to be the identical person whose signature is affixed to the foregoing 'Owner's Statement' and acknowledged the execution thereof to be his voluntary act and deed, and the voluntary act and deed of Menard, Inc.

WITNESS MY HAND AND SEAL THIS 22 DAY OF May, 2017.



Notary Public

My Commission Expires is permanent



APPROVAL AND ACCEPTANCE

The foregoing plat of LOTS 1 THROUGH 6, MENARDS SUBDIVISION REPLAT NO. 1, a Replat of Lots 1-6, Menards Subdivision, a Replat of Blocks 4, 5, 6 & 7, Ramada Addition to the City of Scottsbluff, Scotts Bluff County, Nebraska, except that part of Block 5 conveyed to the State of Nebraska Department of Roads in Deed Book 209, Page 363 and part of the Southwest Quarter of Section 19, Township 22 North, Range 54 West of the 6th P.M., Scotts Bluff County, Nebraska is hereby approved by the Mayor and City Council of the City of Scottsbluff, Scotts Bluff County, Nebraska, by resolution duly passed this 30th day of May, 2017.


Randy Meininger, Mayor

ATTEST:


City Clerk