



2016-4596

COMPUTER C CP  
PICTURED C  
IMAGED \_\_\_\_\_

RECORDED  
SCOTTS BLUFF COUNTY, NE

Date 8-19-16 Time 9:48 am

INST. 2016 4596

*Jean A. Bauer*

REGISTER OF DEEDS

NUM PAGES 2  
DOC TAX \_\_\_\_\_ PD \_\_\_\_\_ CHG \_\_\_\_\_ RET \_\_\_\_\_  
FEES 16.00 PD \_\_\_\_\_ CHG  RET \_\_\_\_\_  
TOTAL 16.00  
REC'D City of Gering  
RET For office use

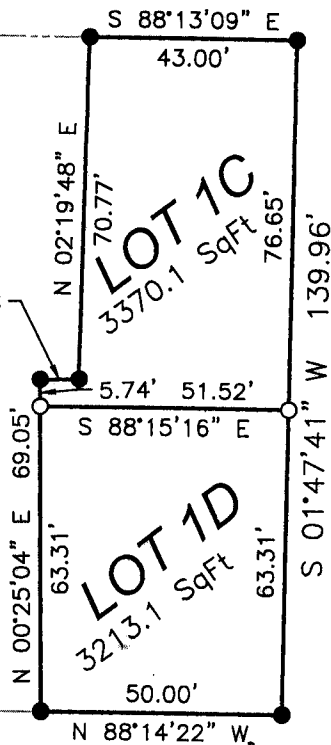
# FINAL PLAT

LOTS 1C AND 1D, BLOCK 12, A REPLAT OF LOT 1B, BLOCK 12, ORIGINAL TOWN, A REPLAT OF LOTS 1A AND 2A, BLOCK 12, ORIGINAL TOWN, A REPLAT OF LOTS 1, 2, AND 3, BLOCK 12, ORIGINAL TOWN TO THE CITY OF GERING, SCOTTS BLUFF COUNTY, NEBRASKA.

Q-"M" STREET

50'

50'



40'

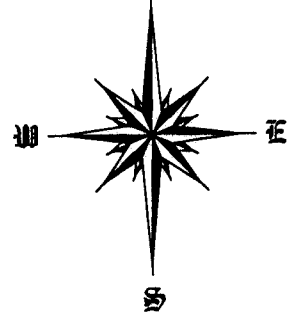
40'

Q-11TH STREET

20'

ALLEY

20'



SCALE 1"=40'

### LEGEND

- - CORNER RECOVERED
- - CORNER ESTABLISHED
- 5/8"x30" REBAR WITH PVC CAP

SHEET  
1 OF 2

PROJECT:  
LOTS 1C & 1D, BLOCK 12 O.T.  
CITY OF GERING  
GERING, NEBRASKA

## ACCUSTAR SURVEYING

30601 COUNTY ROAD 17  
PHONE: (308) 623-0197

MITCHELL, NE 69357  
CELL: (308) 631-0737

Scale 1"=40'  
Date: JULY 18, 2016  
Dwn By: SMB  
REVISED:

# FINAL PLAT

LOTS 1C AND 1D, BLOCK 12, A REPLAT OF LOT 1B, BLOCK 12, ORIGINAL TOWN, A REPLAT OF LOTS 1A AND 2A, BLOCK 12, ORIGINAL TOWN, A REPLAT OF LOTS 1, 2, AND 3, BLOCK 12, ORIGINAL TOWN TO THE CITY OF GERING, SCOTTS BLUFF COUNTY, NEBRASKA.

SURVEYOR'S CERTIFICATE:

I, SCOTT M. BOSSE, NEBRASKA REGISTERED LAND SURVEYOR NUMBER 603, DO HEREBY CERTIFY THAT I HAVE SURVEYED AND PREPARED A PLAT OF LOTS 1C AND 1D, BLOCK 12, A REPLAT OF LOT 1B, BLOCK 12, ORIGINAL TOWN, A REPLAT OF LOTS 1A AND 2A, BLOCK 12, ORIGINAL TOWN, A REPLAT OF LOTS 1, 2, AND 3, BLOCK 12, ORIGINAL TOWN TO THE CITY OF GERING, SCOTTS BLUFF COUNTY, NEBRASKA.

THAT THE ACCOMPANYING DRAWING IS A CORRECT DELINEATION OF SAID SURVEY DRAWN TO A SCALE OF 40 FEET TO THE INCH; THAT SAID SURVEY AND DRAWING WAS CONDUCTED BY ME OR UNDER MY DIRECT SUPERVISION; THAT THE DISTANCES ARE GROUND DISTANCES GIVEN IN FEET AND DECIMALS OF A FOOT; AND THE MONUMENTS WERE FOUND OR SET AS INDICATED AND THE BOUNDARY IS DEPICTED BY A THICKENED SOLID LINE.



WITNESS MY HAND AND SEAL this 19<sup>TH</sup> day of AUGUST, 2016.

Scott M. Bosse  
Scott M. Bosse  
NEBRASKA REGISTERED LAND SURVEYOR NUMBER 603

OWNERS STATEMENT

WE, THE UNDERSIGNED, BEING THE OWNERS OF LOTS 1B, BLOCK 12, ORIGINAL TOWN, A REPLAT OF LOTS 1A AND 2A, BLOCK 12, ORIGINAL TOWN, A REPLAT OF LOTS 1, 2, AND 3, BLOCK 12, ORIGINAL TOWN TO THE CITY OF GERING, SCOTTS BLUFF COUNTY, NEBRASKA, AS SHOWN ON THE ACCOMPANYING PLAT HAVE CAUSED SUCH REAL ESTATE TO BE PLATTED AS LOTS 1C AND 1D, BLOCK 12, A REPLAT OF LOT 1B, BLOCK 12, ORIGINAL TOWN, A REPLAT OF LOTS 1A AND 2A, BLOCK 12, ORIGINAL TOWN, A REPLAT OF LOTS 1, 2, AND 3, BLOCK 12, ORIGINAL TOWN TO THE CITY OF GERING, SCOTTS BLUFF COUNTY, NEBRASKA.

DATED THIS 18 DAY OF Aug, 2016.

Leroy W. Schwartzkopf  
LEROY W. SCHWARTZKOPF

Carol E. Schwartzkopf  
CAROL E. SCHWARTZKOPF

ACKNOWLEDGMENT

STATE OF NEBRASKA )  
COUNTY OF SCOTTS BLUFF )

BEFORE ME, A NOTARY PUBLIC, QUALIFIED AND ACTING IN SAID COUNTY, PERSONALLY CAME LEROY W. SCHWARTZKOPF AND CAROL E. SCHWARTZKOPF, HUSBAND AND WIFE, TO ME KNOWN TO BE THE IDENTICAL PERSONS WHOSE SIGNATURES ARE AFFIXED TO THE FOREGOING "OWNER'S STATEMENT" AND ACKNOWLEDGED THE EXECUTION THEREOF TO BE THEIR VOLUNTARY ACT AND DEED.

WITNESS MY NOTORIAL SEAL THIS 18<sup>th</sup> DAY OF AUGUST, 2016.



Brenda Bruntz  
NOTARY PUBLIC

MY COMMISSION EXPIRES: Dec. 19, 2019

APPROVAL AND ACCEPTANCE

THE FOREGOING PLAT OF LOTS 1C AND 1D, BLOCK 12, A REPLAT OF LOT 1B, BLOCK 12, ORIGINAL TOWN, A REPLAT OF LOTS 1A AND 2A, BLOCK 12, ORIGINAL TOWN, A REPLAT OF LOTS 1, 2, AND 3, BLOCK 12, ORIGINAL TOWN TO THE CITY OF GERING, SCOTTS BLUFF COUNTY, NEBRASKA, IS HEREBY APPROVED AND ACCEPTED BY THE MAYOR AND CITY COUNCIL OF THE CITY OF GERING, SCOTTS BLUFF COUNTY, NEBRASKA, BY RESOLUTION DATED THIS 9<sup>th</sup> DAY OF August, 2016.

Richard D. Kuf  
MAYOR

ATTEST: Karen J. Ueff  
CITY CLERK

SHEET 2 OF 2	PROJECT: LOTS 1C & 1D, BLOCK 12 O.T. CITY OF GERING GERING, NEBRASKA	ACCUSTAR SURVEYING 30601 COUNTY ROAD 17 PHONE: (308) 623-0197	MITCHELL, NE 69357 CELL: (308) 631-0737	Scale 1"=40'
				Date: JULY 18, 2016
				Drawn By: SMB
				REVISED: