



2014-5376

RECORDED
SCOTTS BLUFF COUNTY, NE

NUM PAGES 3
 DOC TAX 22.00 PD CHG RET
 FEES 22.00 PD CHG RET
 TOTAL 22.00
 REC'D MC Schaff
 RET for office use

NUM INDEX
 COMPUTER Da
 PICTURED
 IMAGED

Date 11-20-14 Time 1:45 PM
INST. 2014 5376
Jean A. Bauer

REGISTER OF DEEDS

FINAL PLAT

LOT 6, BLOCK 1, OREGON TRAIL PARK ADDITION,

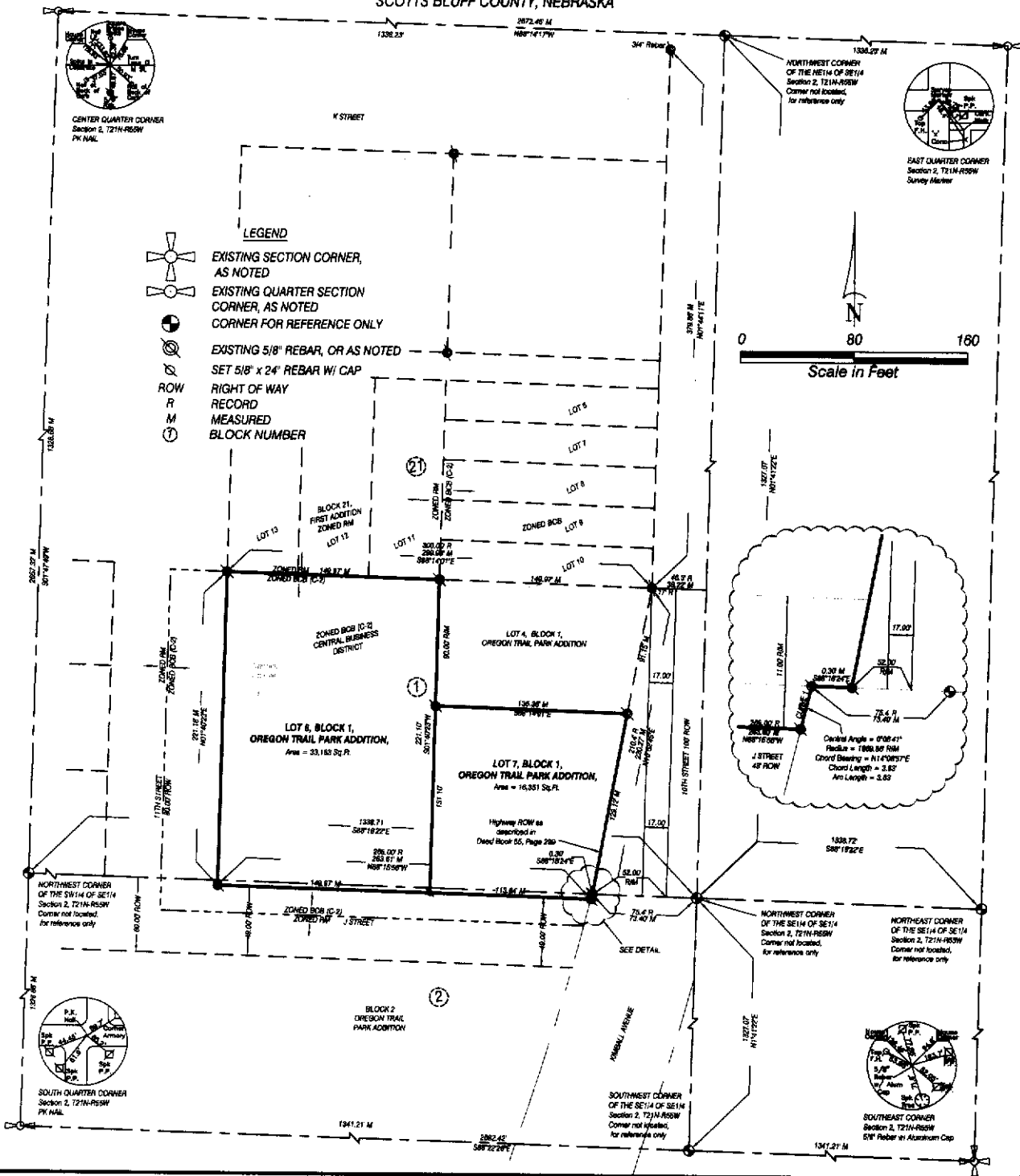
A REPLAT OF LOT 3 BLOCK 1, OREGON TRAIL PARK ADDITION, A REPLAT OF LOT 1, BLOCK 1, OREGON TRAIL PARK ADDITION,
 AND PART OF LOT 5, BLOCK 1, OREGON TRAIL PARK ADDITION, A REPLAT OF LOTS 1 AND 2, BLOCK 1, OREGON TRAIL PARK ADDITION,
 AND REPLAT OF PART OF "J" STREET, BLOCK 1, SUBDIVISION OF BLOCK 2, OREGON TRAIL PARK ADDITION

AND

LOT 7, BLOCK 1, OREGON TRAIL PARK ADDITION,

A REPLAT OF PART OF LOT 5, BLOCK 1, OREGON TRAIL PARK ADDITION,
 A REPLAT OF LOTS 1 AND 2, BLOCK 1, OREGON TRAIL PARK ADDITION,
 AND REPLAT OF PART OF "J" STREET, BLOCK 1, SUBDIVISION OF BLOCK 2, OREGON TRAIL PARK ADDITION

ALL IN THE CITY OF GERING, NEBRASKA,
 SITUATED IN THE WEST HALF OF THE SOUTHEAST QUARTER OF SECTION 2,
 TOWNSHIP 21 NORTH, RANGE 55 WEST OF THE 6TH P.M.,
 SCOTTS BLUFF COUNTY, NEBRASKA



LOTS 6 AND 7, BLOCK 1,
A REPLAT OF LOTS 3 AND 5,
BLOCK 1, OREGON TRAIL
PARK ADDITION,
GERING, NEBRASKA
SHEET 2 OF 3

SURVEYOR'S CERTIFICATE

I, Dennis P. Sullivan, a Nebraska Registered Land Surveyor, hereby certify that I have surveyed and prepared a plat of **LOT 6, BLOCK 1, OREGON TRAIL PARK ADDITION**, a Replat of Lot 3 Block 1, Oregon Trail Park Addition, a Replat of Lot 1, Block 1, Oregon Trail Park Addition, and part of Lot 5, Block 1, Oregon Trail Park Addition, a Replat of Lots 1 and 2, Block 1, Oregon Trail Park Addition, and Replat of part of "J" Street, Block 1, Subdivision of Block 2, Oregon Trail Park Addition AND **LOT 7, BLOCK 1, OREGON TRAIL PARK ADDITION**, a Replat of part of Lot 5, Block 1, Oregon Trail Park Addition, a Replat of Lots 1 and 2, Block 1, Oregon Trail Park Addition, and Replat of part of "J" Street, Block 1, Subdivision of Block 2, Oregon Trail Park Addition all in the City of Gering, Nebraska, situated in the West Half of the Southeast Quarter of Section 2, Township 21 North, Range 55 West of the 6th P.M., Scotts Bluff County, Nebraska

That the accompanying plat is a true delineation of such survey drawn to a scale of 80 feet to the inch. That all dimensions are in feet and decimals. That each lot and block has its own number and that the boundary of the plat is shown with a heavy solid line with dashed lines being for orientation purposes only. That all corners found or set are marked as shown.

WITNESS MY HAND AND SEAL THIS 19th DAY OF November, 2014.
FOR THE FIRM OF M. C. SCHAFF AND ASSOCIATES, INC.


Dennis P. Sullivan, Nebraska Registered Land Surveyor, L. S. 562




OWNER'S STATEMENT

We, the undersigned, being the owners of Lot 3, Block 1, Oregon Trail Park Addition, Replat of Lot 1, Block 1, Oregon Trail Park Addition, AND Lot 5, Block 1, Oregon Trail Park Addition, a Replat of Lots 1 and 2, Block 1, Oregon Trail Park Addition, and Replat of part of "J" Street, Block 1, subdivision of Block 2, Oregon Trail Park Addition all in the City of Gering, Nebraska, situated in the West Half of the Southeast Quarter of Section 2, Township 21 North, Range 55 West of the 6th P.M., Scotts Bluff County, Nebraska as described in the foregoing 'Surveyor's Certificate' and shown on the accompanying plat have caused such real estate to be platted as **LOT 6, BLOCK 1, OREGON TRAIL PARK ADDITION**, a Replat of Lot 3 Block 1, Oregon Trail Park Addition, a Replat of Lot 1, Block 1, Oregon Trail Park Addition, and part of Lot 5, Block 1, Oregon Trail Park Addition, a Replat of Lots 1 and 2, Block 1, Oregon Trail Park Addition, and Replat of part of "J" Street, Block 1, Subdivision of Block 2, Oregon Trail Park Addition AND **LOT 7, BLOCK 1, OREGON TRAIL PARK ADDITION**, a Replat of part of Lot 5, Block 1, Oregon Trail Park Addition, a Replat of Lots 1 and 2, Block 1, Oregon Trail Park Addition, and Replat of part of "J" Street, Block 1, Subdivision of Block 2, Oregon Trail Park Addition all in the City of Gering, Nebraska, situated in the West Half of the Southeast Quarter of Section 2, Township 21 North, Range 55 West of the 6th P.M., Scotts Bluff County, Nebraska

That the foregoing plat is made with the free consent and in accordance with the desires of the undersigned owners.
Dated this 19 day of November, 2014.

Owner:
LOTS 3 AND 5, BLOCK 1, OREGON TRAIL PARK ADDITION
AND PART OF J STREET

GV Investments, LLC, a Nebraska Limited Liability Company


By: Jarod Michaelson, Secretary Treasurer

LOTS 6 AND 7, BLOCK 1,
A REPLAT OF LOTS 3 AND 5,
BLOCK 1, OREGON TRAIL
PARK ADDITION,
GERING, NEBRASKA
SHEET 3 OF 3

ACKNOWLEDGEMENT

STATE OF NEBRASKA)
COUNTY OF SCOTTS BLUFF)

Before me, a Notary Public, qualified and acting in said County, personally came Jarod Michaelson, Secretary Treasurer for GV Investments, LLC, a Nebraska Limited Liability Company, to me known to be the identical person whose signature is affixed to the foregoing 'Owner's Statement' and acknowledged the execution thereof to be his voluntary act and deed, and the voluntary act and deed of GV Investments, LLC, a Nebraska Limited Liability Company.

WITNESS MY HAND AND SEAL THIS 19th DAY OF November, 2014.

Dennis P. Sullivan
Notary Public

My Commission Expires Aug. 26, 2018



APPROVAL AND ACCEPTANCE

The foregoing plat of **LOT 6, BLOCK 1, OREGON TRAIL PARK ADDITION**, a Replat of Lot 3 Block 1, Oregon Trail Park Addition, a Replat of Lot 1, Block 1, Oregon Trail Park Addition, and part of Lot 5, Block 1, Oregon Trail Park Addition, a Replat of Lots 1 and 2, Block 1, Oregon Trail Park Addition, and Replat of part of "J" Street, Block 1, Subdivision of Block 2, Oregon Trail Park Addition AND **LOT 7, BLOCK 1, OREGON TRAIL PARK ADDITION**, a Replat of part of Lot 5, Block 1, Oregon Trail Park Addition, a Replat of Lots 1 and 2, Block 1, Oregon Trail Park Addition, and Replat of part of "J" Street, Block 1, Subdivision of Block 2, Oregon Trail Park Addition all in the City of Gering, Nebraska, situated in the West Half of the Southeast Quarter of Section 2, Township 21 North, Range 55 West of the 6th P.M., Scotts Bluff County, Nebraska was approved by the City Administrator and City Engineer of the City of Gering, Nebraska pursuant to Section 19-916, reissue of revised statutes of Nebraska, as amended by Section 10 of LB 71, approved March 5, 1983, and amendment to article 21, Section 21.307 by ordinance No. 1517 to the City of Gering, Nebraska.

Lane Danielzuk
Lane Danielzuk, City Administrator

Edwin Mayo
Edwin Mayo, Mayor