

2014-4983

NUM INDEX
COMPUTER
PICTURED
IMAGED

RECORDED
SCOTTS BLUFF COUNTY, NE

Date 10-24-14 Time 3:30pm

INST. 2014 4983

Jean A. Bauer

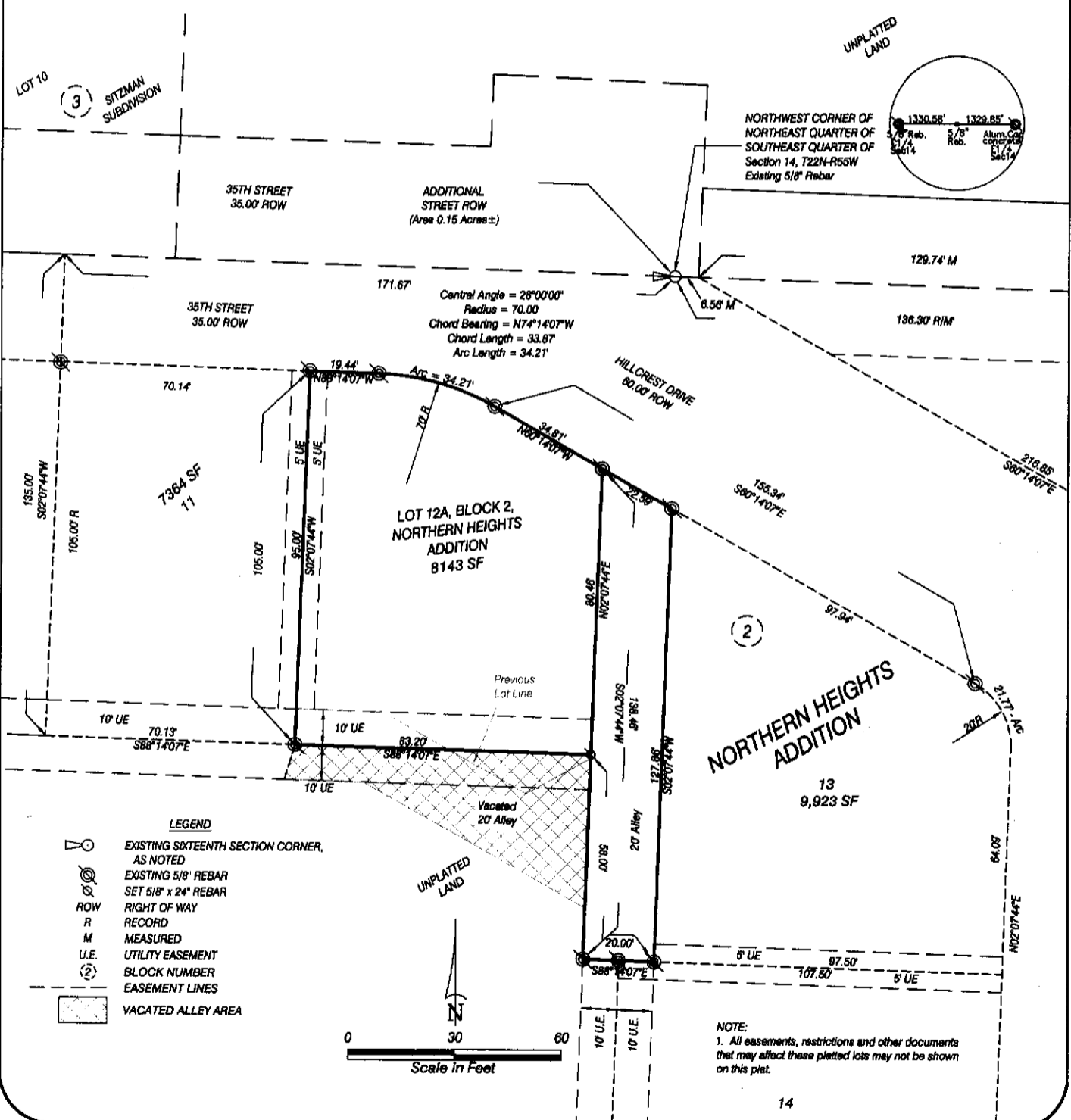
REGISTER OF DEEDS

NUM PAGES 3
DOC TAX PD CHG RET
FEES 22.00 PD CHG RET
TOTAL 22.00
REC'D M.C. Schaff
RET for office use

FINAL PLAT LOT 12A, BLOCK 2; NORTHERN HEIGHTS ADDITION

A REPLAT OF VACATED LOT 12, BLOCK 2, NORTHERN HEIGHTS ADDITION, AND PART OF VACATED 20' ALLEY, AN ADDITION TO THE CITY OF SCOTTSBLUFF, SCOTTS BLUFF COUNTY, NEBRASKA

SITUATED IN THE SOUTHEAST QUARTER OF SECTION 14,
TOWNSHIP 22 NORTH, RANGE 55 WEST OF THE 6TH P.M.,
SCOTTS BLUFF COUNTY, NEBRASKA



7A
Dural

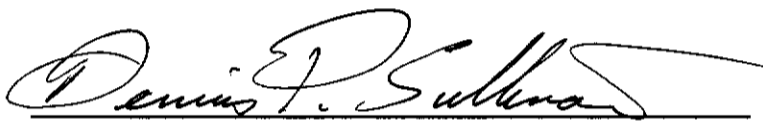
LOT 12A, BLOCK 2,
NORTHERN HEIGHTS ADDITION
SCOTTSBLUFF, NEBRASKA
SHEET 2 OF 3

SURVEYOR'S CERTIFICATE

I, Dennis P. Sullivan, a Nebraska Registered Land Surveyor, hereby certify that I have surveyed and prepared a plat of LOT 12A, BLOCK 2, NORTHERN HEIGHTS ADDITION, A REPLAT OF VACATED LOT 12, BLOCK 2, NORTHERN HEIGHTS ADDITION, AND PART OF VACATED 20' ALLEY, an Addition to the City of Scottsbluff, Scotts Bluff County, Nebraska situated in the Southeast Quarter of Section 14, Township 22 North, Range 55 West of the 6th P.M., Scotts Bluff County, Nebraska

That the accompanying plat is a true delineation of such survey drawn to a scale of 100 feet to the inch. That all dimensions are in feet and decimals. That each lot and block has its own number and that the boundary of the plat is shown with a heavy solid line. That all corners found or set are marked as shown.

WITNESS MY HAND AND SEAL THIS 8th DAY OF October, 2014.
FOR THE FIRM OF M. C. SCHAFF AND ASSOCIATES, INC.



Dennis P. Sullivan, Nebraska Registered Land Surveyor, L. S. 562



OWNER'S STATEMENT

We, the undersigned, being the owners of Lot 12 and part of a 20' alley in the City of Scottsbluff, Scotts Bluff County, Nebraska, as described in the foregoing 'Surveyor's Certificate' and shown on the accompanying plat have caused such real estate to be platted as LOT 12A, BLOCK 2, NORTHERN HEIGHTS ADDITION, A REPLAT OF VACATED LOT 12, BLOCK 2, NORTHERN HEIGHTS ADDITION, AND PART OF VACATED 20' ALLEY, an Addition to the City of Scottsbluff, Scotts Bluff County, Nebraska situated in the Southeast Quarter of Section 14, Township 22 North, Range 55 West of the 6th P.M., Scotts Bluff County, Nebraska

That the foregoing plat is made with the free consent and in accordance with the desires of the undersigned owners. We hereby dedicate the alleys and easements as shown on the plat for the use and benefit of the public.

Dated this 8th day of October, 2014.

Owner of Lot 12 and part of 20' alley,
Torrington Town Homes, LLC
a Wyoming Limited Liability Corporation



By: Steven C. Herron, Member / Manager

LOT 12A, BLOCK 2,
NORTHERN HEIGHTS ADDITION
SCOTTSBLUFF, NEBRASKA
SHEET 3 OF 3

ACKNOWLEDGEMENT

STATE OF NEBRASKA)
COUNTY OF SCOTTS BLUFF)

Before me, a Notary Public, qualified and acting in said County, personally came Steven C. Herron, Member / Manager of Torrington Town Homes, LLC a Wyoming Limited Liability Corporation, to me known to be the identical person whose signature is affixed to the foregoing 'Owner's Statement' and acknowledged the execution thereof to be his voluntary act and deed, and the act and deed of Torrington Town Homes, LLC a Wyoming Limited Liability Corporation,

WITNESS MY HAND AND SEAL THIS 8th DAY OF October, 2014.

David P. Sullivan
Notary Public

My Commission Expires August 26, 2018



APPROVAL AND ACCEPTANCE

The foregoing plat of LOT 12A, BLOCK 2, NORTHERN HEIGHTS ADDITION, A REPLAT OF VACATED LOT 12, BLOCK 2, NORTHERN HEIGHTS ADDITION, AND PART OF VACATED 20' ALLEY, an Addition to the City of Scottsbluff, Scotts Bluff County, Nebraska situated in the Southeast Quarter of Section 14, Township 22 North, Range 55 West of the 6th P.M., Scotts Bluff County, Nebraska

is hereby approved and accepted by the Mayor and City Council of the City of Scottsbluff, Scotts Bluff County, Nebraska, by resolution dated this 20th day of October, 2014.

[Signature]
Mayor

Attest: *[Signature]*
City Clerk