



2012-5217

NUM INDEX
COMPUTER A-C
PICTURED C
IMAGED

NUM PAGES 3
DOC TAX PD CHG RET
FEES 22.00 PD CHG RET
TOTAL 22.00
REC'D M.C. Schaff
RET

RECORDED
SCOTTS BLUFF COUNTY, NE

Date 9-21-12 Time 2:31pm
Inst. 2012 5217
Jean A. Bauer

REGISTER OF DEEDS

FINAL PLAT

LOTS 1A, 100A, 100B, 135A, 135B, 136A, 178A, 178B, PART OF 179, 179A, 179B, PART OF 224 AND 224A, OF SECTION A,

REPLAT of THIRD ADDITION TO FAIRVIEW CEMETERY

A REPLAT OF VACATED LOTS 95-99, AND LAND IN SECTION A, THIRD ADDITION TO FAIRVIEW CEMETERY

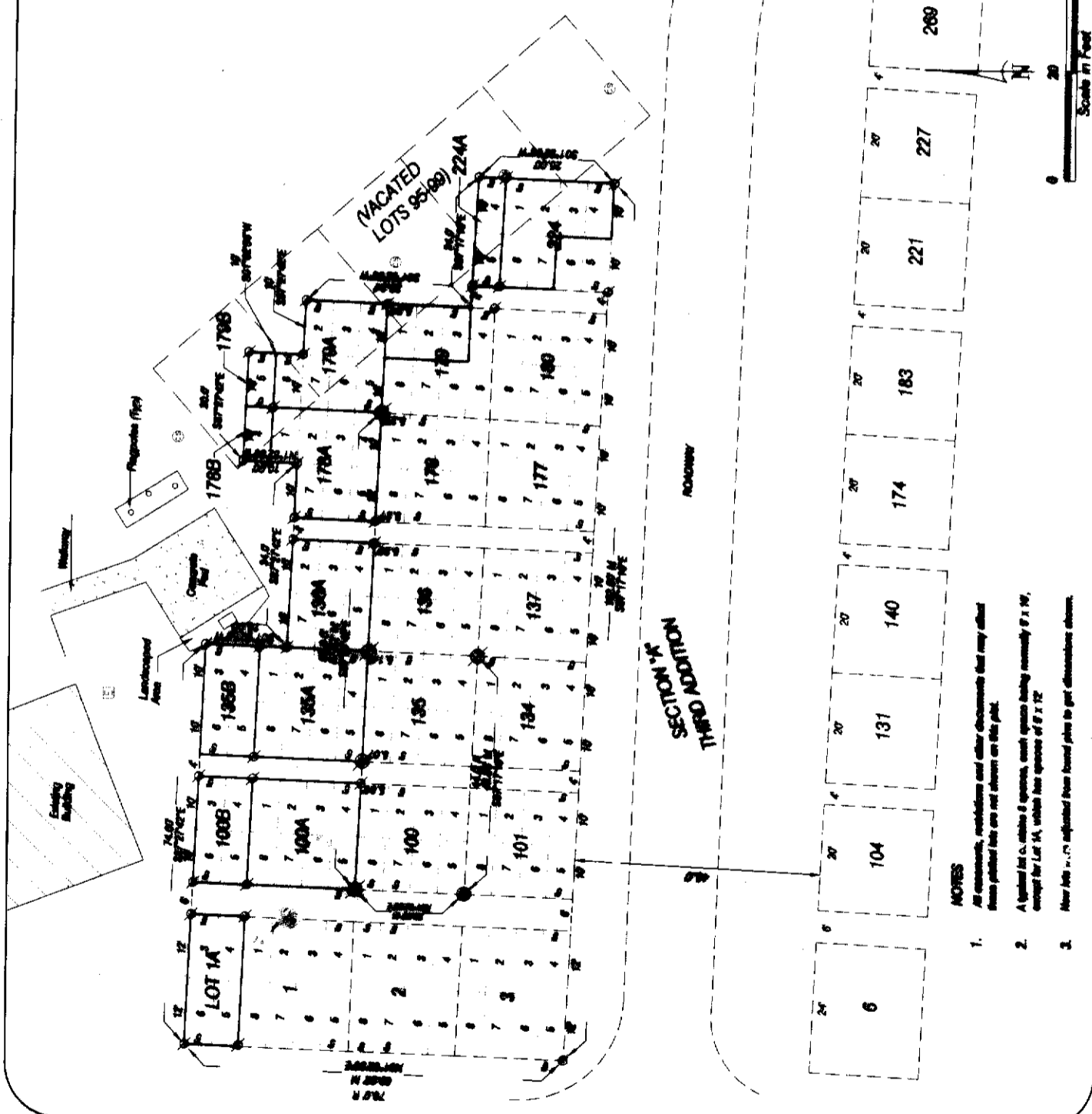
AN ADDITION TO THE CITY OF SCOTTSBLUFF, SCOTTS BLUFF COUNTY, NEBRASKA

SITUATED IN THE NORTHERLY QUARTER OF SECTION 18, TOWNSHIP 28 NORTH, RANGE 68 WEST OF THE 6TH P.M., SCOTTS BLUFF COUNTY, NEBRASKA

LEGEND
EXISTING SW REBAR, OR AS NOTED
SET OFF BY REBAR, OR AS NOTED
REBAR
REBAR
REBAR
REBAR
REBAR
NEW LOT BOUNDARY LINE

1 2 3 4 5 6 7

Scale in Feet
0 20 40



NOTES

1. All easements, setbacks and other documents that may affect these platted lots are not shown on this plat.
2. A typical lot is 20' wide & 90' deep, with open facing normally 8' x 10', except for Lot 1A, which has a space of 8' x 12'.
3. New lots 1A-17 adjusted from found jobs to get dimensions shown.

LOTS 1A, 100A, 100B, 135A, 135B, 136A, 136B, 178A, 178B, PART OF 179, 179A, 179B, PART OF 224, AND 224A, OF SECTION A, THIRD ADDITION TO FAIRVIEW CEMETERY, A REPLAT OF VACATED LOTS 95-99, AND LAND IN SECTION A, THIRD ADDITION TO FAIRVIEW CEMETERY, AN ADDITION TO THE CITY OF SCOTTSBLUFF, SCOTTS BLUFF COUNTY, NEBRASKA SHEET 2 OF 3

SURVEYOR'S CERTIFICATE

RE REPLAT OF

I, Kelly A. Beatty, a Nebraska Registered Land Surveyor, hereby certify that I have surveyed and prepared a plat of LOTS 1A, 100A, 100B, 135A, 135B, 136A, 178A, 178B, PART OF 179, 179A, 179B, PART OF 224, AND 224A, OF SECTION A, THIRD ADDITION TO FAIRVIEW CEMETERY, A REPLAT OF VACATED LOTS 95-99, AND LAND IN SECTION A, THIRD ADDITION TO FAIRVIEW CEMETERY, an addition to the City of Scottsbluff, Scotts Bluff County, Nebraska situated in the Northwest Quarter of Section 13, Township 22 North, Range 55 West of the 6th P. M., Scotts Bluff County, Nebraska.

That the accompanying plat is a true delineation of such survey drawn to a scale of 20 feet to the inch. That all dimensions are in feet and decimals. That each lot and space has its own number and that the boundary of the plat is shown with a heavy solid line with dashed lines being for orientation purposes only. That all corners found or set are marked as shown.

WITNESS MY HAND AND SEAL THIS 20th DAY OF August, 2012.
FOR THE FIRM OF M. C. SCHAFF AND ASSOCIATES, INC.

[Handwritten Signature]

Kelly A. Beatty, Nebraska Registered Land Surveyor, L. S. 476



OWNERS STATEMENT

The undersigned, being the owner of that part of the Northwest Quarter of Section 13, Township 22 North, Range 55 West of the 6th P.M., in Section A, Third Addition, Fairview Cemetery, an addition to the City of Scottsbluff, Scotts Bluff County, Nebraska, as described in the foregoing 'Surveyor's Certificate' and shown on the accompanying plat have caused such real estate to be platted as LOTS 1A, 100A, 100B, 135A, 135B, 136A, 178A, 178B, PART OF 179, 179A, 179B, PART OF 224, AND 224A, OF SECTION A, THIRD ADDITION TO FAIRVIEW CEMETERY, A REPLAT OF VACATED LOTS 95-99, AND LAND IN SECTION A, THIRD ADDITION TO FAIRVIEW CEMETERY, AN ADDITION TO THE CITY OF SCOTTSBLUFF, SCOTTS BLUFF COUNTY, NEBRASKA.

Right of
2012

That the above described and foregoing plat of LOTS 1A, 100A, 100B, 135A, 135B, 136A, 178A, 178B, PART OF 179, 179A, 179B, PART OF 224, AND 224A, OF SECTION A, THIRD ADDITION TO FAIRVIEW CEMETERY, A REPLAT OF VACATED LOTS 95-99, AND LAND IN SECTION A, THIRD ADDITION TO FAIRVIEW CEMETERY, AN ADDITION TO THE CITY OF SCOTTSBLUFF, SCOTTS BLUFF COUNTY, NEBRASKA is made with the free consent and in accordance with the desires of the undersigned owner.

Dated this 17th day of September, 2012.

Owner:
City of Scottsbluff, Nebraska

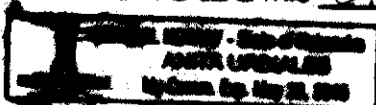
[Handwritten Signature]
By: Randy Meininger
Mayor

ACKNOWLEDGEMENT

STATE OF NEBRASKA)
COUNTY OF SCOTTS BLUFF)

Before me, a Notary Public, qualified and acting in said County, personally came Randy Meininger, Mayor of the City of Scottsbluff, Nebraska, known to be the identical person whose signature is affixed to the foregoing 'State of Ownership' and acknowledged the execution thereof to be his voluntary act and deed, and the voluntary act and deed of the City of Scottsbluff.

WITNESS MY HAND AND SEAL THIS 21st DAY OF September, 2012.



[Handwritten Signature]
Notary Public

My Commission Expires 5-28-15

LOTS 1A, 100A, 100B, 136A, 136B,
136A, 178A, 178B, PART OF 178, 178A,
178B, PART OF 224, AND 224A, OF
SECTION A, THIRD ADDITION TO
FAIRVIEW CEMETERY
SCOTTSBUFF, NEBRASKA
SHEET 3 OF 3

*✓ Pastor **

APPROVAL AND ACCEPTANCE

The foregoing plat of LOTS 1A, 100A, 100B, 136A, 136B, 136A, 178A, 178B, PART OF 178, 178A, 178B, PART OF 224, AND 224A, OF SECTION A, THIRD ADDITION TO FAIRVIEW CEMETERY, A REPLAT OF VACATED LOTS 95-99, AND LAND IN SECTION A, THIRD ADDITION TO FAIRVIEW CEMETERY, AN ADDITION TO THE CITY OF SCOTTSBUFF, SCOTTSBUFF COUNTY, NEBRASKA, is hereby approved by the Mayor and City Council of the City of Scottsbluff, Nebraska by resolution duly passed this 17th day of September, 2012.

[Signature]
Mayor, Nancy Hildegar

ATTEST:

[Signature]
City Clerk

