



2012-3486

NUM INDEX
COMPUTER
PICTURED
IMAGED

RECORDED
SCOTTS BLUFF COUNTY, NE

Date 6-26-12 Time 1:27pm

Inst 2012 3486

Jean A. Bauer

REGISTER OF DEEDS

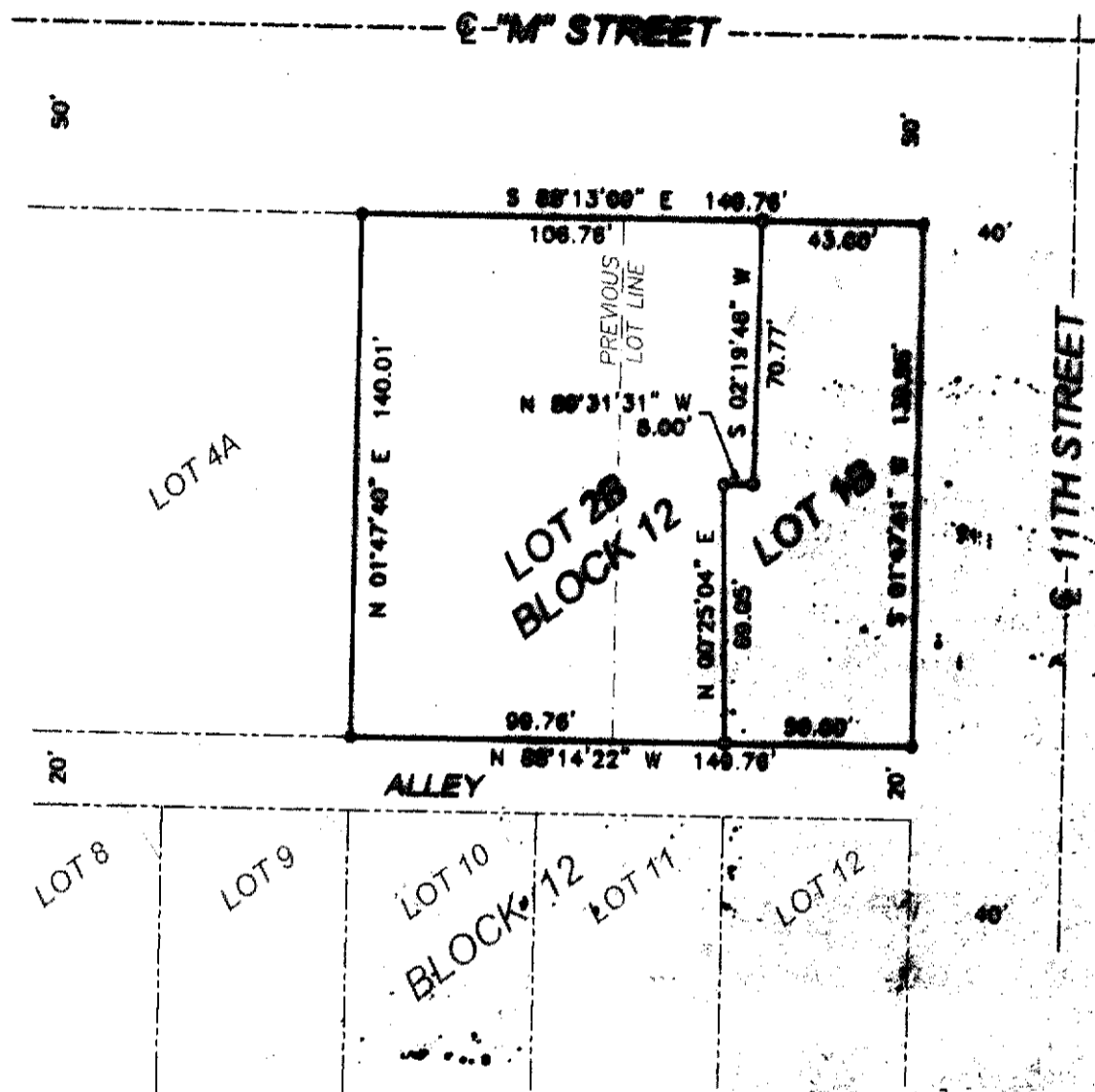
NUM PAGES 3
DCC TAX PD CHG RET
FEES 17.00 PD CHG RET
TOTAL 17.00
REC'D Scott Bosse
RET

gr

THIS PAGE INCLUDED FOR INDEXING PURPOSES

FINAL PLAT

LOTS 1B AND 2B, BLOCK 12, ORIGINAL TOWN, A REPLAT OF LOTS 1A AND 2A, BLOCK 12, ORIGINAL TOWN, A REPLAT OF LOTS 1, 2, AND 3, BLOCK 12, ORIGINAL TOWN TO THE CITY OF GERING, SCOTTS BLUFF COUNTY, NEBRASKA.



SCALE 1"=50'

LEGEND

- - CORNER RECONSTRUCTED
- - CORNER ESTABLISHED
- 5/8" x 3/8" REBAR WITH PVC CAP

SURVEYOR'S CERTIFICATE:

I, SCOTT M. BOSSE, NEBRASKA REGISTERED LAND SURVEYOR NUMBER 603, DO HEREBY CERTIFY THAT I HAVE SURVEYED AND PREPARED A PLAT OF LOTS 1B AND 2B, BLOCK 12, ORIGINAL TOWN, A REPLAT OF LOTS 1A AND 2A, BLOCK 12, ORIGINAL TOWN, A REPLAT OF LOTS 1, 2, AND 3, BLOCK 12, ORIGINAL TOWN TO THE CITY OF GERING, SCOTTS BLUFF COUNTY, NEBRASKA.

THAT THE ACCOMPANYING DRAWING IS A CORRECT DELINEATION OF SAID SURVEY DRAWN TO A SCALE OF 50 FEET TO THE INCH; THAT SAID SURVEY AND DRAWING WAS CONDUCTED BY ME OR UNDER MY DIRECT SUPERVISION; THAT THE DISTANCES ARE GROUND DISTANCES GIVEN IN FEET AND DECIMALS OF A FOOT; AND THE MONUMENTS WERE FOUND OR SET AS INDICATED AND THE BOUNDARY IS DEPICTED BY A THICKENED SOLID LINE.

WITNESS MY HAND AND SEAL this 13th day of January, 2011.

[Signature]
Scott M. Bosse
NEBRASKA REGISTERED LAND SURVEYOR NUMBER 603



SHEET
1 OF 2

PROJECT:
LOTS 1B & 2B, BLOCK 12 O.T.
LEE SCHNEIDERKOPF
GERING, NEBRASKA

ACCUSTAR SURVEYING
2004 COUNTY ROAD 17
MITCHELL, NE 68307
PHONE: (308) 623-0197
CELL: (308) 631-0737

Scale 1"=50'
Date JANUARY 16, 2011
Sheet No. 002
Revised:

FINAL PLAT

LOTS 1B AND 2B, BLOCK 12, ORIGINAL TOWN, A REPLAT OF LOTS 1A AND 2A, BLOCK 12, ORIGINAL TOWN, A REPLAT OF LOTS 1, 2, AND 3, BLOCK 12, ORIGINAL TOWN TO THE CITY OF GERING, SCOTTS BLUFF COUNTY, NEBRASKA.

OWNER'S STATEMENT

WE, THE UNDERSIGNED, BEING THE OWNERS OF LOTS 1A AND 2A, BLOCK 12, ORIGINAL TOWN, A REPLAT OF LOTS 1, 2, AND 3 BLOCK 12, ORIGINAL TOWN TO THE CITY OF GERING, SCOTTS BLUFF COUNTY, NEBRASKA, AS SHOWN ON THE ACCOMPANYING PLAT HAVE CAUSED SUCH REAL ESTATE TO BE PLATTED AS LOTS 1B AND 2B, BLOCK 12, ORIGINAL TOWN, A REPLAT OF LOTS 1A AND 2A, BLOCK 12, ORIGINAL TOWN, A REPLAT OF LOTS 1, 2, AND 3, BLOCK 12, ORIGINAL TOWN TO THE CITY OF GERING, SCOTTS BLUFF COUNTY, NEBRASKA.

DATED THIS 20TH DAY OF JAN, 2011.


LERROY W. SCHWARTZKOPF


CAROL E. SCHWARTZKOPF

ACKNOWLEDGMENT

STATE OF NEBRASKA)
COUNTY OF SCOTTS BLUFF)

BEFORE ME, A NOTARY PUBLIC, QUALIFIED AND ACTING IN SAID COUNTY, PERSONALLY CAME LEROY W. SCHWARTZKOPF AND CAROL E. SCHWARTZKOPF, HUSBAND AND WIFE, TO ME KNOWN TO BE THE IDENTICAL PERSONS WHOSE SIGNATURES ARE AFFIXED TO THE FOREGOING "OWNER'S STATEMENT" AND ACKNOWLEDGED THE EXECUTION THEREOF TO BE THEIR VOLUNTARY ACT AND DEED.

WITNESS MY NOTORIAL SEAL THIS 20TH DAY OF JAN, 2011.



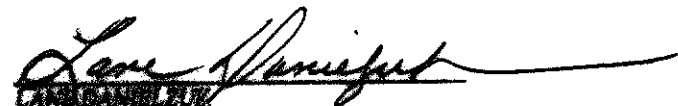

NOTARY PUBLIC

MY COMMISSION EXPIRES:



APPROVAL

THE FOREGOING PLAT OF LOTS 1B AND 2B, BLOCK 12, ORIGINAL TOWN, A REPLAT OF LOTS 1A AND 2A, BLOCK 12, ORIGINAL TOWN, A REPLAT OF LOTS 1, 2, AND 3, BLOCK 12, ORIGINAL TOWN TO THE CITY OF GERING, SCOTTS BLUFF COUNTY, NEBRASKA, WAS APPROVED BY THE CITY ADMINISTRATOR AND CITY ENGINEER OF THE CITY OF GERING, NEBRASKA, PURSUANT TO SECTION 19-916, REISSUE OF REVISED STATUTES OF NEBRASKA, AS AMENDED BY SECTION 16 OF L.B. 71, APPROVED MARCH 5, 1983, AND AMENDMENT TO ARTICLE 21, SECTION 21.307 BY ORDINANCE NO. 1517 TO THE CITY OF GERING, NEBRASKA.


LANE DANIELET
CITY ADMINISTRATOR


BRIAN R. SWEENEY
CITY ENGINEER