



2011-2492

NUM INDEX A
COMPUTER CA
PICTURED 2/1
IMAGED _____

RECORDED
SCOTTS BLUFF COUNTY, NE

NUM PAGES 3
DOC TAX PD CHG RET
FEES 16.50 PD CHG ✓ RET
TOTAL 16.50
REC'D Kelly Beatty - M.S. Schaff
RET _____

Date 5-19-11 Time 4:00pm
Inst. 2011 2492
Jean A. Bauer

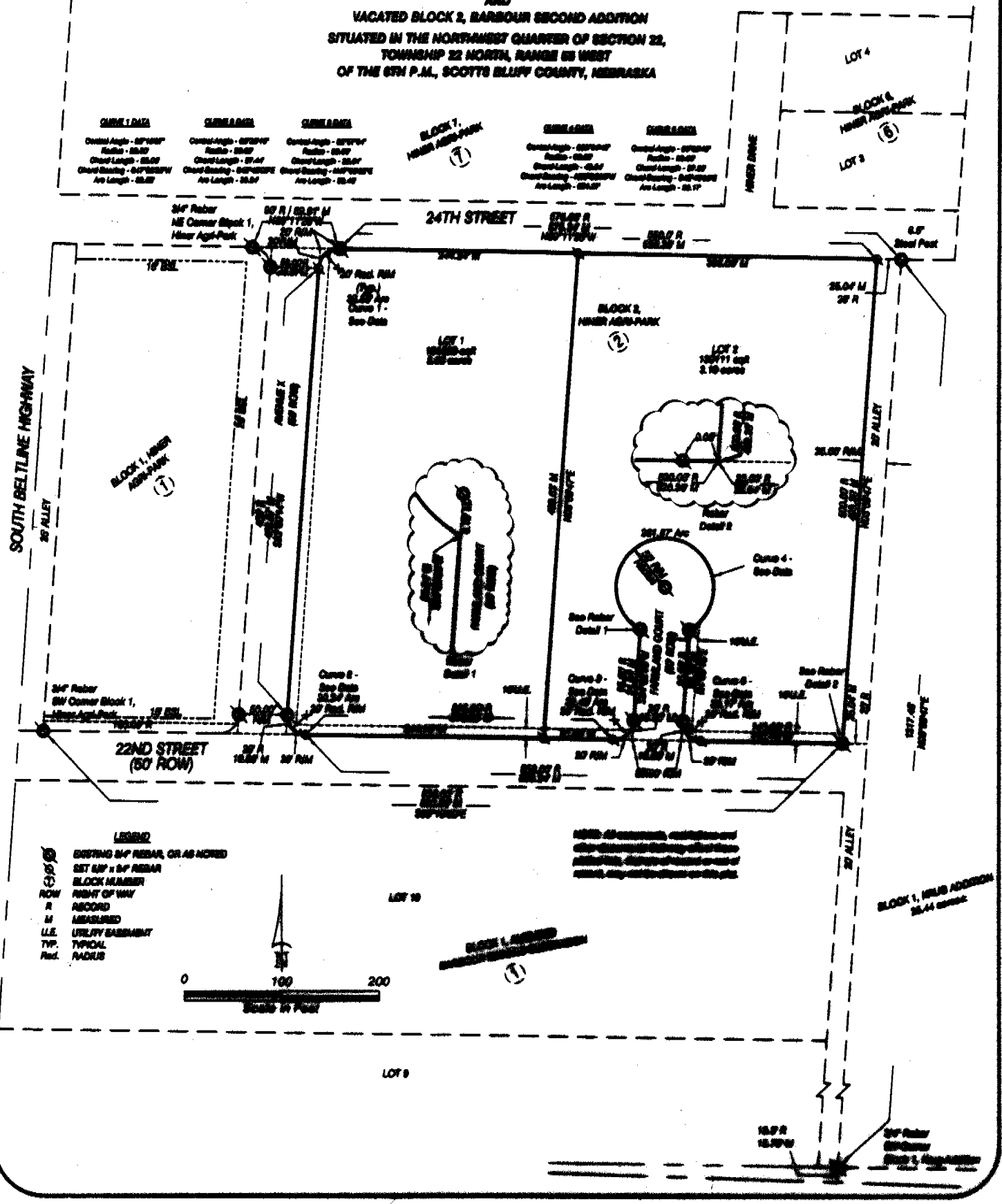
REGISTER OF DEEDS

FINAL PLAT

LOTS 1 AND 2, BLOCK 2, HINER AGRI-PARK SUBDIVISION

A REPLAT OF BLOCK 2, HINER AGRI-PARK,
A REPLAT OF PART VACATED 22ND STREET
AND
VACATED BLOCK 2, BARBOUR SECOND ADDITION
SITUATED IN THE NORTHWEST QUARTER OF SECTION 22,
TOWNSHIP 22 NORTH, RANGE 85 WEST
OF THE 6TH P.M., SCOTTS BLUFF COUNTY, NEBRASKA

CHISEL DATA	CHISEL DATA	CHISEL DATA	BLOCK 1, HINER AGRI-PARK	CHISEL DATA	CHISEL DATA
Circle Angle - 87°00'00" Radius - 25.00' Chord Length - 50.00' Chord Bearing - 87°00'00"W Arc Length - 25.00'	Circle Angle - 87°00'00" Radius - 25.00' Chord Length - 50.00' Chord Bearing - 87°00'00"W Arc Length - 25.00'	Circle Angle - 87°00'00" Radius - 25.00' Chord Length - 50.00' Chord Bearing - 87°00'00"W Arc Length - 25.00'	①	Circle Angle - 87°00'00" Radius - 25.00' Chord Length - 50.00' Chord Bearing - 87°00'00"W Arc Length - 25.00'	Circle Angle - 87°00'00" Radius - 25.00' Chord Length - 50.00' Chord Bearing - 87°00'00"W Arc Length - 25.00'



LOTS 1 AND 2, BLOCK 2,
HINER AGRI-PARK SUBDIVISION,
A REPLAT OF BLOCK 2,
HINER AGRI-PARK,
A REPLAT OF PART VACATED 22ND
STREET, AND VACATED BLOCK 2,
BARBOUR SECOND ADDITION
SCOTTS BLUFF COUNTY, NEBRASKA
SHEET 2 OF 3

SURVEYOR'S CERTIFICATE

I, Kelly A. Beatty, a Nebraska Registered Land Surveyor, hereby certify that I have surveyed and prepared a plat of LOTS 1 AND 2, BLOCK 2, HINER AGRI-PARK SUBDIVISION, A REPLAT OF BLOCK 2, HINER AGRI-PARK, A REPLAT OF PART VACATED 22ND STREET, AND VACATED BLOCK 2, BARBOUR SECOND ADDITION, situated in the Northwest Quarter of Section 22, Township 22 North, Range 55 West of the 6th P.M., Scotts Bluff County, Nebraska.

That the accompanying plat is a true delineation of such survey drawn to a scale of 100 feet to the inch. That all dimensions are in feet and decimals. That each lot and block has its own number and that the boundary of the plat is shown with a heavy solid line with dashed lines being for orientation purposes only. That all corners found or set are marked as shown.

WITNESS MY HAND AND SEAL THIS 25th DAY OF March, 2011.
FOR THE FIRM OF M. C. SCHAFF AND ASSOCIATES, INC.

Kelly A. Beatty

Kelly A. Beatty, Nebraska Registered Land Surveyor, L. S. 476



OWNER'S STATEMENT

We, the undersigned, being the owner of that land as described in the foregoing 'Surveyor's Certificate' and shown on the accompanying plat have caused such real estate to be platted as LOTS 1 AND 2, BLOCK 2, HINER AGRI-PARK SUBDIVISION, A REPLAT OF BLOCK 2, HINER AGRI-PARK, A REPLAT OF PART VACATED 22ND STREET, AND VACATED BLOCK 2, BARBOUR SECOND ADDITION, SITUATED IN THE NORTHWEST QUARTER OF SECTION 22, TOWNSHIP 22 NORTH, RANGE 55 WEST OF THE 6TH P.M., SCOTTS BLUFF COUNTY, NEBRASKA.

That the foregoing plat is made with the free consent and in accordance with the desires of the undersigned owners.
Dated this 25th day of March, 2011.

Owner:

Donald A. Krug

By: Donald A. Krug, a single person

LOTS 1 AND 2, BLOCK 2,
HINER AGRI-PARK SUBDIVISION,
A REPLAT OF BLOCK 2,
HINER AGRI-PARK,
A REPLAT OF PART VACATED 22ND
STREET, AND VACATED BLOCK 2,
BARBOUR SECOND ADDITION
SCOTTS BLUFF COUNTY, NEBRASKA
SHEET 3 OF 3

ACKNOWLEDGEMENT

STATE OF NEBRASKA)
COUNTY OF SCOTTS BLUFF)

Before me, a Notary Public, qualified and acting in said County, personally came Donald A. Krug, a single person to me known to be the identical person whose signature is affixed to the foregoing 'Owner's Statement' and acknowledged the execution thereof to be his voluntary act and deed.

WITNESS MY HAND AND SEAL THIS 25th DAY OF March, 2011.



Wally L. Gault
Notary Public

My Commission Expires 12/17/2014

APPROVAL AND ACCEPTANCE

The foregoing plat of LOTS 1 AND 2, BLOCK 2, HINER AGRI-PARK SUBDIVISION, A REPLAT OF BLOCK 2, HINER AGRI-PARK, A REPLAT OF PART VACATED 22ND STREET, AND VACATED BLOCK 2, BARBOUR SECOND ADDITION, situated in the Northwest Quarter of Section 22, Township 22 North, Range 65 West of the 6th P.M., Scotts Bluff County, Nebraska, is hereby approved by the Scotts Bluff County Board of Commissioners, by resolution duly passed this 16th day of May, 2011.

Mayor: *Randy Meisinger*
Randy Meisinger

ATTEST:

Arnette C. Dickinson
City Clerk

