



2010-4602

NUM INDEX J C
COMPUTER EA
PICTURED C
IMAGED _____

RECORDED
SCOTTS BLUFF COUNTY, NE

Date 9-9-10 Time 1:31pm

Inst. 2010 4602

Jean A. Bauer

REGISTER OF DEEDS

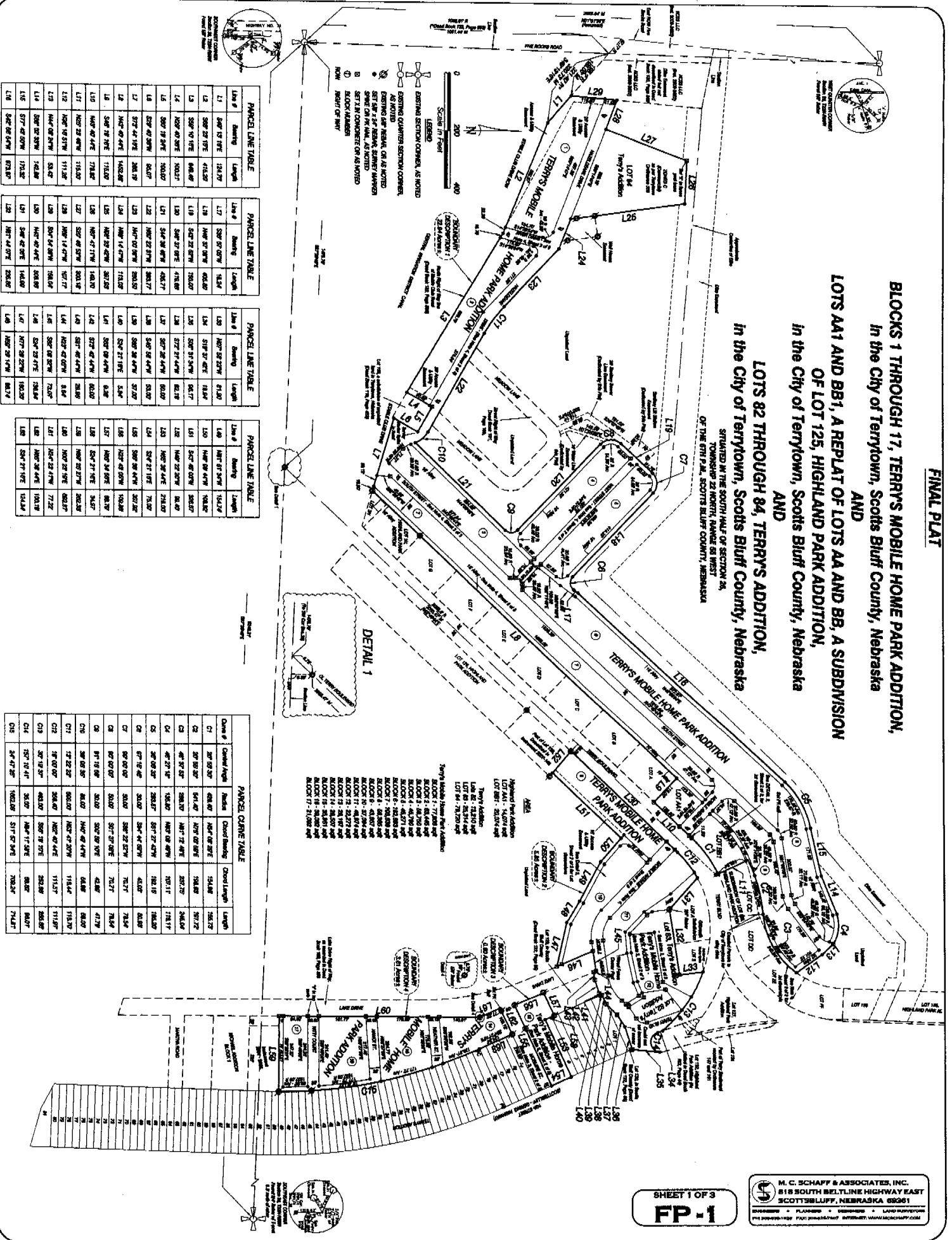
NUM PAGES 4
DOC TAX _____ PD _____ CHG _____ RET _____
FEES 32.50 PD _____ CHG RET _____
TOTAL 32.50
REC'D M.C. Schaff
RET _____

*RW
6A
6B*

THIS PAGE INCLUDED FOR INDEXING PURPOSES

FINAL PLAT

**BLOCKS 1 THROUGH 17, TERRY'S MOBILE HOME PARK ADDITION,
 AND
 LOTS AA1 AND BB1, A REPLAT OF LOTS AA AND BB, A SUBDIVISION
 OF LOT 125, HIGHLAND PARK ADDITION,
 IN THE CITY OF TERRYTOWN, SCOTTS BLUFF COUNTY, NEBRASKA
 AND
 LOTS 82 THROUGH 84, TERRY'S ADDITION,
 SITUATED IN THE SOUTH HALF OF SECTION 26,
 TOWNSHIP 22 NORTH, RANGE 68 WEST
 OF THE 6TH P.M., SCOTTS BLUFF COUNTY, NEBRASKA**



PANEL LINE TABLE

Line #	Bearing	Length
L1	S89°15'19"E	124.79
L2	S89°22'19"E	474.29
L3	S89°40'19"E	648.49
L4	S89°40'19"E	1042.7
L5	S89°19'24"E	1642.07
L6	S89°09'24"E	2641.7
L7	S72°44'19"E	2641.7
L8	S42°49'44"E	1462.28
L9	S42°49'44"E	1162.28
L10	N49°47'14"E	778.82
L11	N49°23'49"E	1118.02
L12	N49°47'14"E	778.82
L13	N49°47'14"E	1462.28
L14	S89°40'19"E	1462.28
L15	S77°42'07"E	1752.32
L16	S42°49'44"E	678.87

PANEL LINE TABLE

Line #	Bearing	Length
L17	S39°37'07"E	163.54
L18	N49°23'49"E	405.42
L19	S42°22'07"E	782.02
L20	S42°22'07"E	1162.02
L21	S42°22'07"E	1162.02
L22	S42°22'07"E	1162.02
L23	N49°23'49"E	2641.7
L24	N49°14'47"E	1162.02
L25	N49°23'49"E	2641.7
L26	N49°23'49"E	2641.7
L27	N49°23'49"E	2641.7
L28	N49°23'49"E	2641.7
L29	N49°23'49"E	2641.7
L30	N49°23'49"E	2641.7
L31	N49°23'49"E	2641.7
L32	N49°23'49"E	2641.7
L33	N49°23'49"E	2641.7
L34	N49°23'49"E	2641.7
L35	N49°23'49"E	2641.7
L36	N49°23'49"E	2641.7
L37	N49°23'49"E	2641.7
L38	N49°23'49"E	2641.7
L39	N49°23'49"E	2641.7
L40	N49°23'49"E	2641.7
L41	N49°23'49"E	2641.7
L42	N49°23'49"E	2641.7
L43	N49°23'49"E	2641.7
L44	N49°23'49"E	2641.7
L45	N49°23'49"E	2641.7
L46	N49°23'49"E	2641.7
L47	N49°23'49"E	2641.7
L48	N49°23'49"E	2641.7
L49	N49°23'49"E	2641.7
L50	N49°23'49"E	2641.7

PANEL LINE TABLE

Line #	Bearing	Length
L51	S19°37'42"E	183.84
L52	S39°37'07"E	163.54
L53	S39°37'07"E	163.54
L54	S39°37'07"E	163.54
L55	S39°37'07"E	163.54
L56	S39°37'07"E	163.54
L57	S39°37'07"E	163.54
L58	S39°37'07"E	163.54
L59	S39°37'07"E	163.54
L60	S39°37'07"E	163.54
L61	S39°37'07"E	163.54
L62	S39°37'07"E	163.54
L63	S39°37'07"E	163.54
L64	S39°37'07"E	163.54
L65	S39°37'07"E	163.54
L66	S39°37'07"E	163.54
L67	S39°37'07"E	163.54
L68	S39°37'07"E	163.54
L69	S39°37'07"E	163.54
L70	S39°37'07"E	163.54
L71	S39°37'07"E	163.54
L72	S39°37'07"E	163.54
L73	S39°37'07"E	163.54
L74	S39°37'07"E	163.54
L75	S39°37'07"E	163.54
L76	S39°37'07"E	163.54
L77	S39°37'07"E	163.54
L78	S39°37'07"E	163.54
L79	S39°37'07"E	163.54
L80	S39°37'07"E	163.54

PANEL LINE TABLE

Line #	Bearing	Length
L81	S42°22'07"E	1162.02
L82	S42°22'07"E	1162.02
L83	S42°22'07"E	1162.02
L84	S42°22'07"E	1162.02
L85	S42°22'07"E	1162.02
L86	S42°22'07"E	1162.02
L87	S42°22'07"E	1162.02
L88	S42°22'07"E	1162.02
L89	S42°22'07"E	1162.02
L90	S42°22'07"E	1162.02
L91	S42°22'07"E	1162.02
L92	S42°22'07"E	1162.02
L93	S42°22'07"E	1162.02
L94	S42°22'07"E	1162.02
L95	S42°22'07"E	1162.02
L96	S42°22'07"E	1162.02
L97	S42°22'07"E	1162.02
L98	S42°22'07"E	1162.02
L99	S42°22'07"E	1162.02
L100	S42°22'07"E	1162.02

PANEL CURVE TABLE

Curve #	Chord Angle	Radius	Chord Bearing	Chord Length	Length
C1	39°37'07"	684.47	N49°09'24"E	154.86	782.02
C2	39°37'07"	684.47	N49°09'24"E	154.86	782.02
C3	48°37'07"	584.47	N49°09'24"E	154.86	782.02
C4	48°37'07"	584.47	N49°09'24"E	154.86	782.02
C5	48°37'07"	584.47	N49°09'24"E	154.86	782.02
C6	48°37'07"	584.47	N49°09'24"E	154.86	782.02
C7	48°37'07"	584.47	N49°09'24"E	154.86	782.02
C8	48°37'07"	584.47	N49°09'24"E	154.86	782.02
C9	48°37'07"	584.47	N49°09'24"E	154.86	782.02
C10	48°37'07"	584.47	N49°09'24"E	154.86	782.02
C11	48°37'07"	584.47	N49°09'24"E	154.86	782.02
C12	48°37'07"	584.47	N49°09'24"E	154.86	782.02
C13	48°37'07"	584.47	N49°09'24"E	154.86	782.02
C14	48°37'07"	584.47	N49°09'24"E	154.86	782.02
C15	48°37'07"	584.47	N49°09'24"E	154.86	782.02
C16	48°37'07"	584.47	N49°09'24"E	154.86	782.02
C17	48°37'07"	584.47	N49°09'24"E	154.86	782.02
C18	48°37'07"	584.47	N49°09'24"E	154.86	782.02

M. C. SCHAFF & ASSOCIATES, INC.
 818 SOUTH BELTLINE HIGHWAY EAST
 SCOTTSBLUFF, NEBRASKA 68361
 PLANNING • ENGINEERING • LAND SURVEYING
 TEL: 688-2211 FAX: 688-2212 INTERNET: WWW.MCSCHAFF.COM

SHEET 1 OF 3
FP-1

BLOCKS 1 - 17, TERRY'S MOBILE HOME PARK ADDITION, LOTS AA1 AND BB1, HIGHLAND PARK ADDITION, LOTS 82 - 84, TERRY'S ADDITION TERRYTOWN, NEBRASKA SHEET 2 OF 3
3 3

OWNER'S STATEMENT

We, the undersigned, being the owners of that land as described in the foregoing 'Surveyor's Certificate' and shown on the accompanying plat have caused such real estate to be platted as BLOCKS 1 THROUGH 17, TERRY'S MOBILE HOME PARK ADDITION, LOTS AA1 AND BB1, HIGHLAND PARK ADDITION, AND LOTS 82 THROUGH 84, TERRY'S ADDITION TO THE CITY OF TERRYTOWN, SCOTTS BLUFF COUNTY, NEBRASKA, situated in the south half of Section 26, Township 22 North, Range 55 West of the 6th P.M., Scotts Bluff County, Nebraska,

That the foregoing plat is made with the free consent and in accordance with the desires of the undersigned owners. We hereby dedicate the streets, alleys, access easements, and utility easements including those as referenced in the general notes that are shown on the final plat for the use and benefit of the public.

Dated this 7th day of May, 2009.

* A Replat of Lots AA and BB, A SUBDIVISION of LOT 125 KAS

Owner:
Terry Carpenter, Inc.

Janet Pierce
By: Janet Pierce, Secretary

ACKNOWLEDGMENT

STATE OF NEBRASKA;

COUNTY OF SCOTTS BLUFF;

Before me, a Notary Public, qualified and acting in said County, personally came Janet Pierce, secretary for Terry Carpenter, Inc, to me known to be the identical person whose signature is affixed to the foregoing 'Owner's Statement' and acknowledged the execution thereof to be her voluntary act and deed and the voluntary act and deed of Terry Carpenter, Inc.

WITNESS MY HAND AND SEAL THIS 7th DAY OF May, 2009.



Rosaura Lentes
Notary Public

My Commission Expires _____

APPROVAL AND ACCEPTANCE

The foregoing plat of BLOCKS 1 THROUGH 17, TERRY'S MOBILE HOME PARK ADDITION, LOTS AA1 AND BB1, HIGHLAND PARK ADDITION AND LOTS 82 THROUGH 84, TERRY'S ADDITION TO THE CITY OF TERRYTOWN, SCOTTS BLUFF COUNTY, NEBRASKA, is hereby approved by the Mayor and City Council of the City of Terrytown, Scotts Bluff County, Nebraska, by resolution duly passed this 5th day of August, 2009. 2010

Kent Greenwalt
Kent Greenwalt, Mayor

ATTEST:

Rosanne P. Miller
City Clerk