



2008-4997

NEPA PAGES 2  
DOG TAX  
FEES  
TOTAL  
REC'D  
FEE

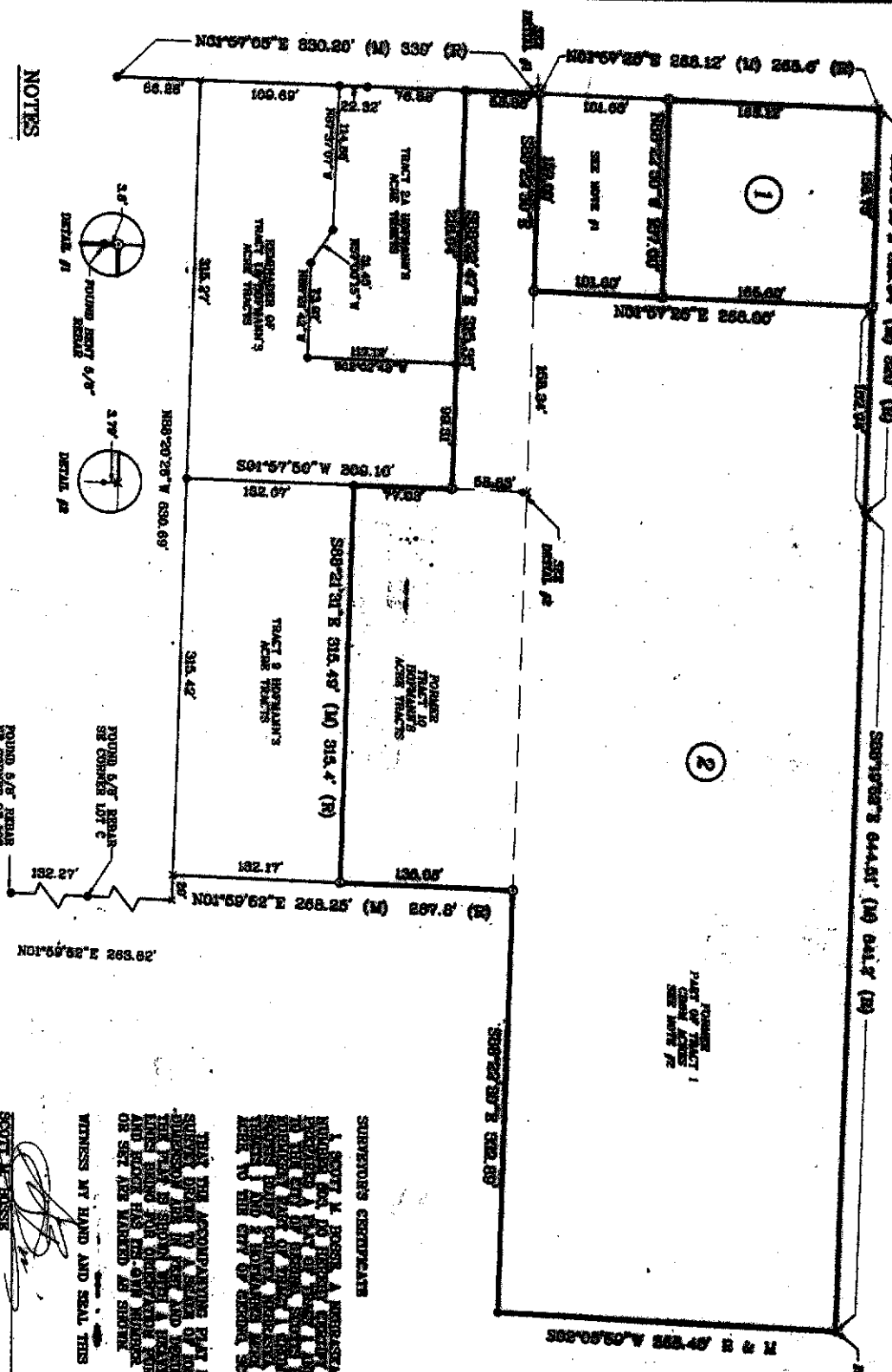
RECORDED  
REGISTERED  
INDEXED

# FINAL PLAT

## TRACTS 1 AND 2

### CERING GARDEN SUBDIVISION

A SUBDIVISION TO THE CITY OF CERRIL, SCOTTS BLUFF COUNTY, NEBRASKA  
PARTLY PART OF TRACT 1, SEW ASSES AS TRACT 11, PART  
OF TRACT 1 AND 2, NEBRASKA, AS SHOWN ON THE PLAT OF  
HOVANN'S ACRES TRACT TO THE CITY OF CERRIL, SCOTTS BLUFF  
COUNTY, NEBRASKA  
SITUATED IN THE SOUTH 21 1/4 OF THE SW 1/4 OF SEC. 2,  
TOWNSHIP 23 NORTH, RANGE 66 WEST, OF THE 6TH P.M.



#### NOTES

- #1 PART OF TRACT 1 CERRIL ACRES, AS ADDITION TO THE CITY OF CERRIL, SCOTTS BLUFF COUNTY, NEBRASKA, BOOK 2008 PAGE 901
- #2 PART OF TRACT 1 CERRIL ACRES, AS ADDITION TO THE CITY OF CERRIL, SCOTTS BLUFF COUNTY, NEBRASKA, BOOK 2008 PAGE 794



RECORDED  
SCOTTS BLUFF COUNTY, NE  
Date 9-12-08 Time 9:35am  
Inst. 2008 4997  
Jan A. Bauer  
REGISTER OF DEEDS

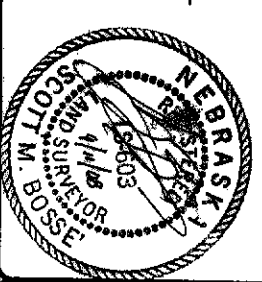
- 1. BEARING
- 2. BEARING
- 3. BEARING
- 4. BEARING
- 5. BEARING
- 6. BEARING
- 7. BEARING
- 8. BEARING
- 9. BEARING
- 10. BEARING

#### SUPERVISOR'S CERTIFICATE

I, SCOTT M. BOSSE, REGISTERED LAND SUPERVISOR, DO HEREBY CERTIFY THAT THE FOREGOING PLAT IS A TRUE REPRESENTATION OF SAID SURVEY AND THAT THE SAME IS IN ACCORDANCE WITH THE LAWS OF NEBRASKA AND THE CONSTITUTION OF THE UNITED STATES AND THAT THE SAME IS CORRECTLY PLATED AND RECORDED IN THE OFFICE OF THE REGISTER OF DEEDS FOR SCOTTS BLUFF COUNTY, NEBRASKA.

WITNESS MY HAND AND SEAL THIS 11<sup>th</sup> DAY OF September, 2008.

SCOTT M. BOSSE  
REGISTERED LAND SUPERVISOR #903



PROJCTOR TRACTS 1 AND 2 OF CERING GARDEN SUBDIVISION	CLIENT	Paul Reed Construction & Supply, Inc. 200 E. Center St. #2 CERRIL, NE 68801 Tel: 308-432-0225
Sheet 1 of 2		

